


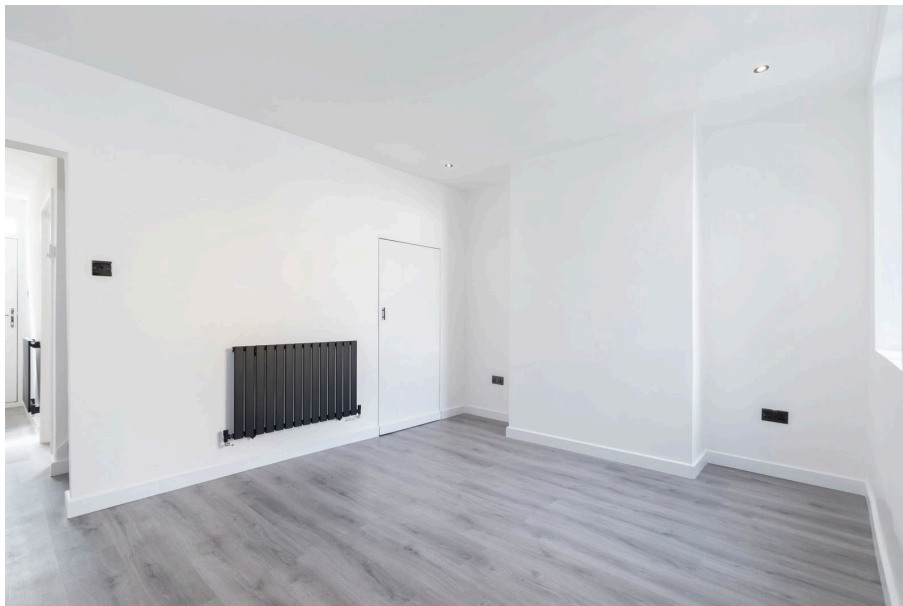




Magdala Road, Close To City Centre, Gloucester, GL1

£235,000

 3  1  2



- Three bedrooms
- Two reception rooms
- Recently renovated throughout
- Courtyard garden
- Close to city centre and local amenities
- Terraced property
- Modern kitchen
- Worcester Combination Boiler
- No Onward Chain





A modern kitchen with white cabinetry, dark grey countertops, and a large window. The kitchen features a sink with a chrome faucet, a built-in oven, and a wooden door in the background.

