





## Greenfields, New Barn Lane, Prestbury, Cheltenham, GL52

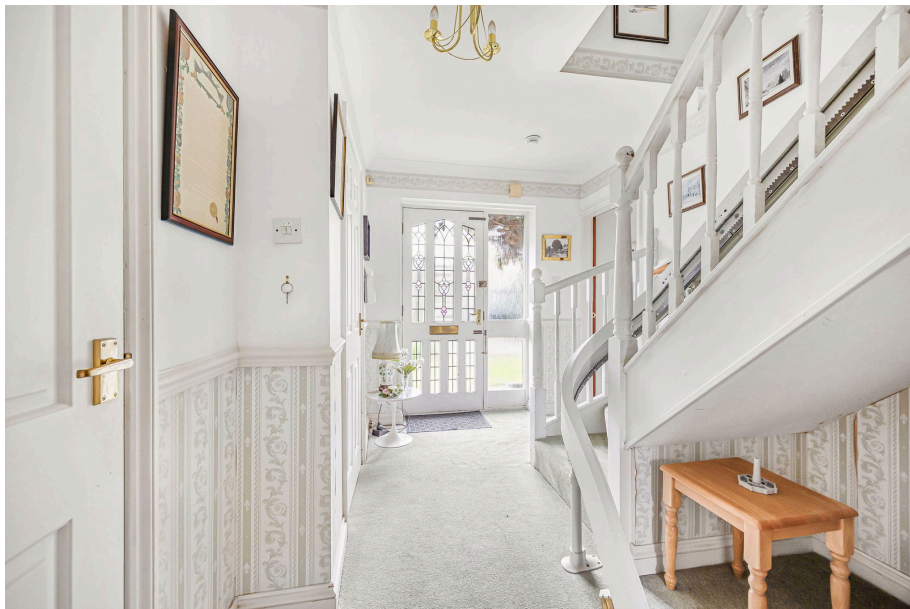
Offers Over £475,000

🛏 4 🚿 2 🛋 2



- Four Bedrooms
- Separate Dining Room
- Downstairs WC
- Close to Cheltenham Racecourse
- Garage & Driveway
- Kitchen & Utility Room
- Main Bedroom with En-Suite
- In Need of Modernisation







Situated near Cheltenham Racecourse, this four-bedroom detached home presents a fantastic opportunity for buyers looking to put their own stamp on a property. In need of modernisation, the home offers generous living space, practical features, and a desirable layout, making it an excellent project for those seeking to create their dream home.

