


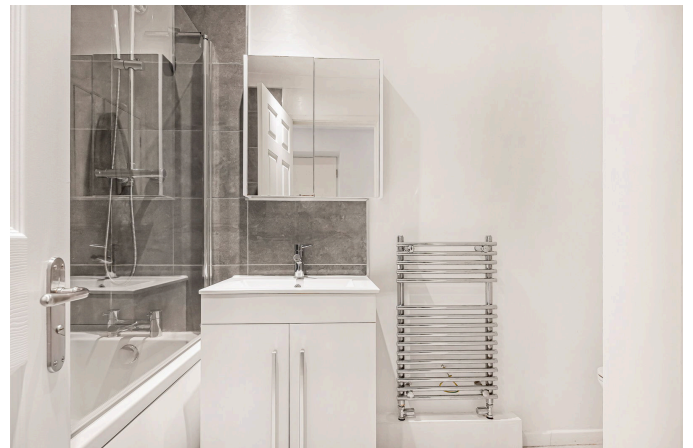


## Cameron House, Glencairn Park Road, Cheltenham, GL50

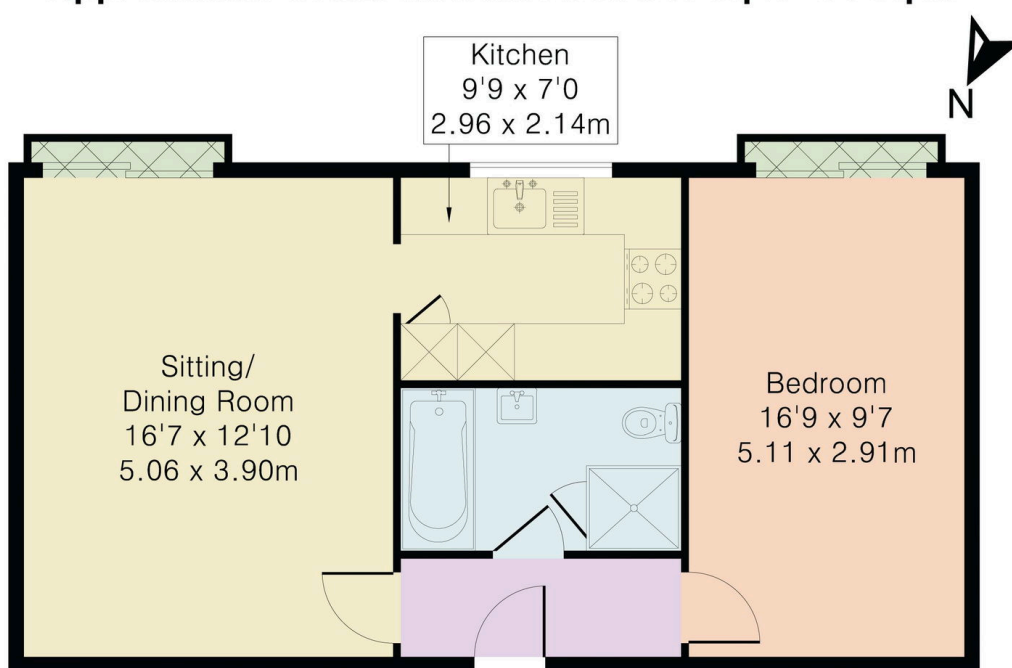
£187,500

 1 
  1 
  1



- One double bedroom apartment
- Spacious Lounge/Diner
- Modern Fitted Kitchen
- Stylish bathroom
- Security Door Entry System
- Short walk from Cheltenham Spa train station
- Gas Central Heating
- Double Glazing
- 
- 

**Approximate Gross Internal Area 541 sq ft - 50 sq m**



Upper Ground Floor

This beautifully presented and generously proportioned one-bedroom apartment is situated on the sought-after Glencairn Park Road, within easy walking distance of Cheltenham Spa train station and local amenities. Offering modern living with a touch of elegance, this property is ideal for first-time buyers, professionals, or investors.