



Garden Flat, 7 Wellington Square, Cheltenham, GL50

£425,000

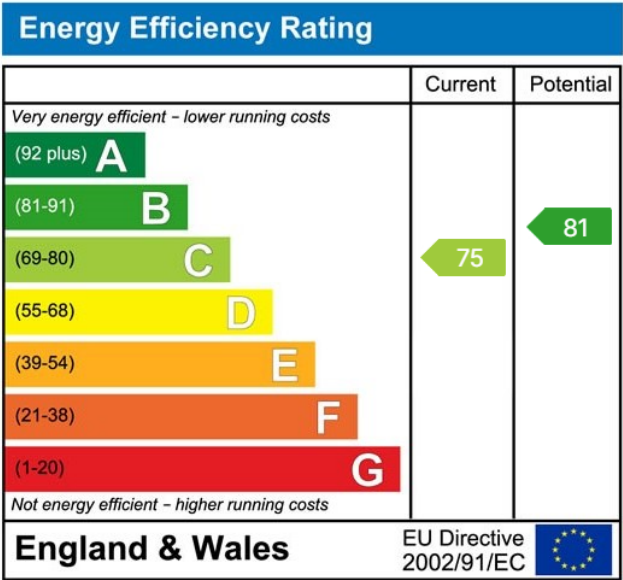
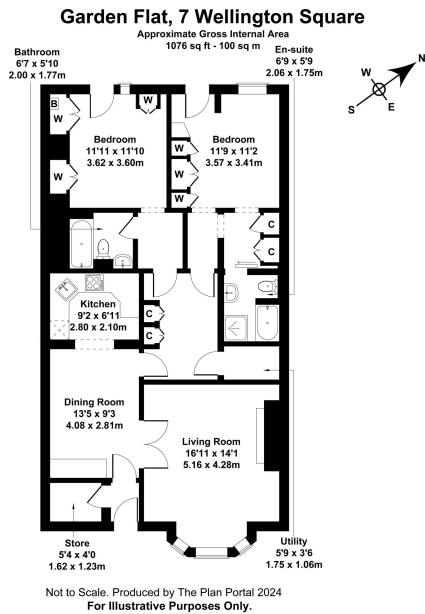
🛏 2 🍳 2 🛋 2



- Two Spacious Double Bedrooms
- Private Entrance
- Master Bedroom with En-Suite
- Private Rear Garden
- Grade II Listed Building
- Lounge with Bay Window and Wood-Burning Stove
- Convenient Inner Hallway Storage
- Close to Cheltenham Town Centre



This charming and spacious garden apartment, located within a Grade II listed building and just a short walk from Cheltenham town centre. This property boasts two generously sized double bedrooms and is accessed through a private entrance at the front of the building, offering both privacy and convenience.



Elliot Oliver Sales

101 Promenade, Cheltenham GL50 1NW
01242 321091
www.elliottoliver.co.uk

