



Wellington Square, Town Centre, Cheltenham, GL50

Offers Over £300,000

🛏️ 2 🚿 1 🛋️ 1

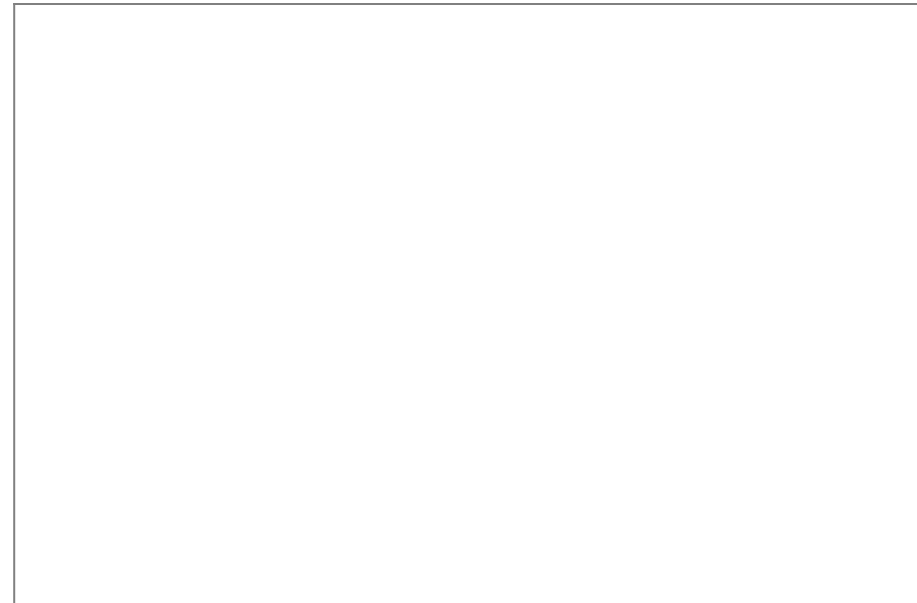
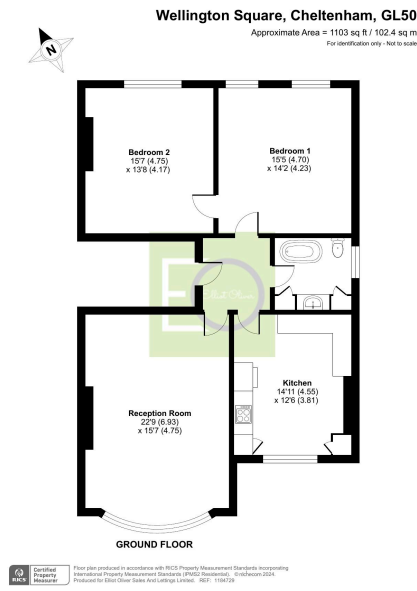


- First-floor Regency apartment
- Prime Wellington Square location
- Cast-iron radiators throughout
- Spacious kitchen with dining area
- Gas central heating included
- 2 double bedrooms
- Dual sash windows in living room
- Feature fireplaces in living areas
- Modern bathroom with slipper bath
- Permit parking available



This elegant 2 bedroom first-floor Regency apartment is situated in a semi-detached period property in the highly sought-after Wellington Square, Cheltenham. Offering a perfect blend of character and modern conveniences, the apartment retains many of its original features, including ornate coving, ceiling roses, cast-iron radiators, and feature fireplaces. Ideal for buyers seeking a home with history, charm, and a prestigious location, this apartment is the epitome of Cheltenham’s renowned Regency architecture.

Wellington Square is a prime location within walking distance of Cheltenham town centre. Its peaceful, tree-lined streets are home to stunning Regency houses, and the square offers a tranquil setting with green spaces and easy access to local amenities. The location provides the best of both worlds: a serene, residential environment combined with the convenience of town living.



Elliot Oliver Sales
 101 Promenade, Cheltenham GL50 1NW
 01242 321091
 www.elliottoliver.co.uk

