



Nortenham Close, Bishops Cleeve, Cheltenham, GL52

£465,000

🛏️ 4 🪑 2 🚿 1



Welcome to this exceptional four-bedroom detached family home, located in the tranquil setting of Nortenhams Close, Bishop Cleeve. This well-planned corner plot residence boasts a prime Hitchins-built structure, making it an ideal choice for families seeking a spacious and versatile living environment.

As you enter the home, you'll discover a cozy lounge/family room situated at the front, providing a perfect spot for relaxation with loved ones.

The recently added rear extension enhances the property's light and space. The thoughtfully designed kitchen features modern fittings, generous counter space, and ample storage. Its open-plan layout seamlessly connects to the dining area, creating a bright and airy atmosphere, while French doors lead you directly to the garden, allowing for a wonderful flow of natural light. A convenient utility room offers additional storage and a dedicated laundry space right off the kitchen.

For added convenience, the ground floor also includes a cloakroom.

The property showcases four generously sized bedrooms, providing ample space for the entire family. The main bedroom features a modern en-suite bathroom. The additional bedrooms are well-proportioned, making them perfect for children, guests, or even a home office.

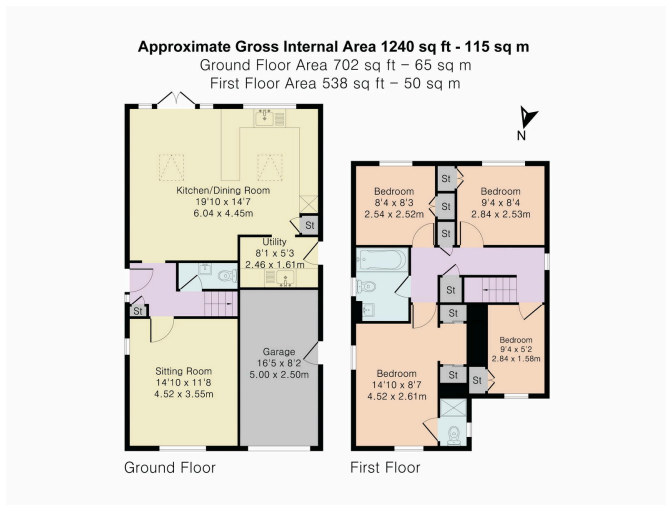
Upstairs, along with the bedrooms, you'll find a contemporary family bathroom designed for comfort and practicality for everyone.

At the rear, the home boasts a lovely south-facing garden that's ideal for outdoor living enthusiasts. This sun-drenched space is perfect for summer barbecues, gardening, or simply unwinding in a private setting.

A garage offers secure parking or extra storage, while the private driveway accommodates multiple vehicles, ensuring hassle-free parking for you and your guests.

Situated in a peaceful, family-friendly cul-de-sac, this property strikes





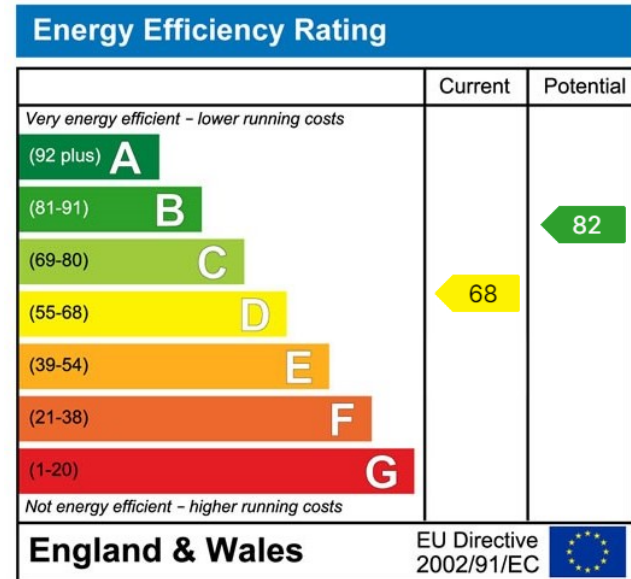
PINK PLAN

Although Pink Plan Ltd ensures the highest level of accuracy, measurements of floors, windows and rooms are approximate and no responsibility is taken for error, omission or misstatement. These plans are for representation purposes only as defined by RICS code of measuring practice. No guarantee is given on total square footage of the property within this plan. The figure shown is for initial guidance only and should not be relied on as a basis of valuation.

For more information visit www.pinkplan.co.uk



- Four-Bedroom Detached Home
- Lounge
- Garage and Driveway Parking
- South-Facing Garden
- Extended Kitchen/Dining Area
- Downstairs Cloakroom
- Main Bedroom with Ensuite
- Ample Storage Throughout
- Bishops Cleeve location
- Quiet, Family-Friendly Location



Elliott Oliver Sales
 101 Promenade, Cheltenham GL50 1NW
 01242 321091
www.elliottoliver.co.uk

