



Sir Charles Irving Close, The Park, Cheltenham, GL50

£235,000

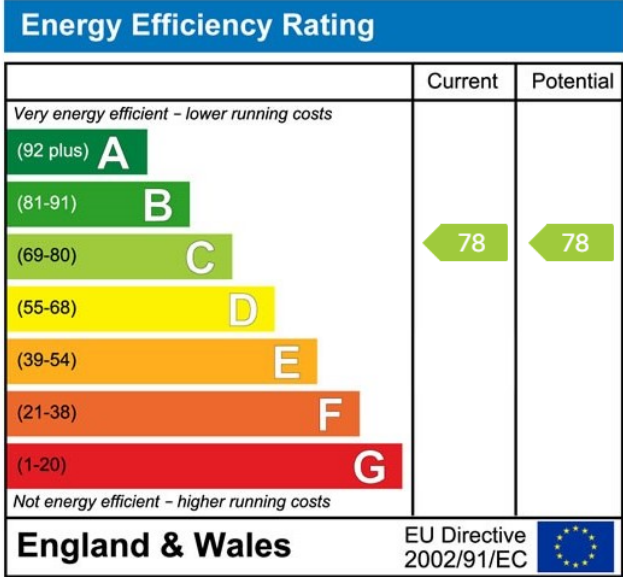
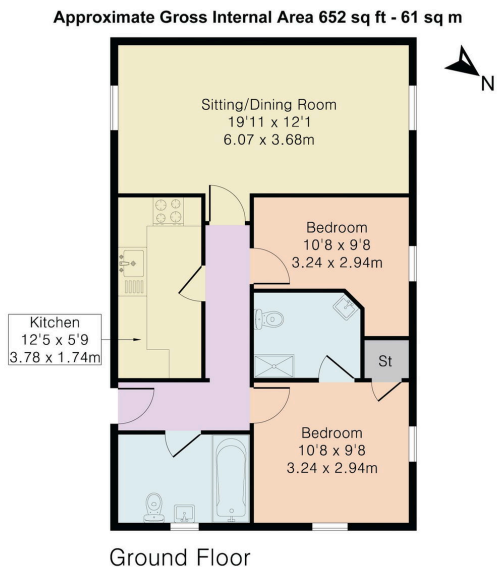
🛏️ 2 🪑 2 🛋️ 1



- Modern two-bedroom apartment
- Built in 2006
- Open plan living area
- En-suite master bedroom
- Prime location in The Park
- Ground floor convenience
- Allocated parking space
- Stylish fitted kitchen
- Main bathroom
- Ideal for urban living



This modern two-bedroom ground floor apartment, built in 2006, combines contemporary design with practical living solutions. With its open plan layout, stylish kitchen, en-suite master bedroom, and allocated parking space, this property is an ideal home for those seeking a quality living experience in one of the most popular areas.



Elliot Oliver Sales
 101 Promenade, Cheltenham GL50 1NW
 01242 321091
 www.elliottoliver.co.uk

