



Priory Street, Pittville, Cheltenham, GL52

£155,000

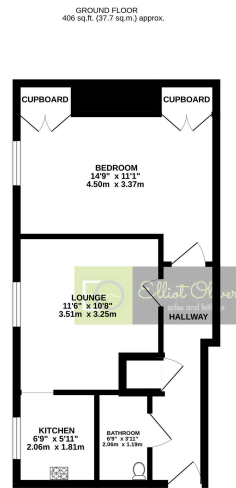
🛏 1 🚿 1 🚗 1



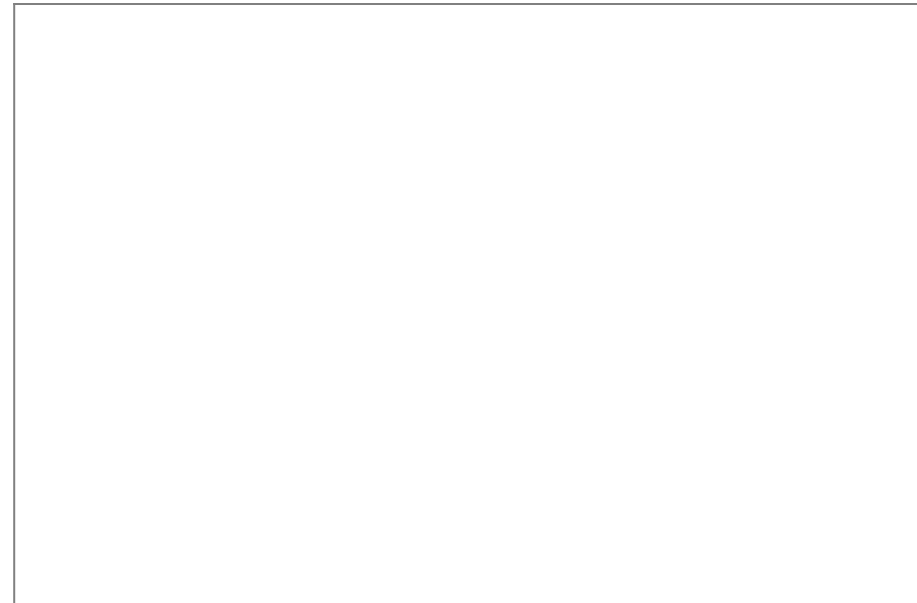
- No onward chain, ideal for first time buyers or investment.
- Share of freehold, 952-year lease.
- Council Tax Band A
- Modern kitchen with appliances space.
- Private entrance
- Permit parking available.
- Private courtyard and communal gardens.
- Double bedroom with built-in wardrobes
- Spacious living area



This charming one-bedroom lower ground floor Regency apartment, just a 5-minute walk from Cheltenham town centre, is ideal for first-time buyers or investors. It features a spacious living area, a modern kitchen, a double bedroom with built-in wardrobes, and a bathroom. The property offers access to communal gardens, and a private courtyard. With a share of freehold, 952 years remaining on the lease, and no onward chain, this well-located apartment is perfect for convenient urban living near shops, eateries, and transport links. Service charge: £90/month.



TOTAL FLOOR AREA: 406 sq.ft. (37.7 sq.m.) approx.
We have made every effort to ensure that the information contained in this advertisement is accurate and complete. However, we do not warrant the accuracy or completeness of the information. The information is provided for general information only and should not be relied upon for any specific purpose. Please contact us for more information.



Elliot Oliver Sales
 101 Promenade, Cheltenham GL50 1NW
 01242 321091
 www.elliottoliver.co.uk

