



# Meadow Lea, Bishops Cleeve, Cheltenham, GL52

£235,000

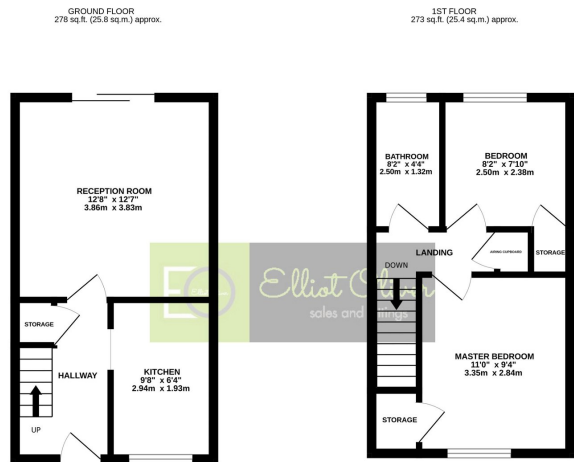
🛏️ 2 🍽️ 1 🚗 1



- Two Bedroom
- End-Terraced
- No Onward Chain
- Two Parking Spaces
- Lounge/Diner
- Village Location
- Well Presented Kitchen



This is a lovely two bedroom property situated in the village of Bishops Cleeve. This comes to the market with no onward chain and two parking spaces.



TOTAL FLOOR AREA: 551 sq.ft. (51.2 sq.m.) approx.  
Whilst every attempt has been made to ensure the accuracy of the description contained herein, measurement of areas, windows, rooms and any other items are approximate and no responsibility is taken for any error, omissions or any omissions. This plan is for guidance purposes only and should be used in conjunction with the prospective purchaser. The services, fixtures and fittings are shown for information only and are not guaranteed as to their quantity or efficiency can be given. Please see Energy CDR.

Energy Efficiency Rating		
	Current	Potential
Very energy efficient - lower running costs		
(92 plus) <b>A</b>		<b>90</b>
(81-91) <b>B</b>		
(69-80) <b>C</b>		
(55-68) <b>D</b>		
(39-54) <b>E</b>	<b>50</b>	
(21-38) <b>F</b>		
(1-20) <b>G</b>		
Not energy efficient - higher running costs		
<b>England &amp; Wales</b>	EU Directive 2002/91/EC	



Elliot Oliver Sales  
 101 Promenade, Cheltenham GL50 1NW  
 01242 321091  
 www.elliottoliver.co.uk

