



Wesley House, St. Georges Street, Cheltenham, GL50

£230,000

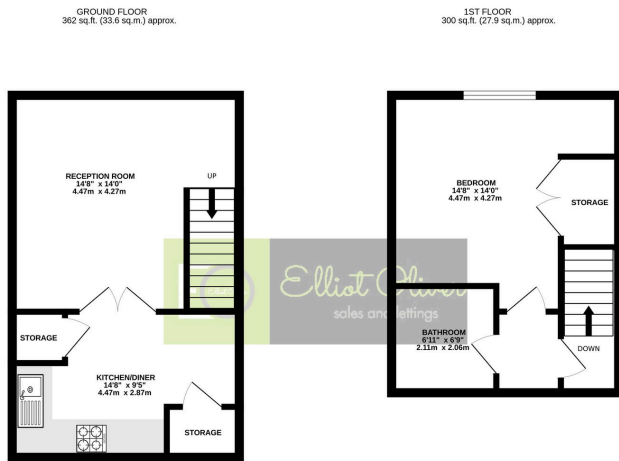
🛏️ 1 🚿 1 🚗 1



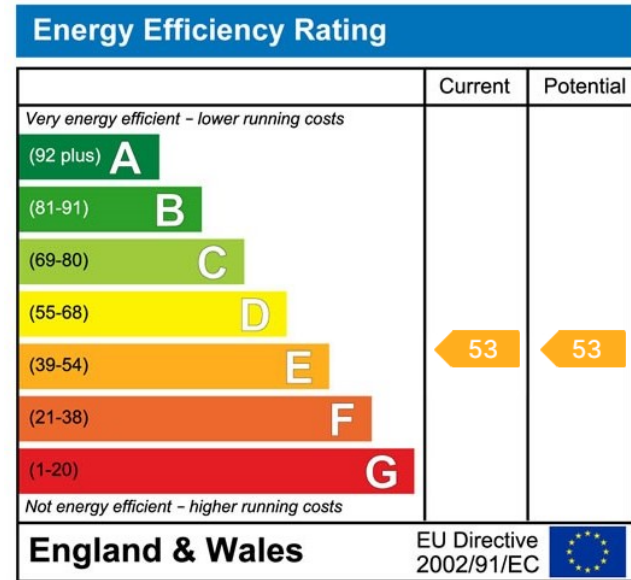
- One Bedroom
- Duplex Apartment
- Underground Parking Space
- Wonderful Kitchen
- Stylish Bathroom
- Close To The Brewery Quarter
- Walking Distance To The Town Centre
- Very Large Bedroom With Built-In Wardrobe



Set within a beautifully preserved Grade II listed building, this exquisite one-bedroom duplex flat seamlessly blends historic charm with contemporary living.



TOTAL FLOOR AREA: 682 sq.ft. (63.5 sq.m.) approx.
While every effort has been made to ensure the accuracy of the floorplan, the measurements of doors, windows, rooms and any other items are approximate and no responsibility is taken for any error, omission or other discrepancy. The plan is for guidance purposes only and should not be used for any purpose without the approval of the agent. The agent does not warrant the accuracy of the information provided and no guarantee is given as to the quantity or efficiency of any services or facilities.
 Made with MyPlan 2024



Elliot Oliver Sales
 101 Promenade, Cheltenham GL50 1NW
 01242 321091
 www.elliottoliver.co.uk

