



Middlehay Court, Bishops Cleeve, Cheltenham, GL52

£250,000

🛏️ 2 🪑 1 🚗 2



This is a very well presented two bedroom house built by Robert Hitchins and has the benefit of a west facing garden and two parking spaces. The downstairs accommodation consists of an entrance porch, well proportioned lounge/diner, a splendid re-fitted kitchen which offers a light and bright fittings and tile finish. Lastly downstairs there is a conservatory/dining room which being westerly facing would be a lovely summer room. Upstairs this home benefits from two double bedroom and a stylish re-fitted bathroom with three piece with shower over bath.

This house would be an ideal starter home or downsize alike. A must see house in the Bishops Cleeve village centre which offers a variety of amenities.

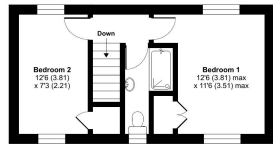
Freehold

Council Tax Band: C

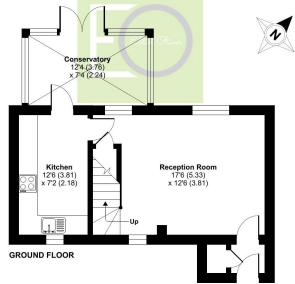


Middlehay Court, Bishops Cleeve, Cheltenham, GL52

Approximate Area = 763 sq ft / 70.8 sq m
For identification only - Not to scale



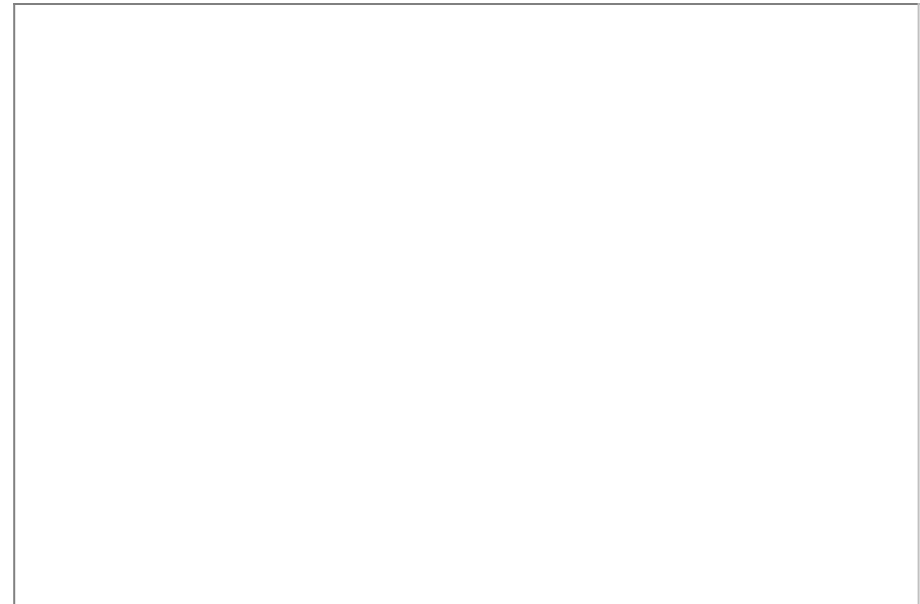
FIRST FLOOR



GROUND FLOOR

Floor plan produced in accordance with RICS Property Measurement Standards incorporating International Property Measurement Standards (IPMS) (London 2018).
Prepared for Elliot Oliver Sales and Lettings Limited. REF: 1102019

- Two Bedrooms
- Two Parking Spaces
- Re-Fitted Bathroom
- Conservatory
- Mid-Terraced
- Stunning Kitchen
- Gas Central Heating
- Walking Distance To The Village



Elliot Oliver Sales
101 Promenade, Cheltenham GL50 1NW
01242 321091
www.elliottoliver.co.uk

