



Wesley House, St. Georges Street, Cheltenham, GL50

£225,000

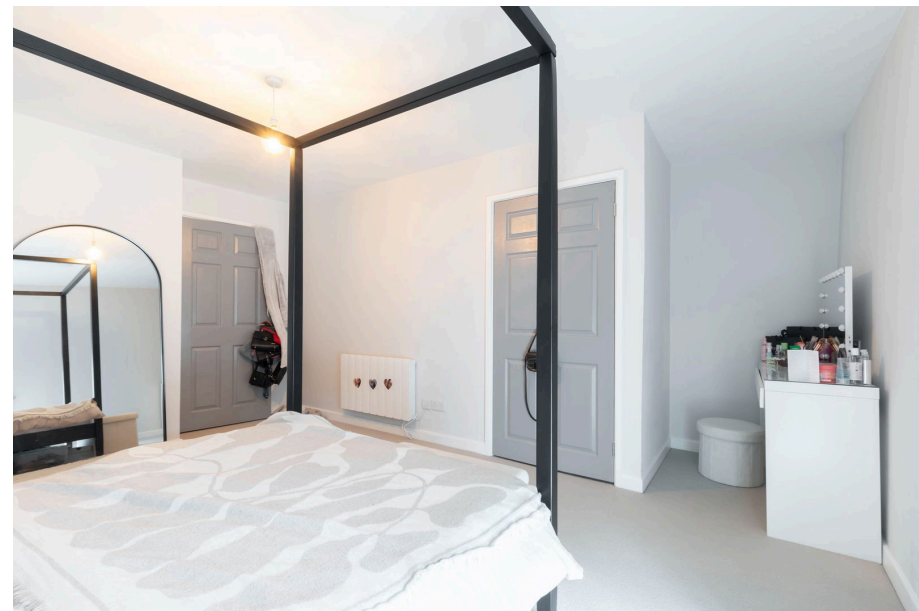
🛏 1 🚿 1 🚗 1



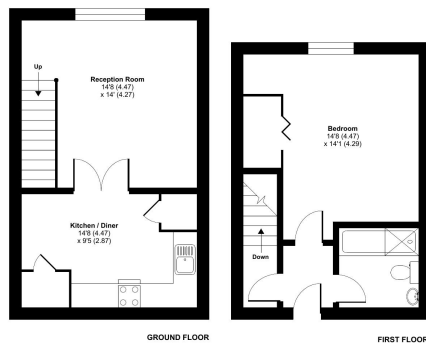
- One Spacious Double Bedroom Duplex Apartment
- Built-in Wardrobes in bedroom
- Modern, High Spec Kitchen
- Council Tax Band: A
- Elegant Communal area
- Beautifully presented throughout
- Allocated Parking Space



One outstanding double bed apartment in the centre of the Cheltenham Town and offers one allocated parking space.



Wesley House, St. Georges Street, Cheltenham, GL50
Approximate Area = 662 sq ft / 61.4 sq m
For identification only - Not to scale



Certified Property Measurement
Floor plan produced in accordance with RICS Property Measurement Standards incorporating International Property Measurement Standards (IPMS) Residential - 6th Edition 2022.
Produced for Countrywide Estate Agents - REF: 202206

