



Pas Seul Street, Pittville, Cheltenham, GL50

Offers Over £300,000

🛏️ 2 🪑 2 🚗 1



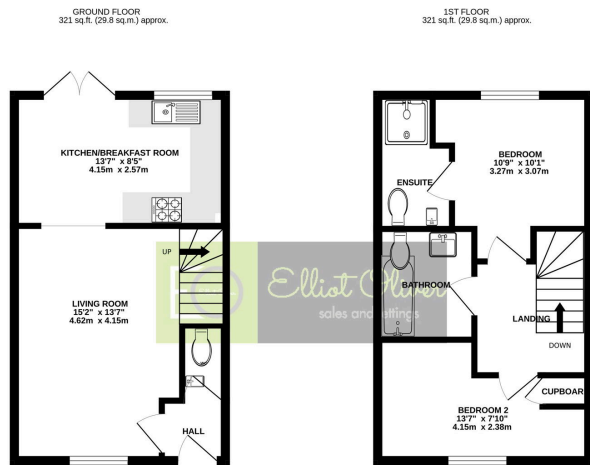
This is a stunning, two bedroom semi-detached property within walking distance to Pittville Park and the town centre.

The smart accommodation consists of an entrance hall, cloakroom, lounge area and a wonderful kitchen/diner to the rear. The kitchen itself comes with integrated appliances and room for a table facing the garden. Upstairs offers two double bedrooms, the main bedroom having an en-suite and upstairs is finished with a stylish family bathroom. The rear garden is mainly laid to lawn and would be a fantastic garden for a summer BBQ. Further benefits include off road parking, gas central heating and comes with an onward chain secured. A must view two bedroom house in a superb location.

Freehold

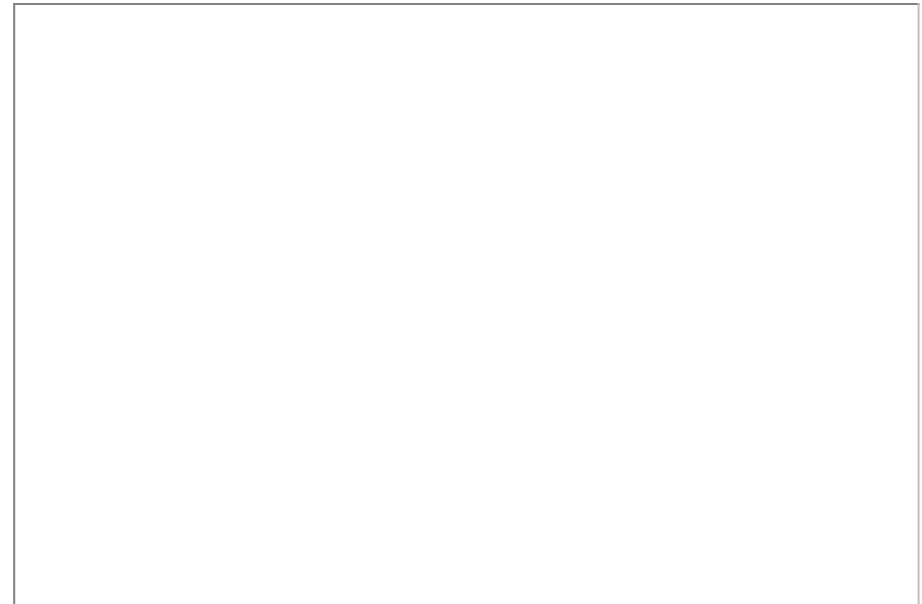
Council Tax Band: B





TOTAL FLOOR AREA: 642 sq.ft. (59.7 sq.m.) approx.
 Whilst every effort has been made to ensure the accuracy of the figures contained herein, measurements of areas, volumes, floors and any other items are approximate and no responsibility is taken for any error, omission or misstatement. This plan is for guidance purposes only and should not be used for any prospective purchase. The services, options and approvals shown here are not intended to be guaranteed as to their availability or efficiency can be given.
 Made with Housify ©2022

- Two Bedrooms
- Semi-Detached
- Allocated Parking Space
- Main Bedroom Offering An En-Suite
- Close To Pittville Park
- Bloor Built
- Modern Development
- Smart Kitchen
- Lovely Main Bathroom Suite



Elliot Oliver Sales
 101 Promenade, Cheltenham GL50 1NW
 01242 321091
 www.elliottoliver.co.uk

