



Prestbury Manor House, Southam Road, Prestbury, Cheltenham, GL52

Offers Over £300,000

🛏️ 2 🚿 2 🛋️ 1



- Two Bedrooms
- Lift In The Building
- Re-Fitted En-Suite
- Lots Of Parking
- Upper Floor Apartment
- Re-Fitted Kitchen
- Tennis Courts Of Site

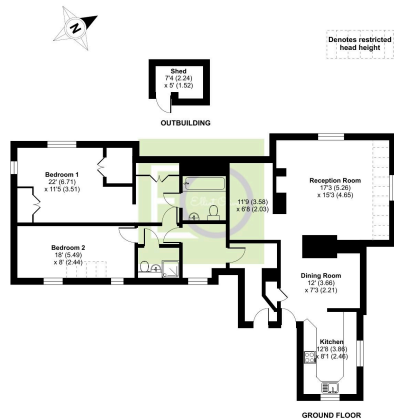


Apartment 9 Prestbury Manor House comprises a substantial upper floor apartment with many delightful views to the front of the property overlooking the communal gardens and grounds across to Cleeve Hill. The apartment itself offers over 1200 square feet of accommodation.

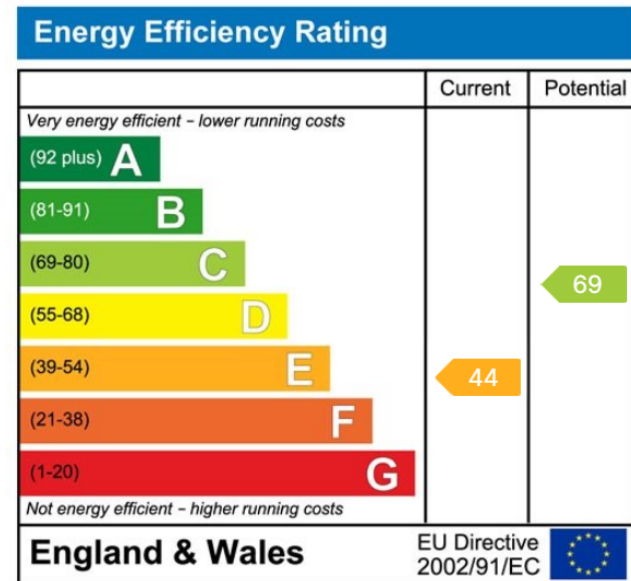


Southam Road, Prestbury, Cheltenham, GL52

Approximate Area = 1246 sq ft / 115.9 sq m
 Limited Use Area(s) = 52 sq ft / 4.8 sq m
 Outbuilding = 33 sq ft / 3.1 sq m
 Total = 1312 sq ft / 121.9 sq m
 For information only - Not to scale



Energy Performance Certificate
 This plan produced in accordance with RICS Property Measurement Standards incorporating International Property Measurement Standards (IPMS) Baseline, October 2023. Prepared for Elliot Oliver Sales and Lettings Limited. REF: 110226P



Elliot Oliver Sales
 101 Promenade, Cheltenham GL50 1NW
 01242 321091
 www.elliottoliver.co.uk

