



# Jubilee Mews, Andoversford, Cheltenham, GL54

Offers Over £385,000

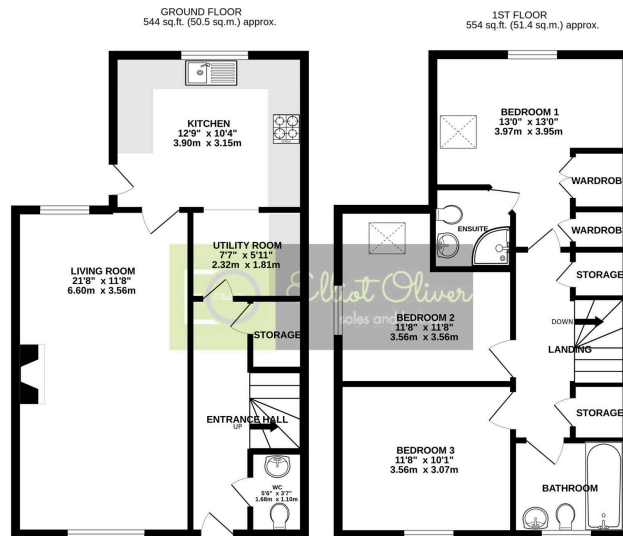
🛏️ 3 🚽 2 🛋️ 1



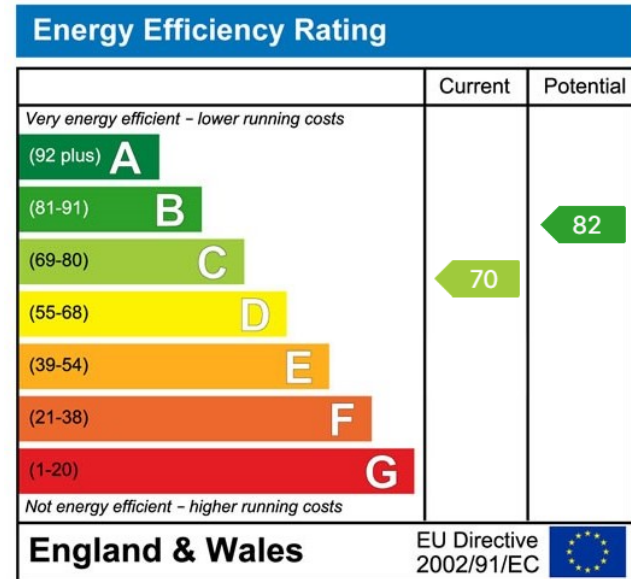
- Three Bedroom
- Modern Build
- En-Suite To Main Bedroom
- Off Road Parking
- Good Sized Rear Garden
- Semi-Detached
- Cul-De-Sac Location
- Stylish Bathroom
- Utility Room



A wonderful, spacious three bedroom semi-detached house set in a lovely cul-de-sac in the village of Andoversford.



TOTAL FLOOR AREA: 1097 sq ft. (101.9 sq.m.) approx.  
 While every attempt has been made to ensure the accuracy of the floorplan contained here, measurements of doors, windows, rooms and any other items are approximate and no responsibility is taken for any error, omission or mis-statement. This plan is for illustrative purposes only and should be used as such by any prospective purchaser. The services, systems and appliances shown have not been tested and no guarantee as to their operability or efficiency can be given.  
 Made with Metagen 02/22



Elliot Oliver Sales  
 101 Promenade, Cheltenham GL50 1NW  
 01242 321091  
 www.elliottoliver.co.uk

