



Upper Park Street, Town Centre, Cheltenham, GL52

£375,000

🛏️ 3 🚿 2 🚗 1



This is a splendid three bedroom period terraced house in a popular road on the Cheltenham and Charlton Kings fringes. It comes to the market with no onward chain.

The downstairs consists of an entrance hall which leads you into a very spacious lounge with a lovely log burner and room for ample living and dining furniture. The stunning kitchen/dining area at the rear offers a re-fitted kitchen with ample cupboard spaces and some integrated appliances. This then leads you into a wonderful downstairs bathroom and a separate cloakroom. Upstairs offers two double bedrooms, a shower room and lastly a single bedroom.

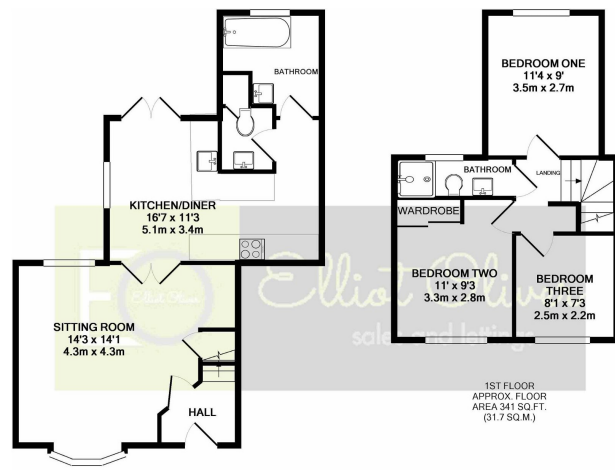
The outside offers a pretty rear garden and there is off road parking to the front which is very rare in this road specifically. A must view period property in a lovely area in Cheltenham.

Locally there is Sandford Park, the famous Lido and lastly just a 10 minute walk to John Lewis.

Freehold

Council Tax Band: C



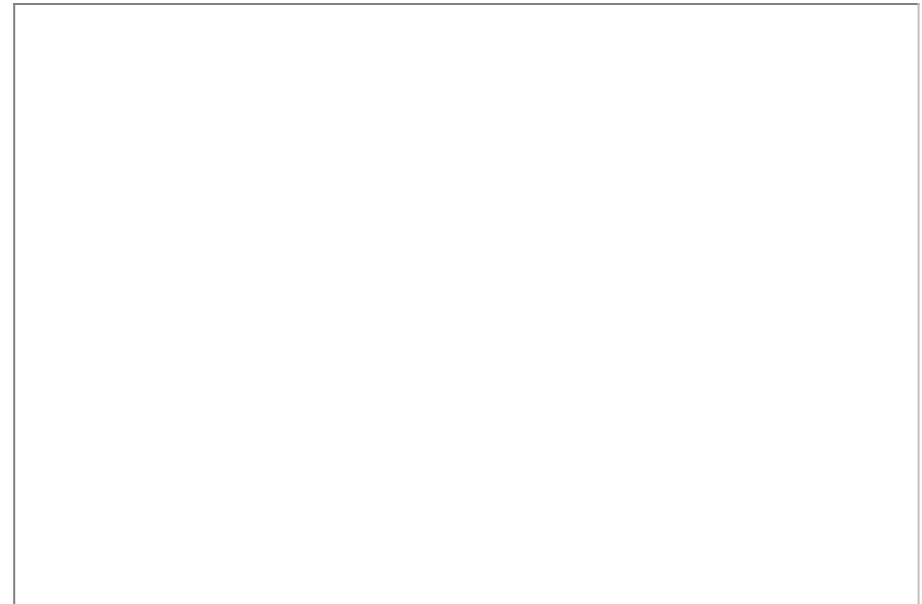


GROUND FLOOR
APPROX. FLOOR
AREA 498 SQ.FT.
(46.3 SQ.M.)

TOTAL APPROX. FLOOR AREA 839 SQ.FT. (78.0 SQ.M.)

Whilst every attempt has been made to ensure the accuracy of the floor plan contained here, measurements of doors, windows, rooms and any other items are approximate and no responsibility is taken for any error, omission, or mis-statement. This plan is for illustrative purposes only and should be used as such by any prospective purchaser. The services, systems and appliances shown have not been tested and no guarantee as to their operability or efficiency can be given.
Made with Metropix ©2018

- Three Bedroom
- Cheltenham
- Stylish Re-Fitted Bathroom Downstairs
- Two Double Bedrooms
- Off Road Parking Space
- Period Terraced House
- Wonderful Kitchen/Dining Room
- Shower Room Upstairs
- Pretty Rear Garden
- Walking Distance To The Town Centre



Elliot Oliver Sales
101 Promenade, Cheltenham GL50 1NW
01242 321091
www.elliottoliver.co.uk

