

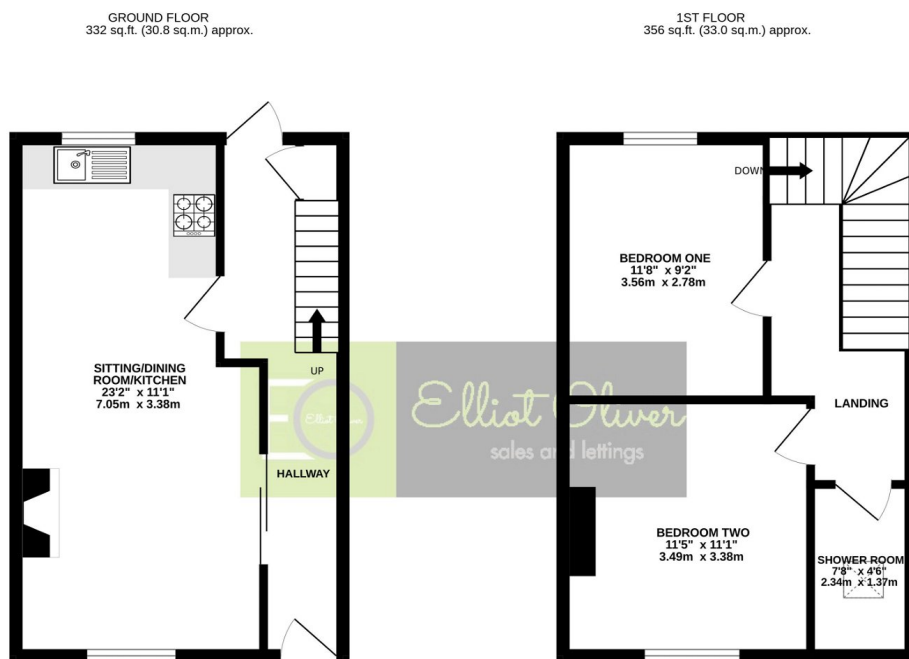
Princes Road, Cheltenham, GL50

Guide Price £425,000

🛏 2 🚿 1 🚺 1



- Located in the Desirable Area of Tivoli
- Two Double Bedrooms
- Gas Central Heating
- Log Burner
- Mid Terrace House
- Modern Fitted Kitchen with Marble Work Top
- Double Glazed
- Ideal Airbnb or Investment



TOTAL FLOOR AREA: 687 sq.ft. (63.9 sq.m.) approx.
Whilst every attempt has been made to ensure the accuracy of the floorplan contained here, measurements of floors, windows, rooms and any other items are approximate and no responsibility is taken for any error, omission or mis-statement. This plan is for illustrative purposes only and should be used as such by any prospective purchaser. The services, systems and appliances shown have not been tested and no guarantee as to their operability or efficiency can be given.
Made with Metropix ©2024

Nestled in the heart of Tivoli, Cheltenham, this charming two-bedroom Victorian terrace house beautifully marries historical elegance with modern comfort. Offering an idyllic retreat from the bustle of daily life, this home stands as a testament to timeless architectural design and thoughtful renovation, ensuring it remains a desirable residence for contemporary living.