



The Priory, Lansdown Road, Cheltenham, GL51

Offers Over £600,000

🛏️ 4 🚿 2 🚗 1



This is a truly remarkable first floor apartment in the wonderful leafy suburb of Lansdown, Cheltenham. At 1262 square feet and with plenty of different rooms this would be very easily adaptable to suit the new buyer's needs. As soon as you walk into this apartment you get a sense of size and character with the living areas consisting of a beautiful re-fitted kitchen with integrated appliances and ample room for a table. This area blends beautifully into the living room which being south facing has an array of natural sunlight and offers a feature fireplace. The apartment offers four bedrooms or an opportunity to have one as a study and still have the three bedrooms for guests or family members. The principal bedroom offers an en-suite shower room. The excellent bathroom comprises of a luxury three-piece suite and a tiled finish.

The communal gardens are well maintained to the rear of the apartment. Overall, a must-see large apartment in Cheltenham.

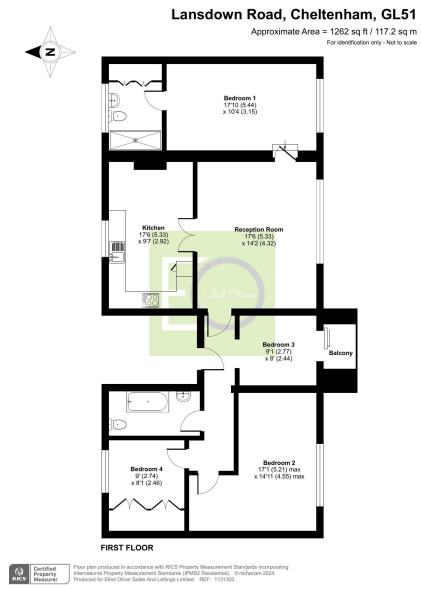
Located on the Lansdown Road, The Priory is a beautiful Grade II Listed building. Cheltenham is famed as one of the most complete Regency towns in England and historically the original and most fashionable spa. Less than a hundred miles from London it nestles beautifully between the Cotswold Hills and the Wye Valley, and is home to numerous prestigious schools including Cheltenham College, Cheltenham Ladies College, Dean Close and Pates Grammar which recently topped the national GCSE schools league table. Now a highly sought after place to live, the town is well known for its grand houses set amongst formal avenues and beautiful garden squares.

Share of Freehold

Number of years: The current lease is being extended.

Service Charges: £110 Per Month





- Four Bedrooms
- Grade Two Listed Building
- En-Suite To Main Bedroom
- Stylish Re-Fitted Kitchen
- Stunning Bathroom Suite
- First Floor Flat
- Two Allocated Parking Spaces
- Period Features Throughout
- Walking Distance To The Town Centre
- Balcony

