



Furrow Close, Prestbury, Cheltenham, GL52

£475,000

3 2 1



A remarkable three storey end terraced family home located in the desirable Prestbury area. This house was built by Bloor Homes as part of the Prestbury Chase development and is immaculate throughout.

The ground floor of this property comprises of entrance hall, living room with log burner and storage space, attractive open plan kitchen /diner with integrated appliances and French doors leading to rear garden, just off the kitchen is utility space and WC. To the first floor are two double bedrooms both with storage and family bathroom with separate shower cubicle. The third floor leads to the impressive main bedroom with dressing area and built in wardrobes, the master bedroom also leads to the en-suite shower room.

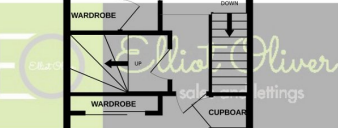
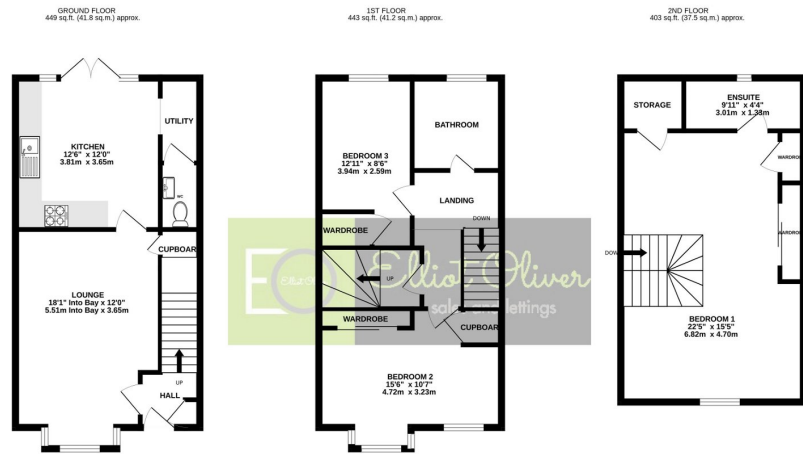
Outside the property has two allocated parking spaces and rear garden laid with lawn, patio area and gated access.

The property further benefits from gas central heating, double glazing and offers great links to Cheltenham Town Centre and is within walking distance to Prestbury Park and Pittville Park.

Freehold

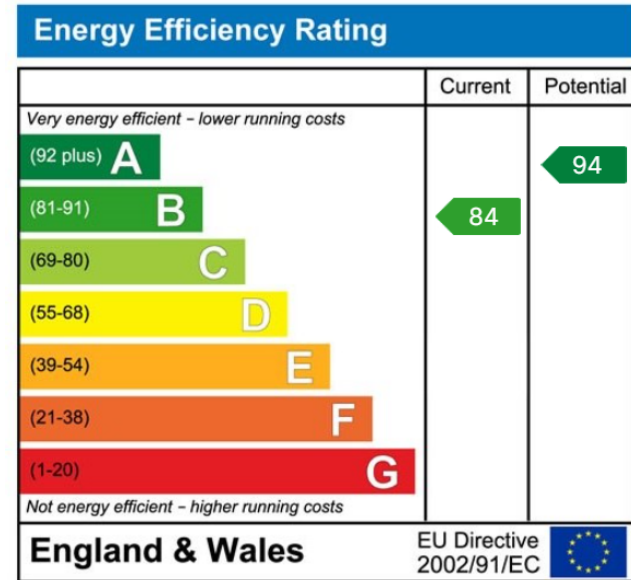
Council Tax Band: D





TOTAL FLOOR AREA : 1331sq.ft. (123.7 sq.m.) approx.
While every attempt has been made to ensure the accuracy of the floorplan contained here, measurements of doors, windows, rooms and any other items are approximate and no responsibility is taken for any error, omission or mis-statement. This plan is for illustrative purposes only and should be used as such by any prospective purchaser. The services, systems and appliances shown have not been tested and no guarantee as to their operability or efficiency can be given.
 Made with Metropix 2020

- Three bedrooms
- Stylish Kitchen
- Downstairs WC
- Off Road Parking
- Close To Prestbury Village
- Townhouse
- Utility Area
- South Facing Garden
- Principle Suite Across The Whole Of The Top Floor



Elliot Oliver Sales
 101 Promenade, Cheltenham GL50 1NW
 01242 321091
 www.elliottoliver.co.uk

