



Marquis House, Brookbank Close, Cheltenham, GL50
Offers Over £190,000

🛏️ 2 🍽️ 1 🚗 1



Beautifully presented and conveniently located, this stunning first-floor apartment offers an exceptional opportunity for modern living and is perfect for a professional couple or first time buyer seeking a stylish and comfortable home.

This apartment has spacious accommodation throughout, comprising an entrance hallway with storage cupboard, and an open plan living/kitchen/dining room with double doors that open onto the Juliet balcony.

The kitchen has a range of contemporary style wall and base units, integrated appliances including a stainless steel double oven, gas hob, extractor hood, fridge/freezer and dishwasher, with plumbing space for a washing machine.

There are two large double bedrooms, with one including wardrobe storage space. A large family bathroom that is partially tiled and is complete with shower over bath, wash basin and WC.

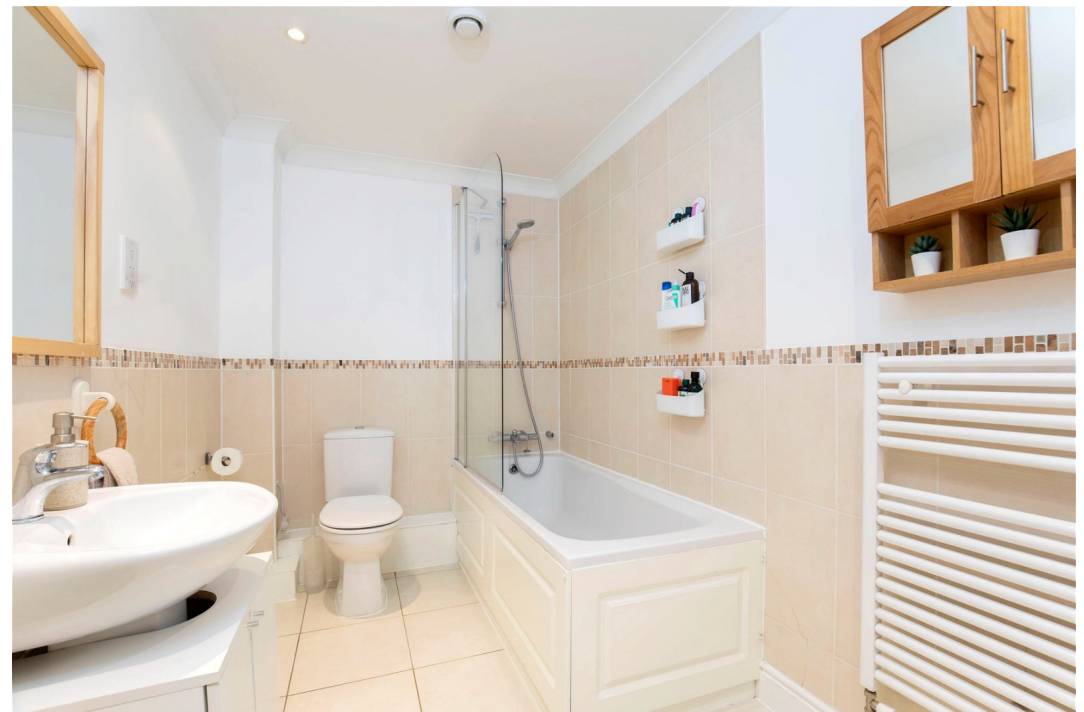
The property benefits from an allocated parking space and a large communal garden.

Leasehold

Years left on lease: 978 years

Ground rent: £125 per annum

Service Charge: £1668.78 per annum

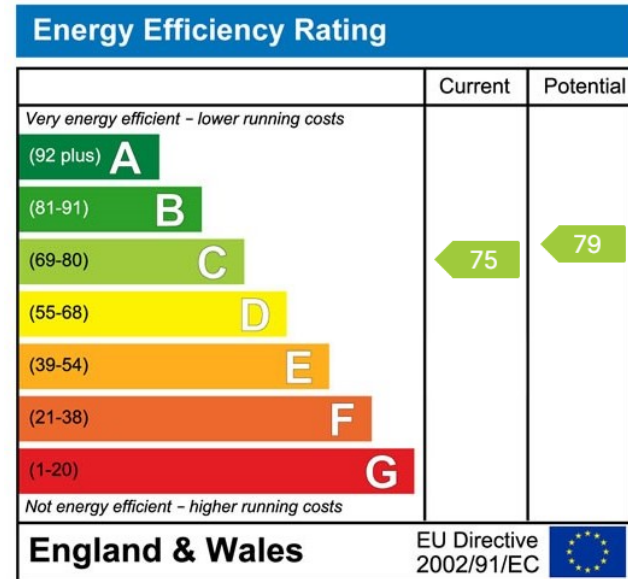


FIRST FLOOR
610 sq.ft. (56.7 sq.m.) approx.



MARQUIS HOUSE
TOTAL FLOOR AREA: 610 sq.ft. (56.7 sq.m.) approx.
While every effort has been made to ensure the accuracy of the brochure content here, representations of detail, materials, fixtures and fittings are not guaranteed and are subject to change without notice. The services, systems and appliances shown have not been tested and no guarantee is given. See also separate information on the property.

- Two double bedrooms
- Open plan kitchen/living/dining area
- Sunny west facing Juliet balcony
- Allocated parking space
- Council Tax Band: B
- First floor apartment
- Large bathroom suite with shower over bath
- Beautiful communal gardens
- Close to local amenities



Elliot Oliver Sales
101 Promenade, Cheltenham GL50 1NW
01242 321091
www.elliottoliver.co.uk

