

Climperwell Road, Murock, Brimpsfield

£1,200,000

4 2 2

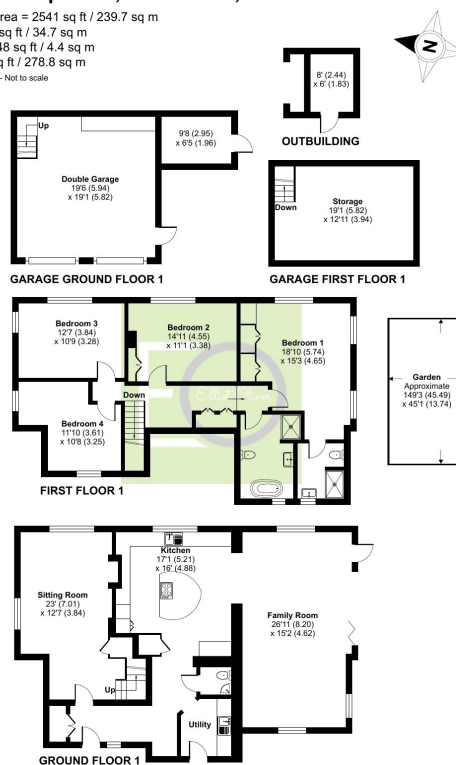


- Four bedroom detached house
- Rural Location
- Formal Lounge with Log Burner
- Open Plan Living/Dining/Kitchen Room
- Bi-Fold Doors to Garden
- Utility/Boot Room
- Master Bedroom with Fitted Wardrobes and En-Suite
- South Facing Gardens
- Detached Double Garage with Work Space Above
- Parking For Several Cars

Murock, Brimpsfield, Gloucester, GL4

Approximate Area = 2541 sq ft / 239.7 sq m
 Garage = 374 sq ft / 34.7 sq m
 Outbuilding = 48 sq ft / 4.4 sq m
 Total = 3003 sq ft / 278.8 sq m

For identification only - Not to scale



 Floor plan produced in accordance with RICS Property Measurement Standards incorporating International Property Measurement Standards (IPMS Residential) © Richeom 2024. Produced for Elliot Oliver Sales And Lettings Limited. REF: 1116866

As you step into the property, you're greeted by a spacious open hallway, bathed in natural light streaming through the large surrounding windows, imparting a sense of modern luxury. The hallway boasts elegant features, and really sets the tone for the rest of the home.

Moving forward, you enter the open plan kitchen family/dining room. This space offers a blend of style and practicality. The kitchen boasts white cabinets, and a sleek dark marble-look worktop. There is excellent storage space, along with the convenience of a generously sized island, ideal



for additional surface area or casual dining. Continuing on, the space seamlessly transitions into an inviting seating area, as well as a spacious dining area capable of accommodating a large dining table. The entire room is flooded with natural light, thanks to the expansive bifolding doors that open out to the garden, creating a seamless connection between indoor and outdoor living.

The rear garden, predominantly laid to lawn, offers a tranquil retreat, enclosed by hedges for added privacy. With plenty of space for outdoor activities, it provides the perfect setting for relaxation and enjoyment. Additionally, a patio area awaits, inviting residents to indulge in alfresco dining and social gatherings with friends and family.



Elliot Oliver Sales
101 Promenade, Cheltenham GL50 1NW
01242 321091
www.elliottoliver.co.uk

