



The Aspen, Lapwing Meadows, Tewkesbury Road, Coombe Hill, Gloucester, GL19

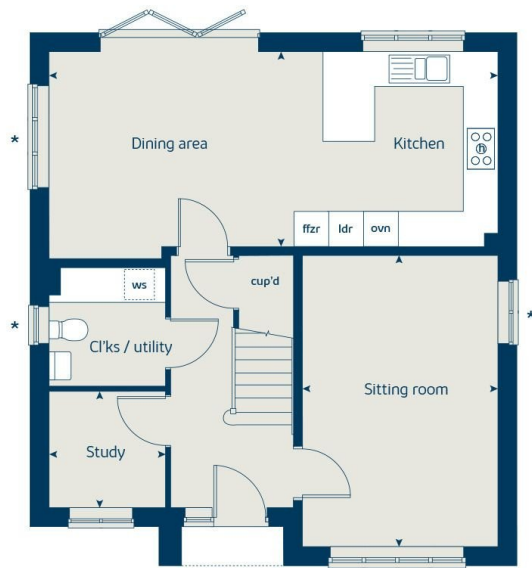
£475,000

🛏️ 4 🚿 2 🛋️ 2



The Aspen's unique design features, teamed with a number of traditional touches, give this home its unique and instant appeal. The property has a stunning open plan kitchen with dining room where guests will enjoy taking drinks outside through the stylish bi-fold doors. A separate sitting room and study means there's plenty of space to enjoy some peace and quiet. Upstairs are four bedrooms and a bathroom, bedroom one is unique with an en-suite and plentiful space for wardrobes. A single garage and two off-road parking spaces complete the plot.





- Separate sitting room
- Open plan kitchen and dining room
- Bi-fold doors leading to garden
- Low cost energy efficient
- 2 parking spaces
- Garage
- Downstairs cloakroom
- Ground floor study
- En-suite to bedroom 1

