



Clarence Street, Town Centre, Cheltenham, GL50

£175,000

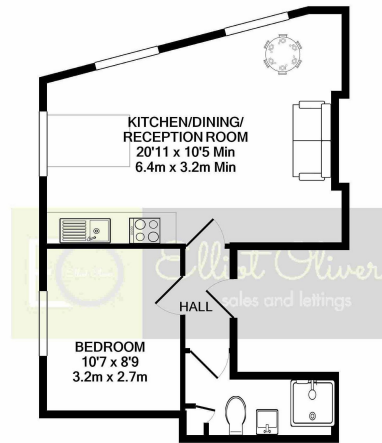
🛏️ 1 🍽️ 1 🚿 1



- One Bedroom
- Centrally Located
- Lovely Shower Room
- Fitted Appliances
- Upper Floor Apartment
- Kitchen/Reception Room
- Modern Kitchen
- No Onward Chain



This is an exceptional one bedroom apartment which is finished tastefully and is positioned in the Cheltenham Town Centre.



TOTAL APPROX. FLOOR AREA 452 SQ.FT. (42.0 SQ.M.)
 Whilst every attempt has been made to ensure the accuracy of the floor plan contained here, measurements of doors, windows, rooms and any other items are approximate and no responsibility is taken for any error, omission, or mis-statement. This plan is for illustrative purposes only and should be used as such by any prospective purchaser. The services, systems and appliances shown have not been tested and no guarantee as to their operability or efficiency can be given.
 Made with Metropix ©2021

Energy Efficiency Rating		
	Current	Potential
<i>Very energy efficient - lower running costs</i>		
(92 plus) A		
(81-91) B		
(69-80) C		80
(55-68) D		
(39-54) E	49	
(21-38) F		
(1-20) G		
<i>Not energy efficient - higher running costs</i>		
England & Wales	EU Directive 2002/91/EC	



Elliot Oliver Sales
 101 Promenade, Cheltenham GL50 1NW
 01242 321091
 www.elliottoliver.co.uk

