



Gloucester Road, Cheltenham, GL51 8NE

£425,000

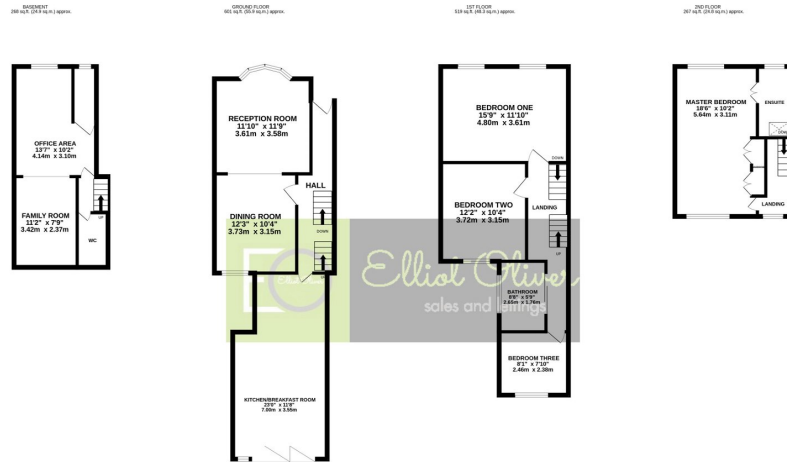
🛏️ 4 🚿 2 🛋️ 4



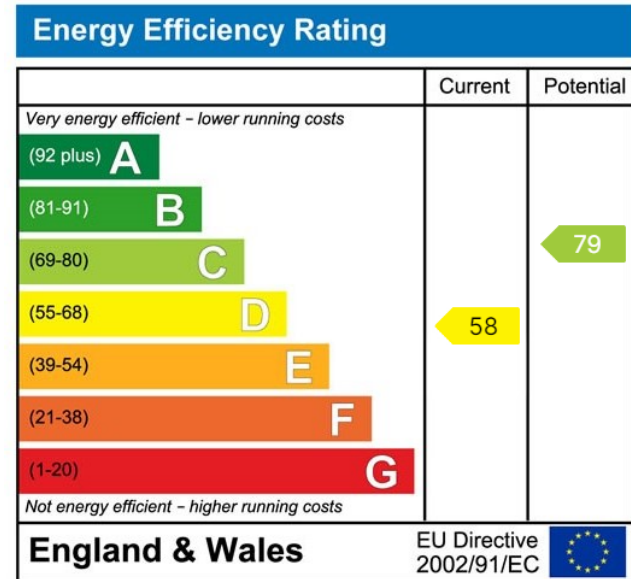
- Four Bedroom
- Period Terraced Property
- Stunning Extended Kitchen/ Diner
- Converted Basement
- Main Bedroom Offering En-Suite
- Attic Room
- Large Garden
- No Onward Chain
- Council Tax Band: C



This beautifully presented, period, four bedroom property based over four floors is located a short walking distance to the town Centre and train station with supermarkets, eateries and schools in close proximity.



TOTAL FLOOR AREA - 1656 sq ft. (153.8 sq m.) approx.
Whilst every attempt has been made to ensure the accuracy of the floorplans contained here, measurements of doors, windows, rooms and any other items are approximate and no responsibility is taken for any error, omission or mis-statement. This plan is for illustrative purposes only and should be used as such by any prospective purchaser. The services, systems and appliances shown have not been tested and no guarantee as to their operability or efficiency can be given.
 Made with Metagon 02023



Elliot Oliver Sales
 101 Promenade, Cheltenham GL50 1NW
 01242 321091
 www.elliottoliver.co.uk

