





# Vardroe Way, Tibberton, Droitwich, WR9

Offers Over £525,000

🛏️ 4 🚿 1 🚗 4



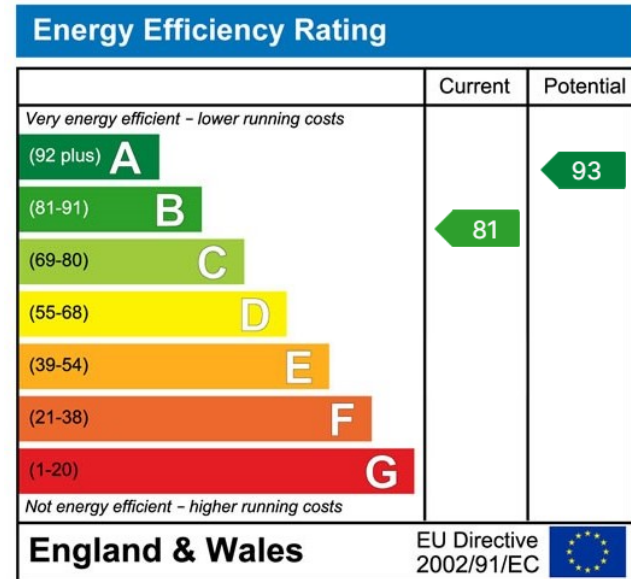
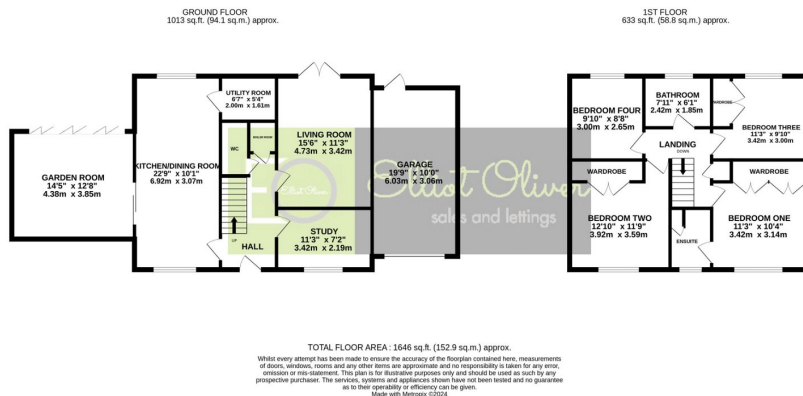
- Four bedrooms
- Downstairs WC
- Utility Area
- En-suite in main bedroom
- Garage and driveway
- Detached house
- Stylish open plan kitchen/dining area
- Fitted wardrobes in three bedrooms
- Private garden to the rear







This modern and stylishly presented four bedroomed detached family home is in the desirable location of Tibberton. This well-proportioned accommodation is finished to the highest of standards.



Elliot Oliver Sales  
 101 Promenade, Cheltenham GL50 1NW  
 01242 321091  
 www.elliottoliver.co.uk

