



# Gloucester Place, Cheltenham, GL52

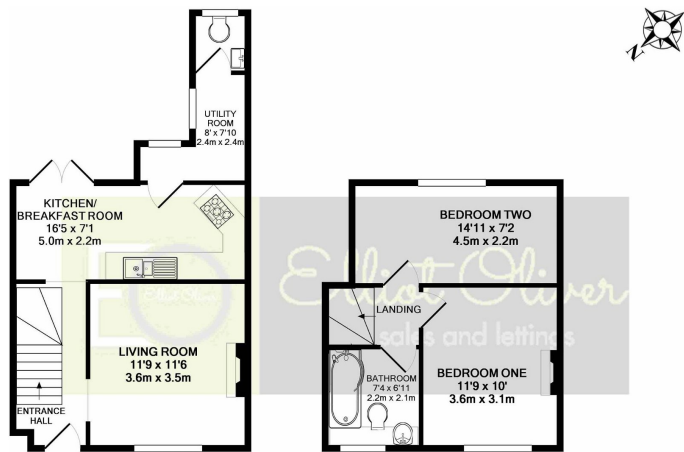
Offers Over £250,000

🛏️ 2 🪑 1 🚗 1



Agents note- This property has a flying freehold. The freehold and leasehold (72% of leasehold is this house and the basement flat owner 28%).





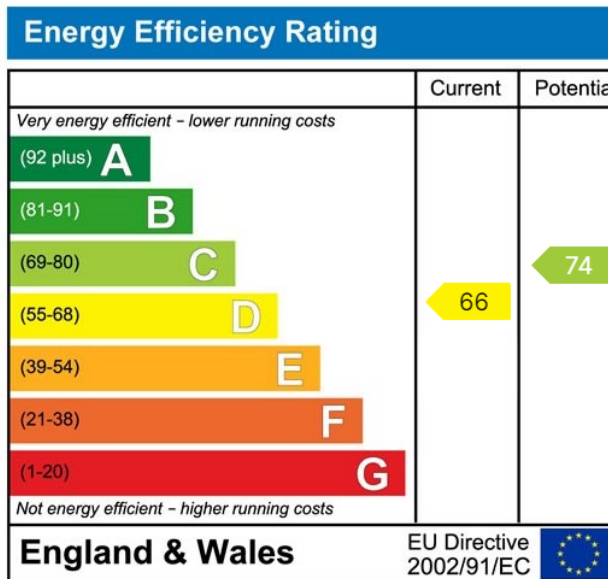
GROUND FLOOR  
APPROX. FLOOR  
AREA 384 SQ.FT.  
(35.7 SQ.M.)

1ST FLOOR  
APPROX. FLOOR  
AREA 311 SQ.FT.  
(28.9 SQ.M.)

TOTAL APPROX. FLOOR AREA 696 SQ.FT. (64.6 SQ.M.)

Whilst every attempt has been made to ensure the accuracy of the floor plan contained here, measurements of doors, windows, rooms and any other items are approximate and no responsibility is taken for any error, omission, or mis-statement. This plan is for illustrative purposes only and should be used as such by any prospective purchaser. The services, systems and appliances shown have not been tested and no guarantee as to their operability or efficiency can be given.  
Made with Metropix ©2019

- Two Bedrooms
- Two Double Bedrooms
- South Facing Garden
- Upstairs Bathroom
- Mid-Terraced Period House
- Gas Central Heating
- Separate Utility and Downstairs W/C
- Permit Parking



Elliot Oliver Sales  
101 Promenade, Cheltenham GL50 1NW  
01242 321091  
www.elliottoliver.co.uk

