



Midgate
Lodge,
Stede Hill,
Harrietsham,
Maidstone,
Kent,
ME17 1NR

Guide Price
£1,150,000



WOODS
ESTATE AGENTS



Nestled in the heart of the stunning Kent countryside, Midgate Lodge is a truly special home lovingly renovated by the current owners and set within approximately 1.42 acres of picturesque grounds. This spacious and thoughtfully designed property offers a flexible layout perfect for modern family living, combining luxury, practicality, and rural tranquillity.

At the heart of the home is a spectacular open-plan kitchen, diner, and lounge, complete with a stylish breakfast bar and bi-folding doors that flood the space with natural light and open out onto the gardens, ideal for entertaining or enjoying the countryside views. The home also features two further reception rooms including a stunning atrium-style extension, also with bi-folding doors, adding a wow-factor entrance and additional social or workspace.

Upstairs, there are four generously sized double bedrooms, offering plenty of room for a growing family or guests, all designed with comfort and style in mind. A separate one-bedroom annexe, complete with its own gym, provides fantastic potential for multi-generational living, guest accommodation, or even a home business setup.

For equestrian enthusiasts, the property boasts its own paddock and stables, while the extensive gated gravel driveway offers secure parking for multiple vehicles.



“

*We've
loved
making
this
house our
family
home.*

”



Modern comforts include a high-efficiency heat pump and underfloor heating throughout the ground floor, ensuring year-round warmth and energy efficiency. The property is connected to mains electricity and water with a private cesspool. There is likely mobile signal and data connectivity outdoors, offering convenience for both home and work life.

Midgate Lodge is located in the charming village of Harrietsham, a sought-after area offering the perfect balance between countryside living and convenience. The village features a primary school (1.7 miles), local shop (1.3 miles), pub (1.3 miles), and a mainline train station (1.5 miles) with direct services to London, making it ideal for commuters. The M20 motorway is within easy reach, just 5 miles away with connections to London and the Coast. Nearby towns such as Maidstone offer a wider range of shopping, dining, and leisure facilities, while the surrounding countryside is perfect for walking, riding, and outdoor pursuits.

Midgate Lodge perfectly balances contemporary living with the peace and beauty of its rural surroundings, making it a rare and desirable opportunity in a well-connected Kent location.



“
*There is
so much
outdoor
space for
everyone
to enjoy.*
”



Need to know...

- Stunning open-plan kitchen diner & lounge with breakfast bar and bi-folding doors
- Approx. 1.42 acres
- 1,968 sqft of flexible living space
- 4 double bedrooms
- Stunning atrium-style reception room with bi-folding doors
- 1 bedroom annexe with gym
- Equestrian paddock with stables
- Gated gravel driveway with parking for multiple cars
- Beautiful countryside location
- EPC Rating C
- Council Tax Band E
- Superfast (FTTC) broadband is available

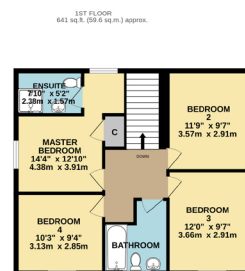
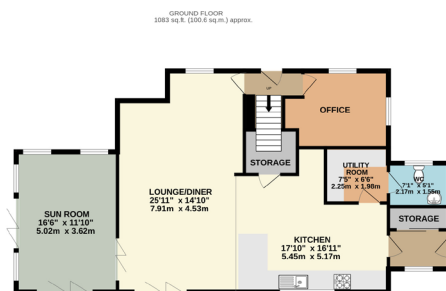




“

*The
location
is so
convenient
yet rural.*

”



TOTAL FLOOR AREA : 1968 sq.ft. (182.8 sq.m.) approx.

Whilst every attempt has been made to ensure the accuracy of the floorplan contained here, measurements of doors, windows, rooms and any other items are approximate and no responsibility is taken for any error, omission or mis-statement. This plan is for illustrative purposes only and should be used as such by any prospective purchaser. The services, systems and appliances shown have not been tested and no guarantee as to their operability or efficiency can be given.
Made with Metropix ©2025



Interested?

rebecca@woods-estates.co.uk

07354 848535