





Belle Vue Road

Bournemouth

£900,000

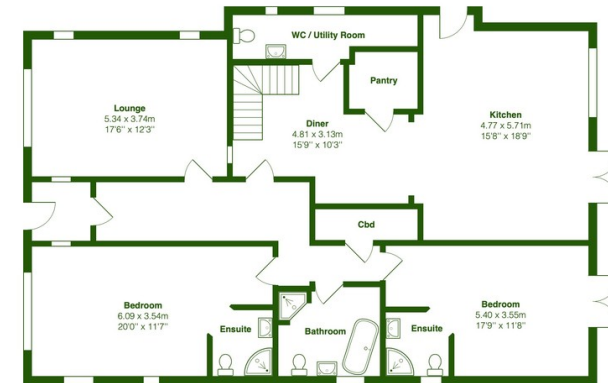
A great opportunity to purchase a spacious 5-bedroom family home with a generous rear garden stretching about 152ft. This location is incredible - within arm's reach of Southbourne's buzzing high street and less than a 5-minute walk from award-winning beaches.

Property Description

Walking up from the beach or along from Southbourne High Street, this home is sat far back on its immense plot - 60ft to the front. Walking past your garage and ample parking, head through your front door into the spacious hallway. The lounge is first on the left with high ceilings, a large front window, and a fireplace making this room the cosy hub of the house during winter. Going through the hallway you'll find two double bedrooms to your right, offering so much space and, both benefiting from ensuite bathrooms fitted with showers. The second bedroom has patio doors leading straight onto the garden.

To the left of the hallway is the heart of the home, the kitchen and dining area. There's so much space in this open-plan living area, with a large island and some barstool seating. There's plenty of storage, perfect for keeping your kitchen well organised. Downstairs there is also a guest WC which has space for a washing machine. Heading upstairs you'll find three bedrooms, all a fantastic size. Two of the bedrooms are in the process of being finished by the homeowner as planning permission has been granted. There will also be a bathroom upstairs. This home gives plenty of space for families and those working from home with plenty of office options to choose from.

Heading into the garden; this is the show stopper of the home. The garden extends just over 150ft and really comes to life in the spring and summer as the plants grow and the flowers blossom. There's just so much potential in the garden and it's the dream garden for children to run around in. There is also an outhouse that has been converted into a games room, no doubt a popular hang-out spot for teenagers or ideal as a home office - to escape the chaos. The garden benefits from a summer house and a paved area, making it great for entertaining friends or having a BBQ in summer. This is an opportunity you wouldn't want to miss. A spacious 5-bedroom family home with an extensive rear garden and a large drive is a unique find in Southbourne. Just minutes from the beach, it's the perfect place to call home and start your life by the beach.



Total Area: 230.1 m² ... 2477 ft²
All measurements are approximate and for display purposes only





 **MrGreen**

01202 387718