



Brook Mews, Palmers Green, London, N13

Available

£575,000 (Freehold)





Stunning 2-bedroom Mews house, spread over two-floors, with private courtyard garden and a fantastic finish throughout, in a secluded, gated development of just 9 properties.

Baker and Chase are delighted to present 5 Brook Mews, a beautifully designed 2-bedroom house, in a gated development of just 9 Mews houses in Palmers Green.

The property provides a spectacular open plan kitchen and living room, with glorious bi-folding doors onto a private, walled courtyard garden, a fully fitted kitchen boasting a selection of brand new Bosch appliances and separate utility room. In addition, the property offers two fully equipped, luxurious bathrooms. The bathroom downstairs offers a corner shower unit, stylish sink with storage under, shaving point and a Bluetooth mirror with light up surround. The bathroom on the first floor, provides a generous bath, with shower screen and shower over, a large vanity unit encompassing the wash hand basin and a glorious large mirrored wall and skylight. One of most prominent features has to be the spacious bedrooms, all of which can accommodate a double bed and ample bedroom furniture.

Being one of just 4 two bedroom within the Brook Mews development, the property benefits from an allocated parking space.

The Location

Positioned just South of the North Circular, between the junctions of the A10 (Great Cambridge Road) and Green Lanes, the location could not be more convenient. Green Lanes provides a number of bus routes and the location affords excellent road access to the main routes in and out of North London. Palmers Green B.R, Bowes Park B.R and Bounds Green London Underground provide a range of regular transport links into Central London

Tenure: Freehold

Location Authority: Enfield

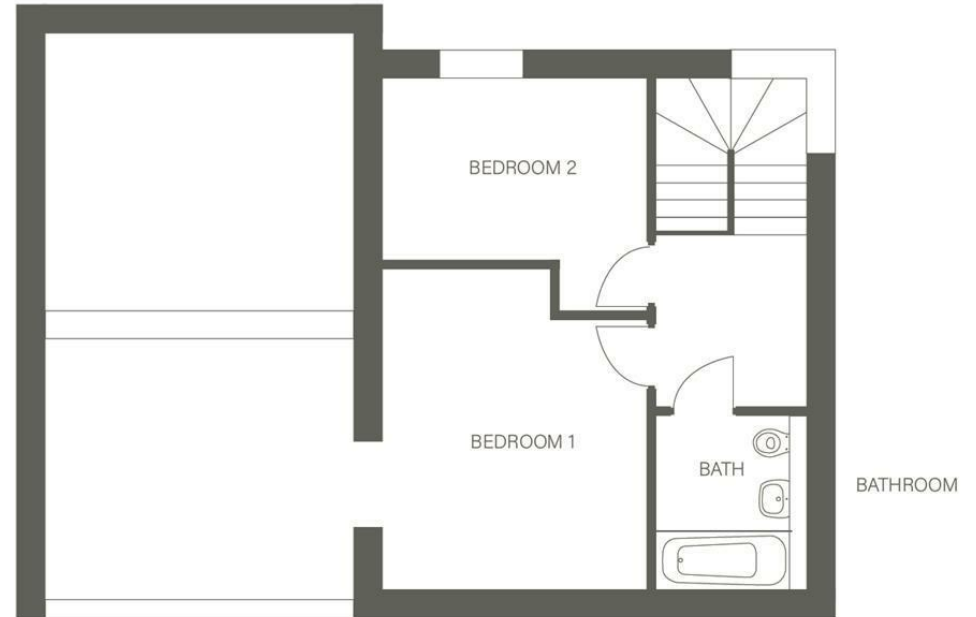
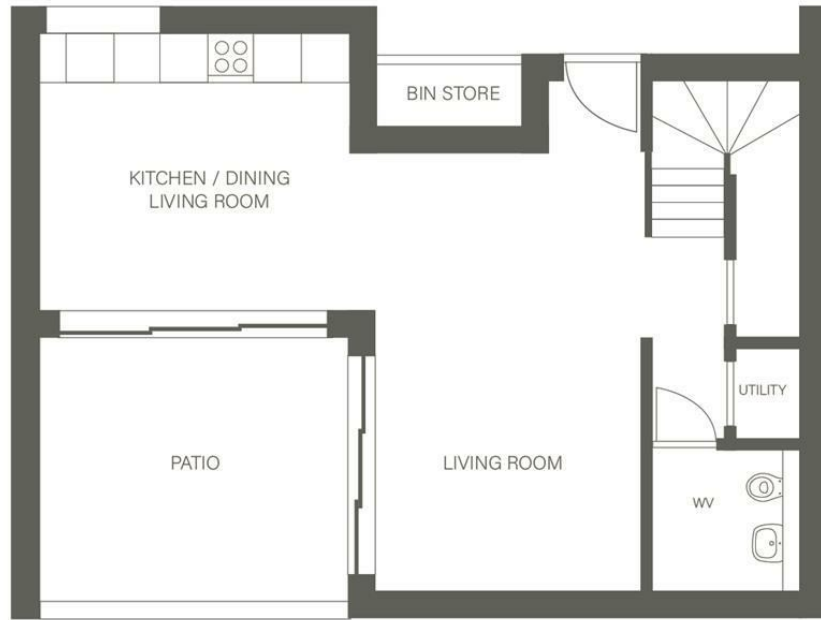
Council Tax Band: TBC

Service Charge: (Estimate): £180.90 pcm/£2,170.80 p/annum









EPC Rating / Local Authority: Enfield / Council Tax Band: New Build