



## Contemporary Cottage in the grounds of Arley Hall

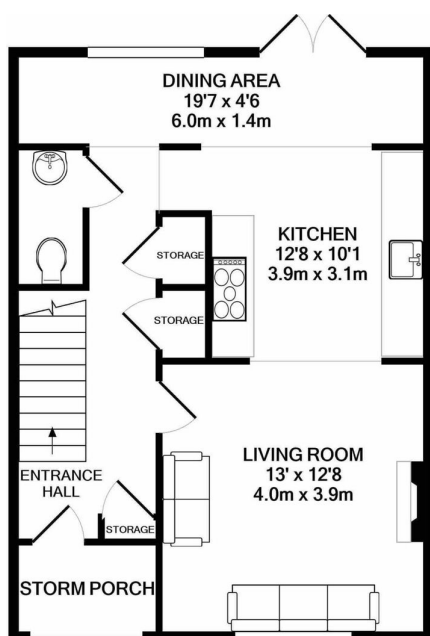
Offers Over £450,000

2 1 2

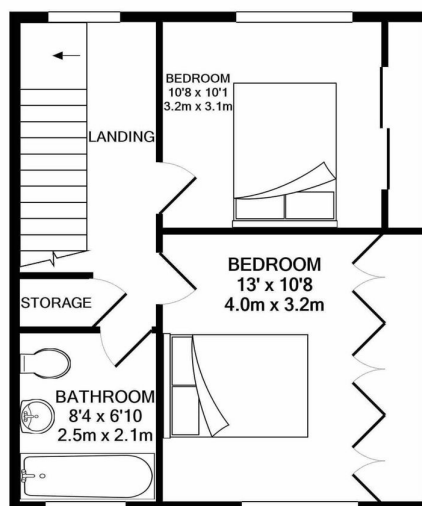




- Contemporary cottage forming part of a beautiful courtyard development
- Two double bedrooms
- Open plan kitchen and living spaces
- Lovely rural setting
- Secure location for a single person or young family
- Located within the grounds of Arley Hall & Gardens
- Stylish Villeroy & Boch bathroom
- Attractive garden backing onto woodland
- Stylish accommodation of around 1,000 sq ft
- Built in 2008 by esteemed developers PH Property Holdings



GROUND FLOOR  
APPROX. FLOOR  
AREA 539 SQ.FT.  
(50.1 SQ.M.)



1ST FLOOR  
APPROX. FLOOR  
AREA 452 SQ.FT.  
(42.0 SQ.M.)

TOTAL APPROX. FLOOR AREA 991 SQ.FT. (92.0 SQ.M.)

Whilst every attempt has been made to ensure the accuracy of the floor plan contained here, measurements of doors, windows, rooms and any other items are approximate and no responsibility is taken for any error, omission, or mis-statement. This plan is for illustrative purposes only and should be used as such by any prospective purchaser. The services, systems and appliances shown have not been tested and no guarantee as to their operability or efficiency can be given.  
Made with Metropix ©2020

A charming two double bedroom modern terraced cottage, forming part of an exclusive small development built by PH Property Holdings in 2008 within the stunning parkland setting of Arley Hall & Gardens, offering stylish open plan living space and a pretty garden backing onto woodland.