

A scenic view of the Clifton Suspension Bridge in Bristol, England, spanning a lush green gorge. The bridge's stone towers and suspension cables are prominent. In the background, numerous colorful hot air balloons are floating in a cloudy sky. A semi-transparent text box is centered over the image.

All Saints Mansions Clifton



All Saints Mansions Clifton BS8

- A beautiful spacious apartment in sought after Clifton •
- 2 bedrooms • Open plan lounge & dining space •
- Kitchen • Modern bathroom with underfloor heating •
- Period features • First floor • Garage •

A beautiful two bedroom spacious apartment in sought after Clifton

In summary, a beautiful, spacious two bedroom first floor apartment, with a lovely entrance hall, stunning lounge and dining space, kitchen, modern bathroom and garage.

Clifton is regarded as one of the most desirable locations in Bristol.

Vendors' comments *"We have absolutely loved living in this flat, with its high ceilings, period features, spacious hallway, and bright, airy rooms that feel so welcoming. The panoramic view from both the living room and main bedroom is a real highlight—such a lovely sight to wake up to overlooking Clifton. Its prime location has also been fantastic, just a short walk to everything (including the train station) and within the catchment area for an outstanding local primary school. We have made so many precious memories here—from getting engaged to welcoming our first-born—and while it will be hard to say goodbye, we know the next owners will love it just as much as we have."*

The **entrance hall** is a grand open space that welcomes you into this beautiful home. The high ceilings and LVT wood effect vinyl flooring help create a bright and spacious apartment. There is a cupboard for storage and an intercom for access into the building, and a storage space with shelving.

The **kitchen** is positioned off the hallway. There is a large window at the end of the room, and flooring that flows from the hallway. The kitchen has plenty of worktop space and units for storage, and a hatch to the lounge. There is a gas oven and plumbing for a washing machine, and dishwasher. The combi-boiler is housed here.

The **lounge and dining space** is simply stunning. This room is large enough for any furniture and for a large dining table and chairs. The high ceiling and period features along with a feature fireplace surround with gas fire makes it the perfect space for relaxing or entertaining. The flooring continues from the hallway and there is a wonderful bay window attracting plenty of natural light.

The **modern bathroom** is located off the hallway and between the two bedrooms. This recently fitted modern bathroom has a bathtub with integrated shower and screen. The flooring is tiled with underfloor heating and there is a modern towel radiator.

The **primary bedroom** is a large, bright and spacious double bedroom benefits from large windows looking over the front and side of this fabulous period property, allowing plenty of natural light to flood the room. The flooring flows from the hallway.

Bedroom 2 is ideal for a single bed, study or office space. The flooring continues from the hallway, and the high ceilings and large sash window creates a bright space.

The **garage** is accessed along the side of the house along the driveway. The garage is large enough for a car with an overhead door.

Sq ft size: 914 approx square feet (excluding garage).

Broadband connectivity availability: Ultra fast fibre.

Mobile coverage: 4G / 5G voice & data.

Council Tax: D.

Energy supply: Gas and electricity.

Tenure: Share of Freehold.

Additional info:

Built 1880.

Bathroom with underfloor heating 2022.

LVT (Luxury Vinyl Tiles) flooring 2023.

Worcester Combi-Boiler 2021.

Work to some sash windows 2022.

Service charge approx £110 per month.

LOCATION:

Clifton is regarded as one of the most desirable locations in Bristol.

With its chic boutiques, Bath-stone terraces and leafy garden squares, Clifton is one of Bristol's most beguiling neighbourhoods. It's also home to the city's most iconic attraction, the Clifton Suspension Bridge. Beginning with the Clifton Triangle and reaching into the area affectionately known as Clifton Village, this stunning Georgian area is always hugely popular with visitors.

Clifton is two miles from Bristol city centre.

Trains: London Paddington is less than 2hrs via Bristol Temple Meads, Reading is approx. 1.5hrs, and Cardiff 1hr.

By car: The M32, M4 and M5 give links to South Wales, London, Birmingham and the Midlands.



BRISTOL CITY CENTRE - 2 MILES

BATH - 15.6 MILES

CHEPSTOW - 17 MILES

MONMOUTH - 32.4 MILES

GLOUCESTER - 34.5 MILES

CARDIFF - 40 MILES

CHELTENHAM - 42 MILES

All distances are approximate













































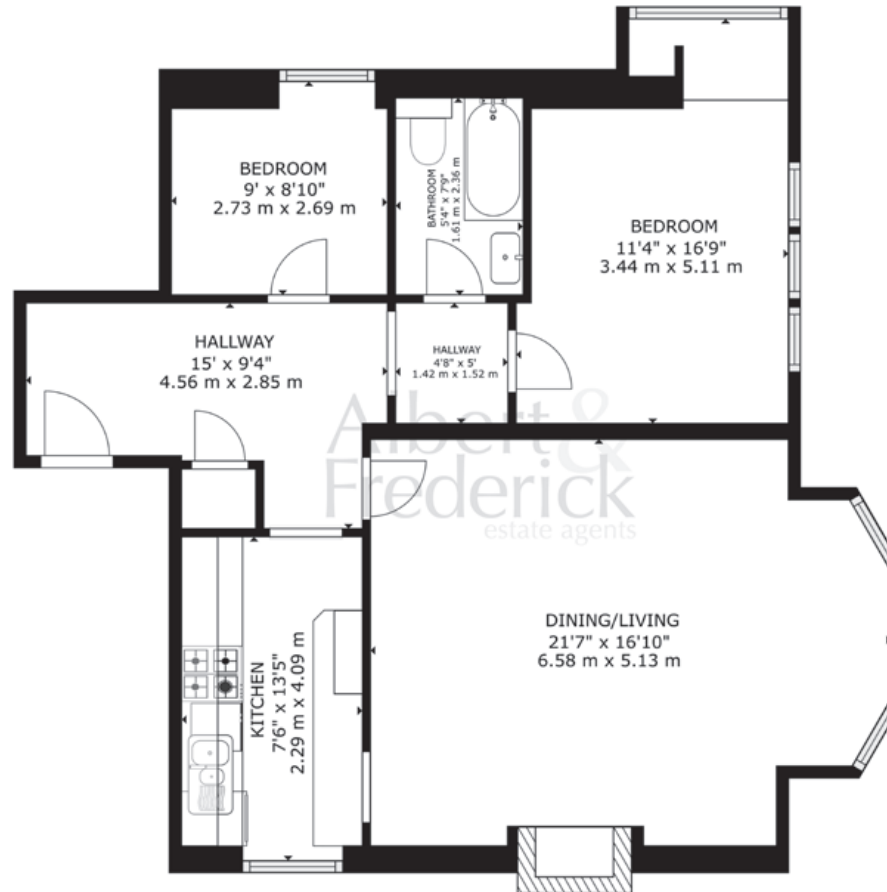




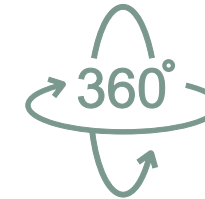


t: 01594 546776
 m: 07747 456069
 e: hello@albertandfrederick.com
 w: albertandfrederick.com
 s: @albandfrederick

3 ALL SAINTS MANSIONS, ALL SAINTS ROAD, CLIFTON, BRISTOL BS8 2JQ



GROSS INTERNAL AREA
 FLOOR 1: 914 sq ft, 84.9 m²
 TOTAL: 914 sq ft, 84.9 m²
 SIZES AND DIMENSIONS ARE APPROXIMATE, ACTUAL MAY VARY.



VIRTUAL TOUR
 CLICK HERE



SKY VIEW
 CLICK HERE

Score	Energy rating	Current	Potential
92+	A		
81-91	B		
69-80	C		79 C
55-68	D	63 D	
39-54	E		
21-38	F		
1-20	G		

If you require this document in an alternative format, please contact Albert & Frederick on Tel: 01594 546776. IMPORTANT NOTICE: Albert & Frederick, their client and any joint agents give notice that: A. They are not authorised to make or give any representations or warranties in relation to the property either here or elsewhere, either on their own behalf or on behalf of their client or otherwise. They assume no responsibility for any statement that may be made in these particulars. These particulars do not form part of any offer or contract and must not be relied upon as statements or representation of fact. B. Any areas, measurements or distances are approximate. The text, photographs and plans are for guidance only and are not necessarily comprehensive. It should not be assumed that the property has all necessary planning, building regulation or other consents and Albert & Frederick have not tested any services, equipment or facilities. Purchasers must satisfy themselves by inspection or otherwise. Photographs and details February 2025.

Albert &
Frederick
estate agents