

Swiss Cottage
Ruardean Woodside





Swiss Cottage Ruardean Woodside GL17

- A spacious detached family home
- 4 double bedrooms (1 en-suite)
- Located in the sought-after village of Ruardean Woodside
- Open plan kitchen & dining space
- Separate utility / laundry room
- Spacious lounge
- Downstairs office / snug / bedroom
- Downstairs WC
- Picturesque forest views
- Private rear garden & patio
- Front private driveway for multiple cars

A beautifully presented detached family home in the picturesque village of Ruardean Woodside

In summary, a beautifully presented detached family home with 4 double bedrooms (1 en-suite), family bathroom, spacious open plan kitchen & dining room, large lounge, utility room, downstairs WC, downstairs office / snug / bedroom, a private driveway for multiple cars & electric for a charging point, rear private garden & patio, front garden and patio area with stunning views of the forest and set in the peaceful village of Ruardean Woodside.

The property is situated in the sought-after village of Ruardean Woodside in the heart of the Forest of Dean, a short drive from the river Wye, the river Severn and the picturesque towns of Coleford, Ross-On-Wye and Monmouth.

The convenient location affords easy access to Cheltenham, Gloucester, Bristol, Birmingham and Cardiff whilst being surrounded by some of the best countryside England has to offer.

The Royal Forest of Dean is home to stunning walks and nestled between the river Wye and the river Severn.

Vendors' comments "We've loved living here. The views of the forest from the house are amazing and enjoyed the wonderful walks on the with dogs. The local school in the village is great. Lots of lovely memories to take with us."

This beautiful detached family home has private off road parking for multiple cars and electric for a car charge point if required. The property enjoys oil central heating and has wonderful views of the forest.

The entrance porch welcomes you into this very special home. The porch is a large space and the ideal place to kick off those muddy shoes after a forest walk. The wooden flooring continues in to the hallway and leads you to the lounge, second reception room, WC, and open plan kitchen & dining room. There is a modern staircase with glass panelling to help create a bright and light space.

The lounge is positioned off the hallway. There is wooden flooring and double patio doors that leads to your very own private terrace to enjoy the forest views. The room is very spacious and has a window looking out to the side of the house. The lounge leads through to the dining space through an open plan area.

The kitchen & dining room lies to the rear of the house. This large open plan room has space in abundance, and offers the ideal place for entertaining guests. There is a spacious dining area which flows from the kitchen & lounge and enjoys double patio doors that lead directly onto the rear patio and garden. The kitchen has lots of wooden shaker style units plenty of worktop space, and has the luxury of a centre island for additional worktop space. There is a double range cooker (LPG). and an additional separate **utility / laundry room** which has access to the side of the house. There are lots of windows to attract the natural light and rustic flagstone type tiles through this open space.

The WC is positioned along the hallway. There is a modern white basin and toilet, with half tiled walls and black and white patterned flooring.

The reception / office / snug / bedroom is another very large room. This room can be utilised in many different ways, an ideal office, snug or 5th bedroom. There is a large window looking out to the front of the house and benefits from a large walk-in cupboard which also houses the combi-boiler.

The landing is flows from the modern staircase. This bright and light space guides you to the 4 double bedrooms and family bathroom. There is a lovely secret space with a Velux above the stairs to create a wonderful space.

The primary bedroom is a wonderful double bedroom. This spacious room has large double wardrobes, dark wooden flooring, a dressing room and seating area and large en-suite modern shower room.

The en-suite shower room is positioned off the primary bedroom. This room is brightly decorated with light blue half wall tiles. The grey tiled floor and ultra modern black and white shower create a fabulous space. There is a large window out towards the front of the house.

The family bathroom is located off the landing. This room has a white bathroom suite with an over the bath shower. There is a large window to the rear and blue tiled flooring.

Bedroom 2 is a large room that benefits from a large storage cupboard. The spacious double bedroom has carpeted floor and a window to the front of the house.

Bedroom 3 is positioned to the rear of the house. This double room has a large storage cupboard and carpeted floor.

Bedroom 4 is another spacious double bedroom. Looks to the rear of the house and has carpeted floors. There is a large storage cupboard and enough room for a dressing table, sofa or workspace.

The private driveway is large enough for multiple cars. There is a large brick pathed driveway benefiting from electricity for a car charging point if required. There is a lawned area and private terrace with direct access from the lounge. This space has beautiful view of the forest and beyond.

The rear garden has a large patio area with raised beds and side access to the front of the house. There are double patio doors directly into the dining room and stairs leading up to the private lawned garden with a shed where there is a gate to access the quiet road.

Garden: Private rear garden with large patio, and front terrace and lawned area.

Building: Built approx. 1995.

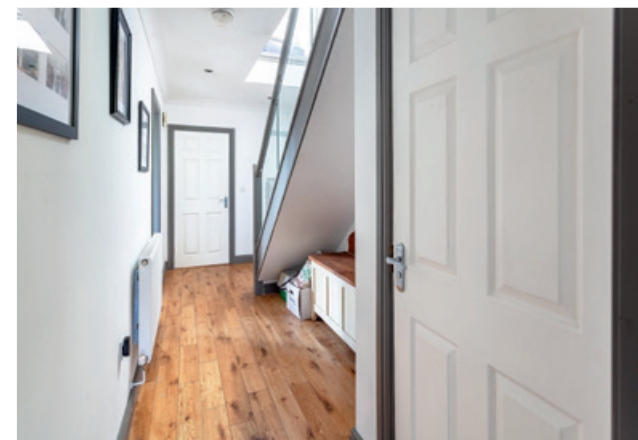
Sq ft size: 2084 approx square feet.

Broadband connectivity: Ultra fast.

Mobile coverage: 4G voice & data.

Council Tax: E.

Tenure: Freehold.



LOCATION:

Perfectly situated in the heart of the Forest of Dean.

The picturesque village of Ruardean Woodside is situated in the heart of the Forest of Dean which is home to some of the finest countryside in England. The location is nestled between the river Wye and the river Severn and has an abundance of stunning walks and outdoor activities including Go Ape, river cruises, canoeing and white water rafting.

The Forest of Dean is perfectly situated to access many major towns and cities. A short drive from Coleford, Ross-on-Wye and Monmouth and easy accessible to Gloucester, Cheltenham, Bristol, Birmingham and Cardiff.

The Forest of Dean is perfect for those who enjoy the countryside and all that nature offers as well as being conveniently located to major towns and cities for commuters. This area affords people the best of both worlds both work and play. There are many fantastic restaurants and local pubs as well plenty of local artisan shops.

ROSS ON WYE - 6 MILES
COLEFORD - 6 MILES
LYDNEY - 10 MILES
MONMOUTH - 12 MILES
GLOUCESTER - 16 MILES
CHELTENHAM - 23 MILES
BRISTOL - 37 MILES

All distances are approximate





































































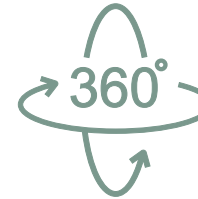










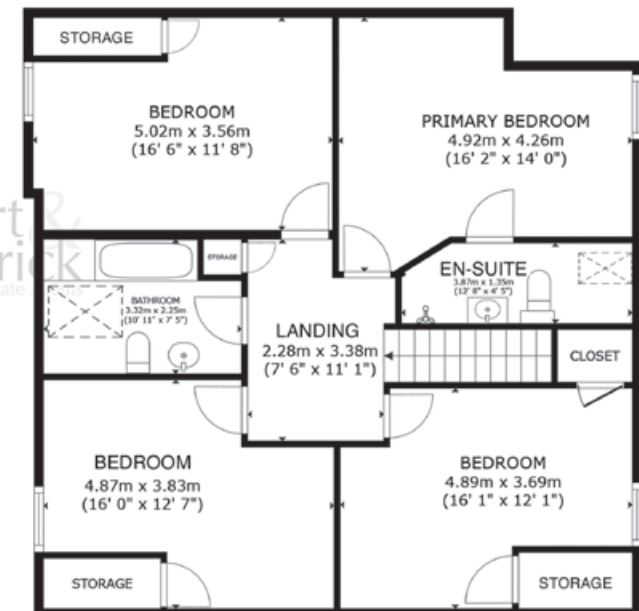
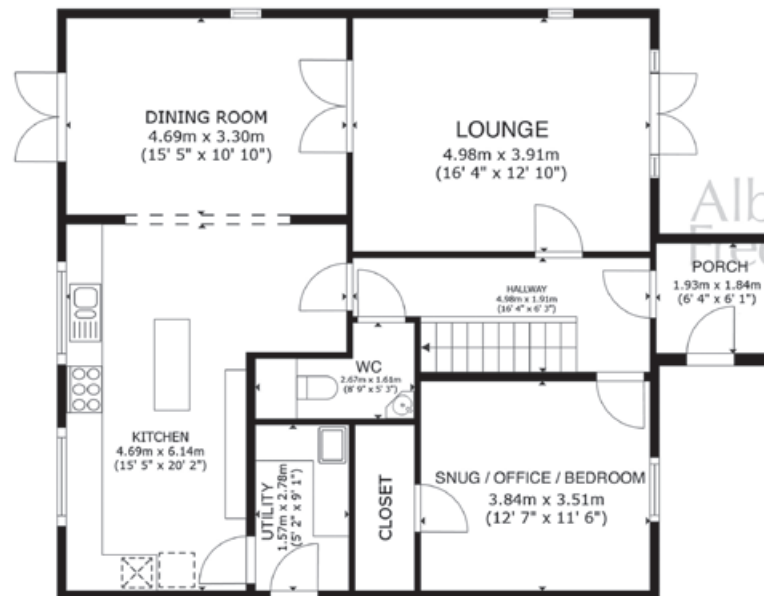


VIRTUAL TOUR
CLICK HERE



SKY VIEW
CLICK HERE

t: 01594 546776
m: 07747 456069
e: hello@albertandfrederick.com
w: albertandfrederick.com
s: @albandfrederick



GROSS INTERNAL AREA
GROUND FLOOR 97.5 m² (1,049 sq.ft.) FLOOR 1 96.2 m² (1,035 sq.ft.)
TOTAL : 193.6 m² (2,084 sq.ft.)

SIZES AND DIMENSIONS ARE APPROXIMATE, ACTUAL MAY VARY.



SWISS COTTAGE,
FOREST ROAD,
RUARDEAN WOODSIDE,
GL17 9XR

Asking price £525,000

If you require this document in an alternative format, please contact Albert & Frederick on Tel: 01594 546776. IMPORTANT NOTICE: Albert & Frederick, their client and any joint agents give notice that: A. They are not authorised to make or give any representations or warranties in relation to the property either here or elsewhere, either on their own behalf or on behalf of their client or otherwise. They assume no responsibility for any statement that may be made in these particulars. These particulars do not form part of any offer or contract and must not be relied upon as statements or representation of fact. B. Any areas, measurements or distances are approximate. The text, photographs and plans are for guidance only and are not necessarily comprehensive. It should not be assumed that the property has all necessary planning, building regulation or other consents and Albert & Frederick have not tested any services, equipment or facilities. Purchasers must satisfy themselves by inspection or otherwise. Photographs and details October 2024.

Albert &
Frederick
estate agents