

Paradu
Ruardean Woodside





Paradu Ruardean Woodside GL17

- A spacious detached house in the peaceful village of Ruardean Woodside •
- 4 bedrooms (1 en-suite) • Family bathroom • Spacious lounge • Downstairs WC & Utility room •
- Kitchen with separate large dining room • Large sun room •
- Beautiful large garden with spectacular forest views • Patio areas •
- Private driveway for multiple cars • Summer House • Large workshop •
- Greenhouse • Immaculate large lawned garden •

A spacious detached family home with spectacular views in Ruardean Woodside

In summary, a wonderful spacious detached house, with four bedrooms (1 en-suite), a family bathroom, lounge, sun room, kitchen & separate dining room, and a downstairs WC & utility space. This property has a large lawned garden, patio spaces, summer house, workshop and a private driveway for multiple cars. The property is situated in the sought-after village of Ruardean Woodside in the heart of the Forest of Dean, a short drive from the river Wye, the river Severn and the picturesque towns of Coleford, Ross-On-Wye and Monmouth.

The convenient location affords easy access to Cheltenham, Gloucester, Bristol, Birmingham and Cardiff whilst being surrounded by some of the best countryside that England has to offer.

The Forest of Dean is home to stunning walks and nestled between the river Wye and the river Severn.

Vendors' comments *"Having raised our family who have now all flown the nest its time for us to downsize and let another family enjoy the space! There are stunning woodland walks to enjoy around the village and lovely peaceful evenings sat in the garden during the summer! On a clear night you can also see the severn Bridge lights!"*

The entrance hall welcomes you into this spacious house, with a window to the left, wooden flooring and high ceilings. Enough space for a chair or bench to take your muddy boots off after a country walk.

The WC & utility room is location off entrance hall. There is a WC & basin, a large window, Vinyl flooring and a laundry area.

The lounge is directly off the hallway. This spacious room attracting plenty of natural light from the large window and adjoining sun room. It has a stone fireplace feature to give that rustic cottage feel. The floor is carpeted with painted walls.

The Sun room is directly from the lounge through double doors. This wonderful space is part brick built with large windows showing off the fabulous forest views and garden. There is direct access on to the patio area.

The kitchen flows from the hallway. The large window looks out over the rear garden and the views beyond and attracting lots of natural light. This room has lots of storage space with worktops on the white shaker style units and a large cupboard. There is direct access to the adjoining dining room.

The large dining room is a spacious area which can house a large family dining table and chairs. The large windows create a light space and is ideal for those family get together.

The landing accessed by stairs from the living room and leads you to the bedrooms and family bathroom. There is a large airing cupboard which houses the water boiler.

The Primary bedroom is looking out over the rear of the house with stunning views of the forest. This spacious room is a large double bedroom, is carpeted and benefits from an en-suite shower room.

The en-suite is adjoining the primary bedroom. This room is light and bright with a large window. The walls are tiled and the floor is vinyl. There is a large walk-in shower cubicle with an electric shower.

The family bathroom is positioned to the front of the house. There is a bath tub with electric shower. There is a toilet with basin, vinyl flooring and a large window.

Bedroom 2 looks out over the front of the property. This double bedroom has plenty of space for a wardrobe and chest of drawers. The room has carpeted flooring and a large window.

Bedroom 3 is a large double bedroom. This room has a large window that enjoys spectacular views to the forest and over the rear garden. The floor is carpeted.

Bedroom 4 is a single bedroom. Positioned to the rear of the house, with a large window with wonderful views. The floor is carpeted and large enough for a wardrobe.

The rear terrace and gardens are accessed from the side gate of the house or directly from the sun room. This lovely garden has terraced areas with spectacular views and the perfect place for entertaining guests. The immaculate lawned garden is beautiful, there is a summer house, large workshop and a greenhouse.

Sq ft size: 1773 approx square feet.

Broadband connectivity: Ultra fast.

Mobile coverage: 4G voice & data.

Council Tax: C.

Tenure: Freehold.



LOCATION:

Perfectly situated in the heart of the Royal Forest of Dean.

The picturesque village of Ruardean Woodside is situated in the heart of the Royal Forest of Dean which is home to some of the finest countryside in England. The location is nestled between the river Wye and the river Severn and has an abundance of stunning walks and outdoor activities including Go Ape, river cruises, canoeing and white water rafting.

The Royal Forest of Dean is perfectly situated to access many major towns and cities. A short drive from Coleford, Ross-on-Wye and Monmouth and easy accessible to Gloucester, Cheltenham, Bristol, Birmingham and Cardiff.

The Royal Forest of Dean is perfect for those who enjoy the countryside and all that nature offers as well as being conveniently located to major towns and cities for commuters. This area affords people the best of both worlds both work and play. There are many fantastic restaurants and local pubs as well plenty of local artisan shops.

ROSS ON WYE - 6 MILES
COLEFORD - 6 MILES
LYDNEY - 10 MILES
MONMOUTH - 12 MILES
GLOUCESTER - 16 MILES
CHELTENHAM - 23 MILES
BRISTOL - 37 MILES

All distances are approximate







































































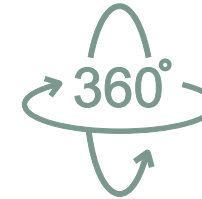
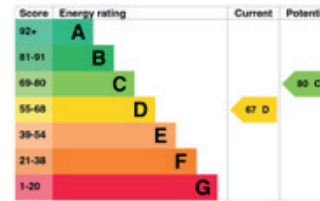










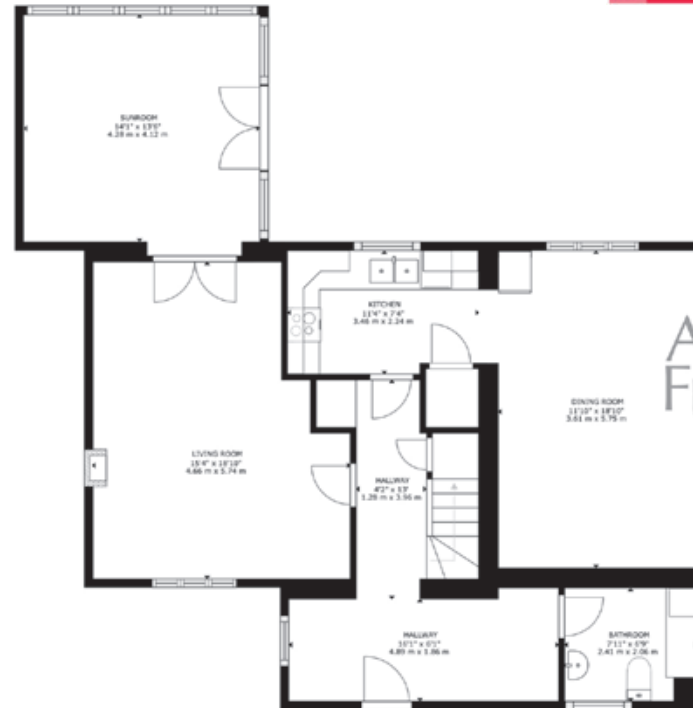


VIRTUAL TOUR
CLICK HERE



SKY VIEW
CLICK HERE

t: 01594 546776
m: 07747 456069
e: hello@albertandfrederick.com
w: albertandfrederick.com
s: @albandfrederick



Albert & Frederick
estate agents



PARADU,
RUARDEAN WOODSIDE,
GL17 9XR

Asking price £475,000

FLOOR 1

GROSS INTERNAL AREA
FLOOR 1: 1972 sq ft, 99.6 m², FLOOR 2: 701 sq ft, 65.11 m²
TOTAL: 1793 sq ft, 164.71 m²
SIZES AND DIMENSIONS ARE APPROXIMATE, ACTUAL MAY VARY.

FLOOR 2

If you require this document in an alternative format, please contact Albert & Frederick on Tel: 01594 546776. IMPORTANT NOTICE: Albert & Frederick, their client and any joint agents give notice that: A. They are not authorised to make or give any representations or warranties in relation to the property either here or elsewhere, either on their own behalf or on behalf of their client or otherwise. They assume no responsibility for any statement that may be made in these particulars. These particulars do not form part of any offer or contract and must not be relied upon as statements or representation of fact. B. Any areas, measurements or distances are approximate. The text, photographs and plans are for guidance only and are not necessarily comprehensive. It should not be assumed that the property has all necessary planning, building regulation or other consents and Albert & Frederick have not tested any services, equipment or facilities. Purchasers must satisfy themselves by inspection or otherwise. Photographs and details June 2024.

Albert &
Frederick
estate agents