



Ground Floor Flat, 29 West End  
Road, Morecambe, LA4 4DJ

Ground Floor Flat, 29 West End Road, Morecambe

## ***The property at a glance***

2  1  1 

- Neutrally Presented Lower Ground Floor Flat
- Two Bedrooms; En Suite to Master
- Spacious Lounge & Stylish Kitchen Diner
- Garden Room/Conservatory
- Contemporary Three Piece Bathroom Suite
- Enclosed Rear Yard
- Great Location just a Minutes Walk from Sea Front
- Rent Includes Gas and Water rates



Get in touch today

01524 401402  
[info@gfproperty.co.uk](mailto:info@gfproperty.co.uk)  
[gfproperty.co.uk](http://gfproperty.co.uk)

# **£875 PCM**

# Get to know the property



\*\*\*Rent Includes Gas and Water rates\*\*\*

Neutrally presented lower ground floor flat offering two double bedrooms.

This two bedroom lower ground floor flat offers spacious accommodation with a open plan kitchen diner and a separate lounge, two bedrooms and a contemporary bathroom suite.

The stylish, modern fitted kitchen diner offers a large range of wall and base units in grey gloss with wood effect worktops to complement, integrated oven, hob and extractor unit, space for fridge and freezer, plus plumbing for washing machine.

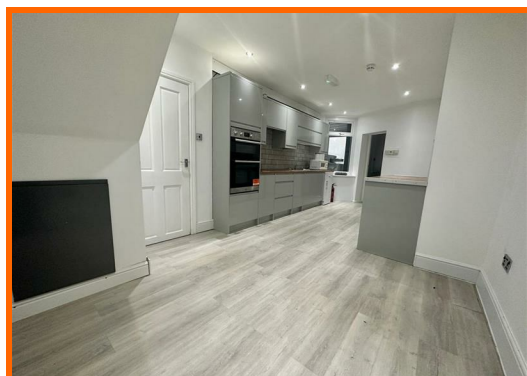
The lounge is tastefully decorated with a bay window to the front elevation and front door access with step. The flat also offers a conservatory/garden room which could be used as an additional sitting room, with sliding door access out to an artificially turfed rear yard.

The contemporary bathroom offers a three piece suite in white with fitted bath, low flush WC and wash hand basin.

The master bedroom benefits from an en suite shower room and the second bedroom could alternatively be used as a home office.

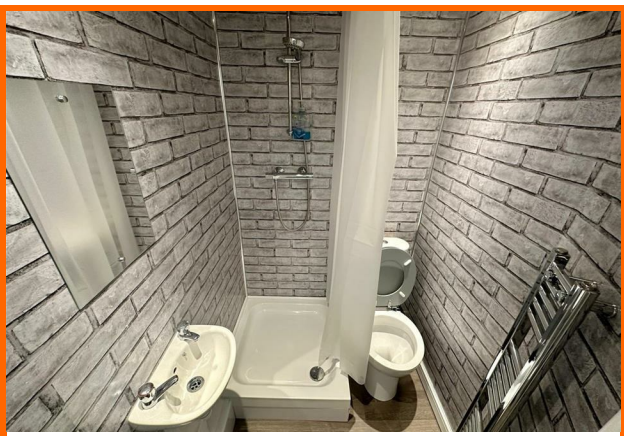
Situated in a great location just a minutes' walk from the sea front, within easy reach of Morecambe Town Centre and transport links including regular bus routes, Morecambe train station and access to the M6 motorway via 'The Bay Gateway' link road.

\*Please note Gas & Water bills will be paid (proportionately) to the landlord as the meter is communal with the whole building.





**Ground Floor Flat, 29  
West End Road,  
Morecambe, LA4 4DJ**



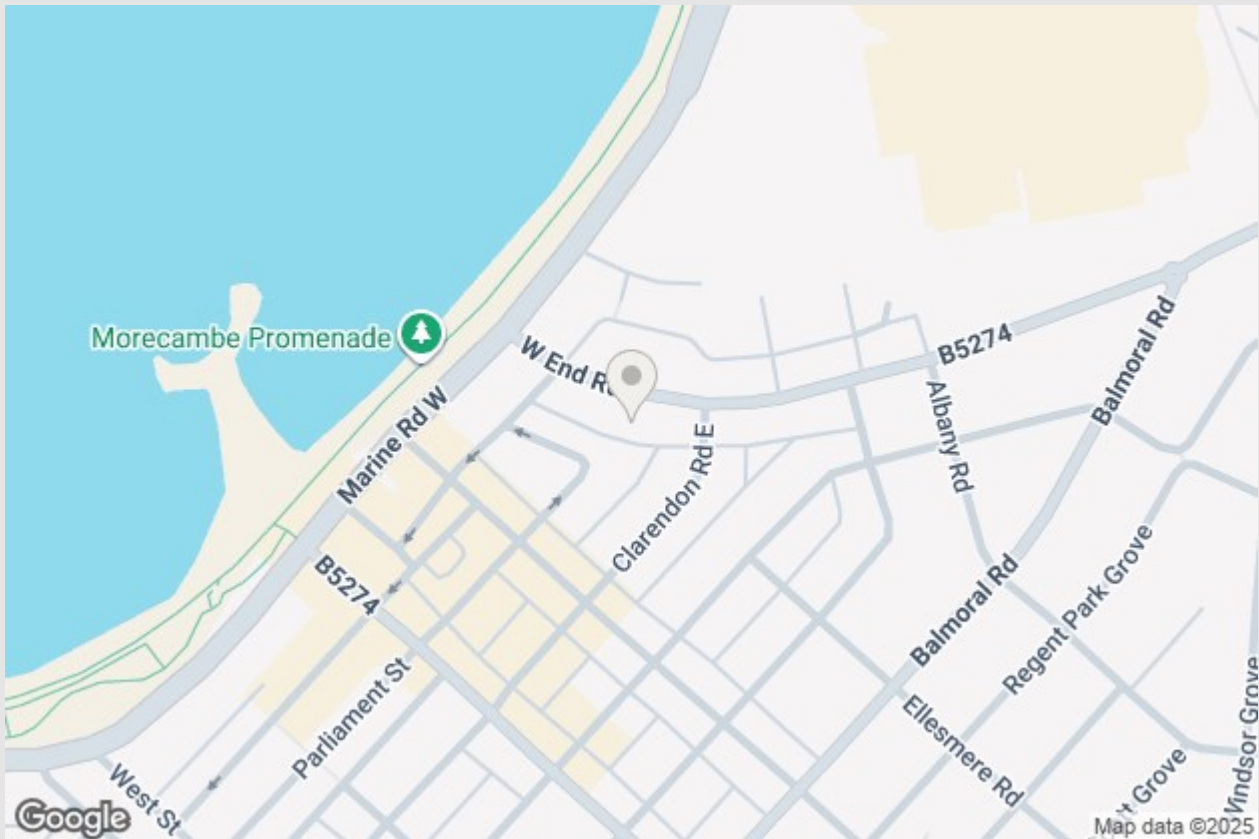
**Get in touch today**

01524 401402

[info@gfproperty.co.uk](mailto:info@gfproperty.co.uk)

[gfproperty.co.uk](http://gfproperty.co.uk)

# Take a nosey round



Working in association with

**JANE PARTON**  
MORTGAGE STUDIO

**01524 967000**

**[www.janepartonmortgagestudio.co.uk](http://www.janepartonmortgagestudio.co.uk)**

Offices in Morecambe & Lancaster:

2a China Street, Lancaster, LA1 1EX

37 Princes Crescent, Bare, Morecambe, LA4 6BY

316 Lancaster Road, Torrisholme, Morecambe, LA4 6LY



**Get in touch today**

01524 401402

[info@gfproperty.co.uk](mailto:info@gfproperty.co.uk)

[gfproperty.co.uk](http://gfproperty.co.uk)

