



17 Second Terrace,
Sunderland Point, LA3

3HT

17, Second Terrace, Sunderland Point

The property at a glance

3  1  1 

- Three Bedroom Mid Terrace
- Fully Renovated Throughout
- Modern Kitchen and Utility
- Modern Four Piece Bathroom
- Four Allocated Parking Spaces
- Beautiful Rear Garden with Open Aspect Countryside Views
- Idyllic Location on Sunderland Point
- EPC: D
- Council Tax Band: B
- Tenure: Freehold



Get in touch today

01524 401402
info@gfproperty.co.uk
gfproperty.co.uk

£300,000

Get to know the property



Nestled on the stunning peninsula of Sunderland Point, this home offers a delightful blend of character and modern living. The property has been thoughtfully renovated to create a warm and inviting atmosphere, perfect for families or those seeking a tranquil retreat.

Sunderland Point is accessed via a winding tidal road from the village of Overton - an impressive approach to the peninsula that truly entices you. 17 Second Terrace boasts bright and airy rooms set over three floors and is immaculately presented in neutral tones.

One of the standout features of this home is its beautiful views to the front over the river Lune towards the Bowland Fells, countryside and the Irish Sea to the rear providing a picturesque backdrop that is ever-changing. The unique location adds to the appeal, offering a strong sense of community while being just a stone's throw away from the natural beauty of the coastline. With nearby access to Lancaster and Morecambe, you're never too far away from local amenities, but benefit from a remoteness hard to find elsewhere.

Inside, the property boasts modern fittings that enhance the living experience without compromising its original charm. Each room has been designed to maximise space and light, creating a welcoming environment for both relaxation and entertaining.

This home is not just a place to live; it is a lifestyle choice, offering the perfect balance of comfort and scenic beauty. Whether you are enjoying a quiet evening in or hosting friends and family, this property is sure to impress. Don't miss the opportunity to make this characterful home your own in a location that is truly special.





Front Porch

Floored with coir matting.

Hallway

Central heating radiator, under stairs storage, wood effect luxury vinyl tile flooring, doors to front porch, living room, kitchen, utility and storage cupboard, stairs to first floor.

Living Room

Double glazed wooden window, single glazed wooden window, central heating radiator, log burner with flagstone hearth, built in storage cupboard, wood effect luxury vinyl tile flooring.

Kitchen

Spotlights, central heating radiator, wooden single glazed window with secondary glazing, wood effect laminate worktops, wall and base units, 1.5 composite sink with mixer tap and draining board, 4 ring electric hob, oven, integrated fridge freezer, plumbing for dishwasher, wood effect laminate flooring.

Boot Room

Spotlights, 2x UPVC window, central heating radiator, laminate worktops, base units, plumbing for washing machine, space for tumble dryer, composite sink with mixer tap, cupboard with electric boiler, luxury vinyl tile flooring, wooden double glazed door to rear.

First Floor Landing

Single glazed window with secondary glazing, spotlighting, doors to family bathroom and bedroom, stairs to second floor.

Bedroom One

2x Single glazed windows with secondary glazing, central heating radiator.

Family Bathroom

Spotlight lighting, double glazed window, towel radiator, panelled bath with mixer tap and tiled splashback, low level WC, direct feed rain head shower with rinse head, vanity wash basin with mixer tap, airing cupboard. Luxury vinyl tile flooring,

Second Floor Landing

Spotlighting, single glazed window with secondary glazing, storage cupboard, doors to bedrooms two and three.

Bedroom Two

2x double glazed wooden windows, central heating radiator.

Bedroom Three

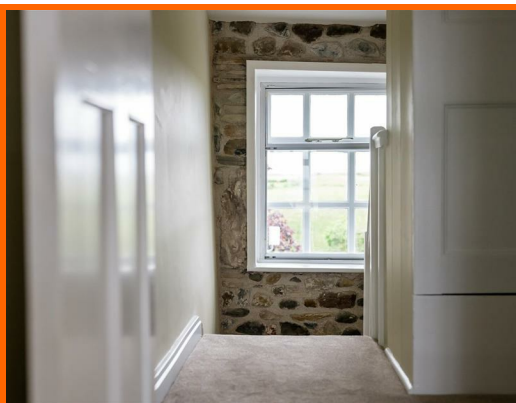
Double glazed window with secondary glazing, central heating radiator.

Rear External

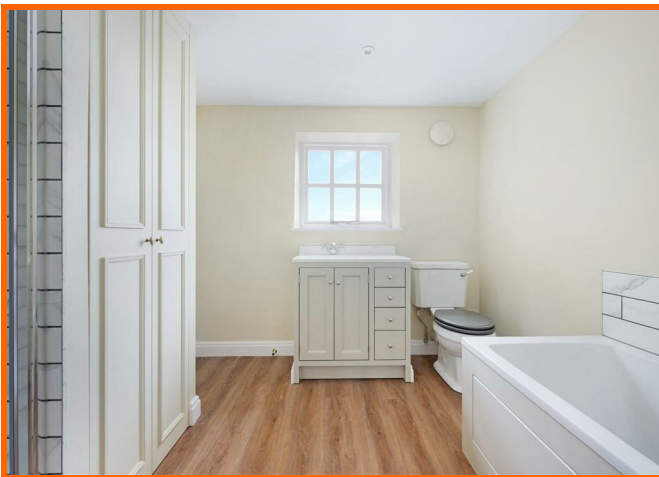
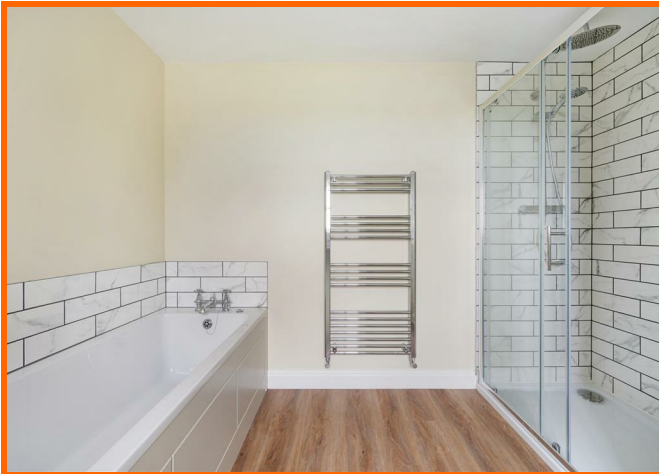
Yard, graveled area and lawn.

Viewing By Appointment Only

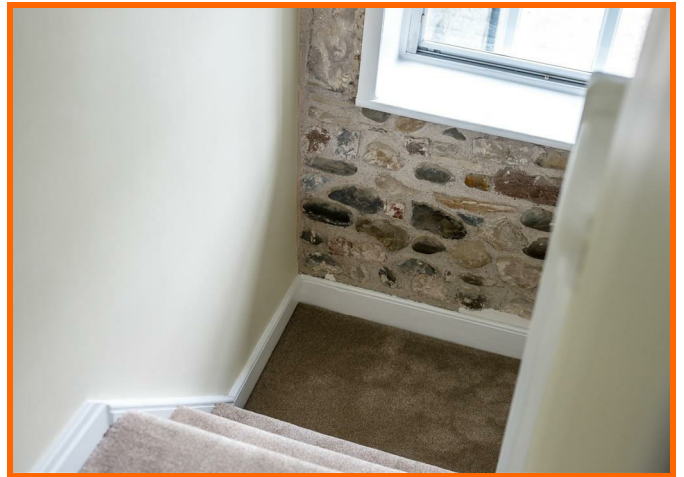
Please park at the end of the public highway and walk through the village.



17 Second Terrace, Sunderland Point, LA3 3HT



17 Second Terrace, Sunderland Point, LA3 3HT



Get in touch today

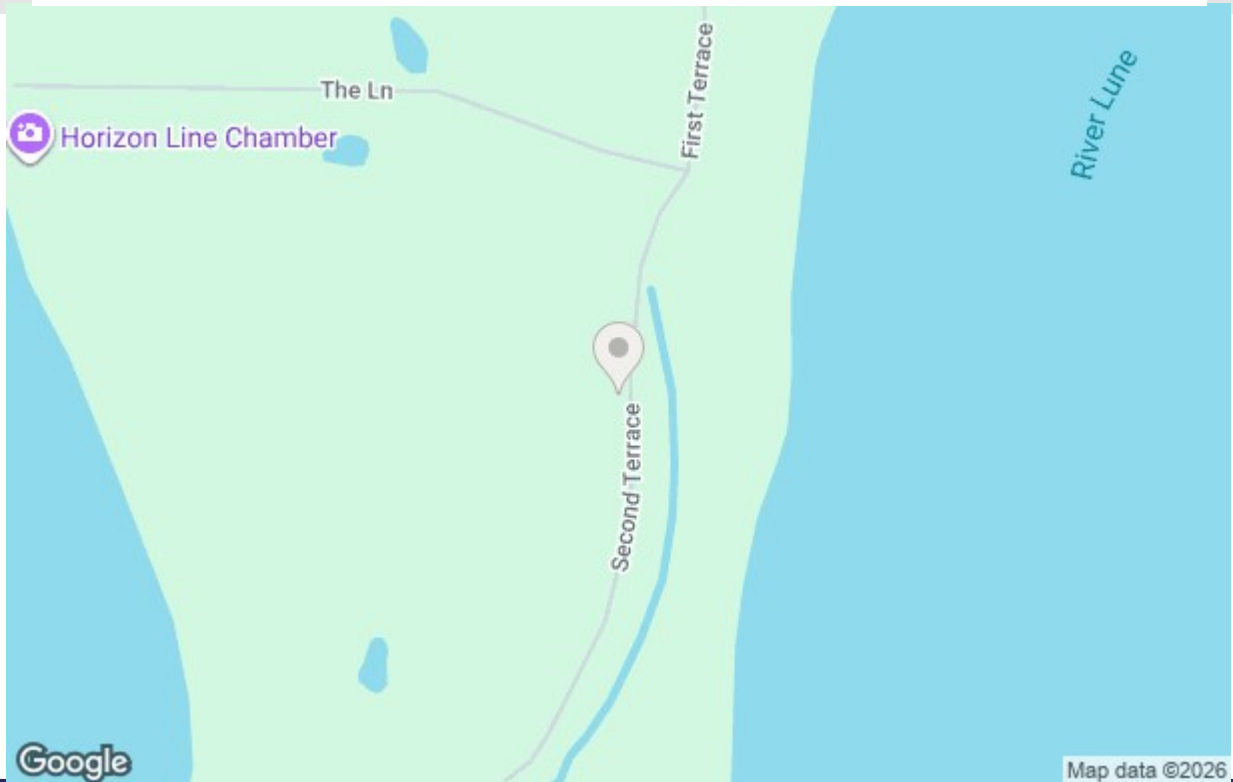
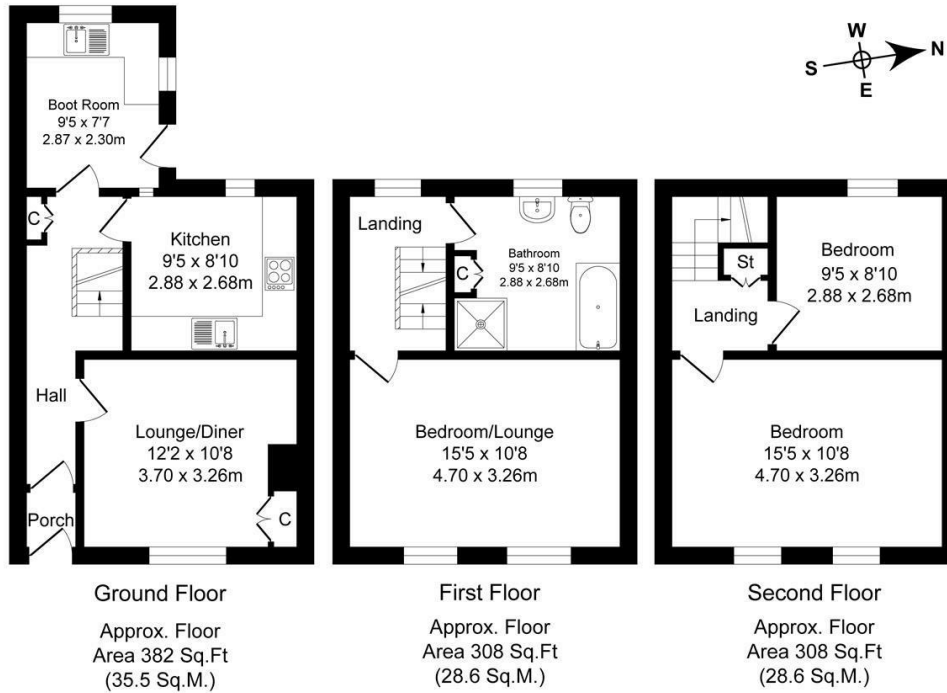
01524 401402
info@gfproperty.co.uk
gfproperty.co.uk

Take a nosey round

Second Terrace

Total Approx. Floor Area 998 Sq.ft. (92.7 Sq.M.)

Surveyed and drawn by Lens Media for illustrative purposes only. Not to scale. Whilst every attempt was made to ensure the accuracy of the floor plan, all measurements are approximate and no responsibility is taken for any error.



Get in touch today

01524 401402
info@gfproperty.co.uk
gfproperty.co.uk

Energy Efficiency Rating		Current	Potential
Very energy efficient - lower running costs			
(92 plus) A			
(81-91) B			
(65-80) C			
(55-68) D			
(39-54) E			
(21-38) F			
(1-20) G			
Not energy efficient - higher running costs			
England & Wales		EU Directive 2002/91/EC	

Environmental Impact (CO ₂) Rating		Current	Potential
Very environmentally friendly - lower CO ₂ emissions			
(92 plus) A			
(81-91) B			
(65-80) C			
(55-68) D			
(39-54) E			
(21-38) F			
(1-20) G			
Not environmentally friendly - higher CO ₂ emissions			
England & Wales		EU Directive 2002/91/EC	