



Flat 2, 2 Wellington Terrace,
Morecambe, Lancashire, LA4
5LW

Flat 2, 2 Wellington Terrace, , Morecambe

The property at a glance



- Well Presented First Floor Flat
- Good Size Double Bedroom
- Open Plan Kitchen Lounge
- Three Piece Bathroom Suite
- Double Glazing & Gas Central Heating
- Newly Recarpeted & Redecorated
- Close to Morecambe Town Centre

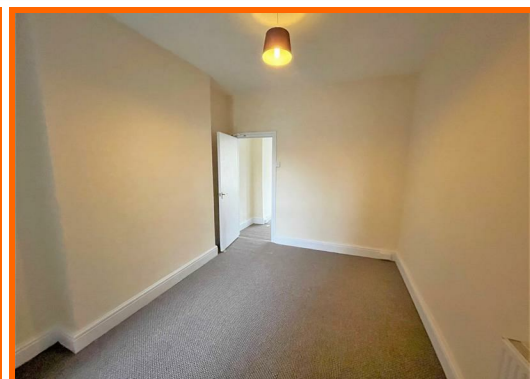
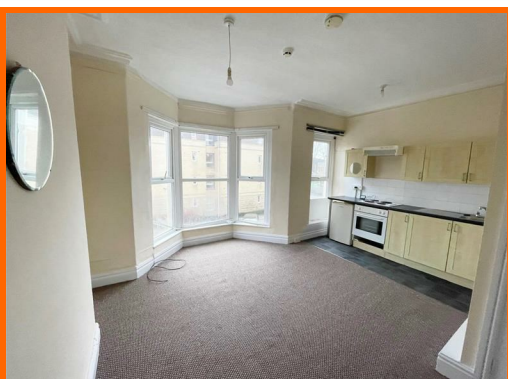


Get in touch today

01524 401402
info@gfproperty.co.uk
gfproperty.co.uk

£525

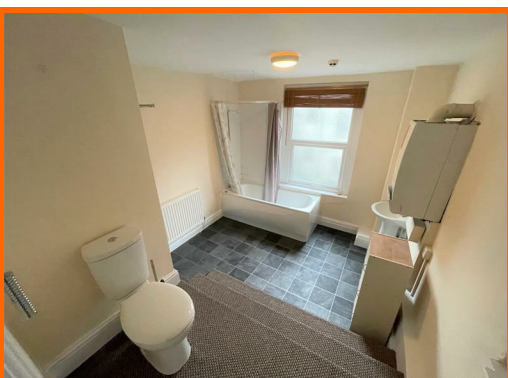
Get to know the property



Generously proportioned one bedroom, first floor flat situated in Morecambe, close to the town centre.

The accommodation briefly comprises open plan kitchen lounge kitchen with fitted kitchen with integrated oven and hob and bay fronted lounge. The bedroom is a good size double room and the bathroom offers a three piece suite comprising bath with wall mounted shower, low flush WC and wash hand basin. Further benefits to the property include double glazing and gas central heating throughout.

Positioned in a cul-de-sac location within easy reach of all local amenities including shops, cafes, schools and bus routes and within walking distance of the sea front. The area has benefited from the opening of 'The Bay Gateway', which now links the Morecambe and Heysham areas to the M6 motorway and areas further afield including the Lake District. Morecambe offers you the chance to enjoy the many pleasures of the seaside, whether it's flying kites, building sandcastles or enjoying the views across the bay!



**Flat 2, 2 Wellington
Terrace, Morecambe,
Lancashire, LA4 5LW**



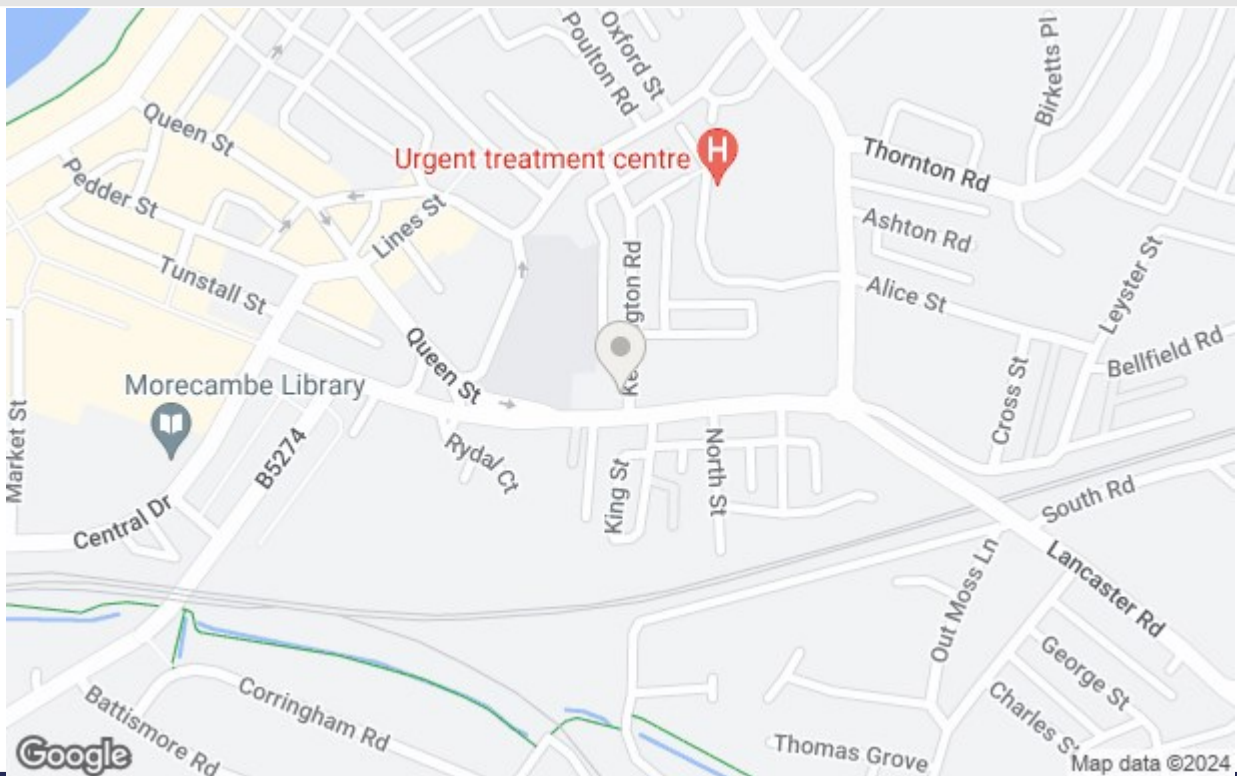
Get in touch today

01524 401402

info@gfproperty.co.uk

gfproperty.co.uk

Take a nosey round



Get in touch today

01524 401402
info@gfproperty.co.uk
gfproperty.co.uk

Energy Efficiency Rating		Current	Potential
Very energy efficient - lower running costs			
(92 plus) A			
(81-91) B			
(69-80) C			
(55-68) D			
(39-54) E			
(21-28) F			
(1-20) G			
Not energy efficient - higher running costs			
		68	79
England & Wales			

Environmental Impact (CO ₂) Rating		Current	Potential
Very environmentally friendly - lower CO ₂ emissions			
(92 plus) A			
(81-91) B			
(69-80) C			
(55-68) D			
(39-54) E			
(21-38) F			
(1-20) G			
Not environmentally friendly - higher CO ₂ emissions			
England & Wales			