



27, Hale Carr Lane, Heysham, Morecambe

# The property at a glance



- Two double bedrooms
- Fitted Kitchen
- Fitted Bathroom
- Seperate Toilet
- Private Driveway
- Spacious front and rear garden
- Available Now
- Good residential location

**R&B**  
ESTATE AGENTS

GET IN TOUCH TODAY  
01524 889000  
lancaster@rbestateagents.co.uk  
www.rbestateagents.co.uk

**£950**

# Get to know the property



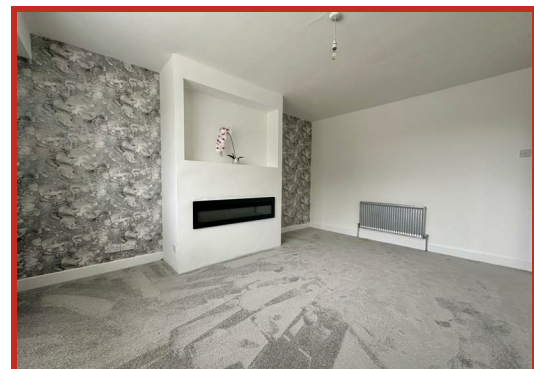
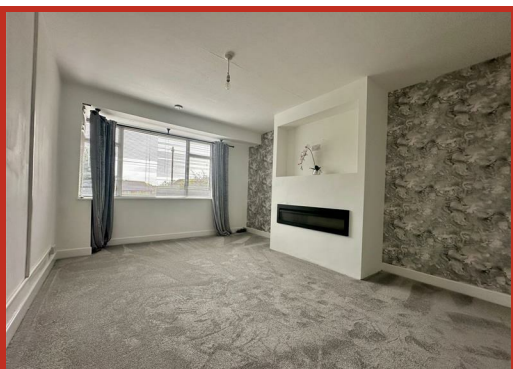
Welcome to this charming end terrace house located on Hale Carr Lane in the picturesque village of Heysham, Morecambe.

Upon entering, you are greeted by a cosy reception room, perfect for relaxing with family or entertaining guests. The property boasts two lovely bedrooms, offering ample space for a small family or those in need of a guest room or home office.

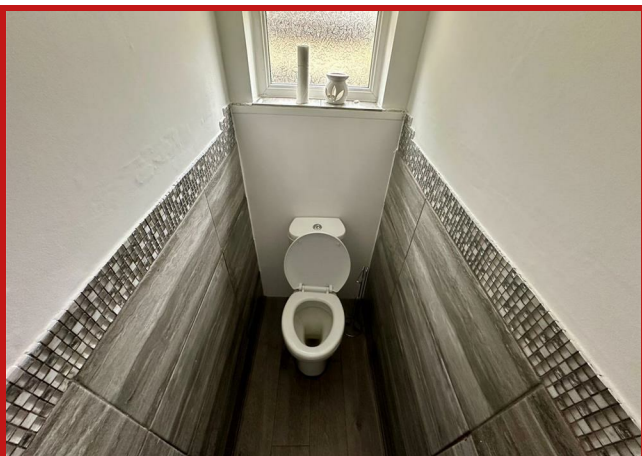
Additionally, the property features parking for two vehicles, ensuring convenience for homeowners with multiple cars or visitors.

Situated in a peaceful neighbourhood, this house offers a wonderful opportunity to enjoy the tranquillity of village life while still being within easy reach of local amenities and transport links.

Don't miss out on the chance to make this lovely house your new home in the heart of Heysham. Contact us today to arrange a viewing and experience the charm of Hale Carr Lane for yourself.



27 Hale Carr Lane, Heysham,  
Morecambe, LA3 2AE



GET IN TOUCH TODAY

01524 889000

[lancaster@rbestateagents.co.uk](mailto:lancaster@rbestateagents.co.uk)

[www.rbstateagents.co.uk](http://www.rbstateagents.co.uk)

# Take a nosey round



**GET IN TOUCH TODAY**  
 01524 889000  
 lancaster@rbestateagents.co.uk  
 www.rbestateagents.co.uk

Energy Efficiency Rating		Current	Potential
Very energy efficient - lower running costs			
(92 plus) A			83
(81-91) B			
(69-80) C			
(55-68) D		56	
(39-54) E			
(21-38) F			
(1-20) G			
Not energy efficient - higher running costs			
England & Wales		EU Directive 2002/91/EC	

Environmental Impact (CO <sub>2</sub> ) Rating		Current	Potential
Very environmentally friendly - lower CO <sub>2</sub> emissions			
(92 plus) A			83
(81-91) B			
(69-80) C			
(55-68) D			
(39-54) E			
(21-38) F			
(1-20) G			
Not environmentally friendly - higher CO <sub>2</sub> emissions			
England & Wales		EU Directive 2002/91/EC	