



R&B

15, Lancambe  
Court, Lancaster, LA1 5TG

15, Lancambe Court, , Lancaster

## The property at a glance

2  1  1 

- Over 55's Two bedroom apartment
- First floor apartment
- Desirable location
- Allocated parking
- Close to local amenities
- Spacious Lounge
- No Chain
- Leasehold - 999 Years from 1984, £50 pcm service charge
- Conncil taxband A
- EPC rating - C

**R&B**  
ESTATE AGENTS

GET IN TOUCH TODAY  
01524 889000  
[lancaster@rbestateagents.co.uk](mailto:lancaster@rbestateagents.co.uk)  
[www.rbestateagents.co.uk](http://www.rbestateagents.co.uk)

**£90,000**

# Get to know the property



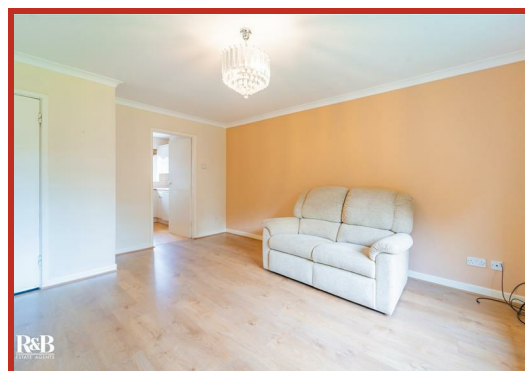
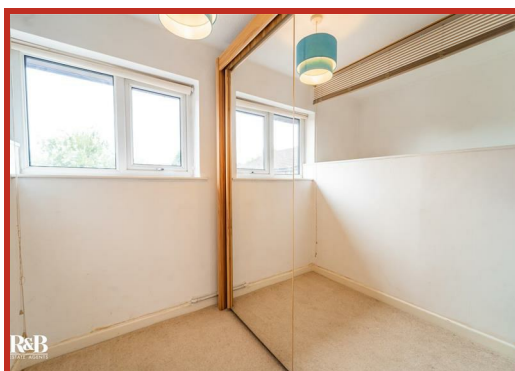
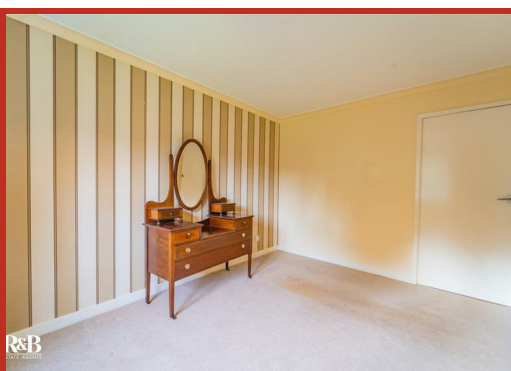
## LOVELY TWO BEDROOM APARTMENT FOR OVER 56'S

Nestled in the charming Lancambe Court in Lancaster, this delightful first floor flat is a gem waiting to be discovered. Boasting a cozy yet functional design, this property offers a spacious reception area, ideal for unwinding after a long day or hosting gatherings with friends and family.

The bedrooms exude comfort, providing a tranquil retreat for relaxation. The spacious reception room not only adds a touch of modernity but also creates a bright and airy ambiance throughout the apartment.

Residents will appreciate the shared outdoor area, perfect for enjoying the fresh Lancastrian air or mingling with neighbours in this friendly over 55's community.

Don't miss out on the opportunity to make this charming abode your own and experience the joys of comfortable living in a compact yet inviting space.





15 Lancambe Court, Lancaster,  
LA1 5TG



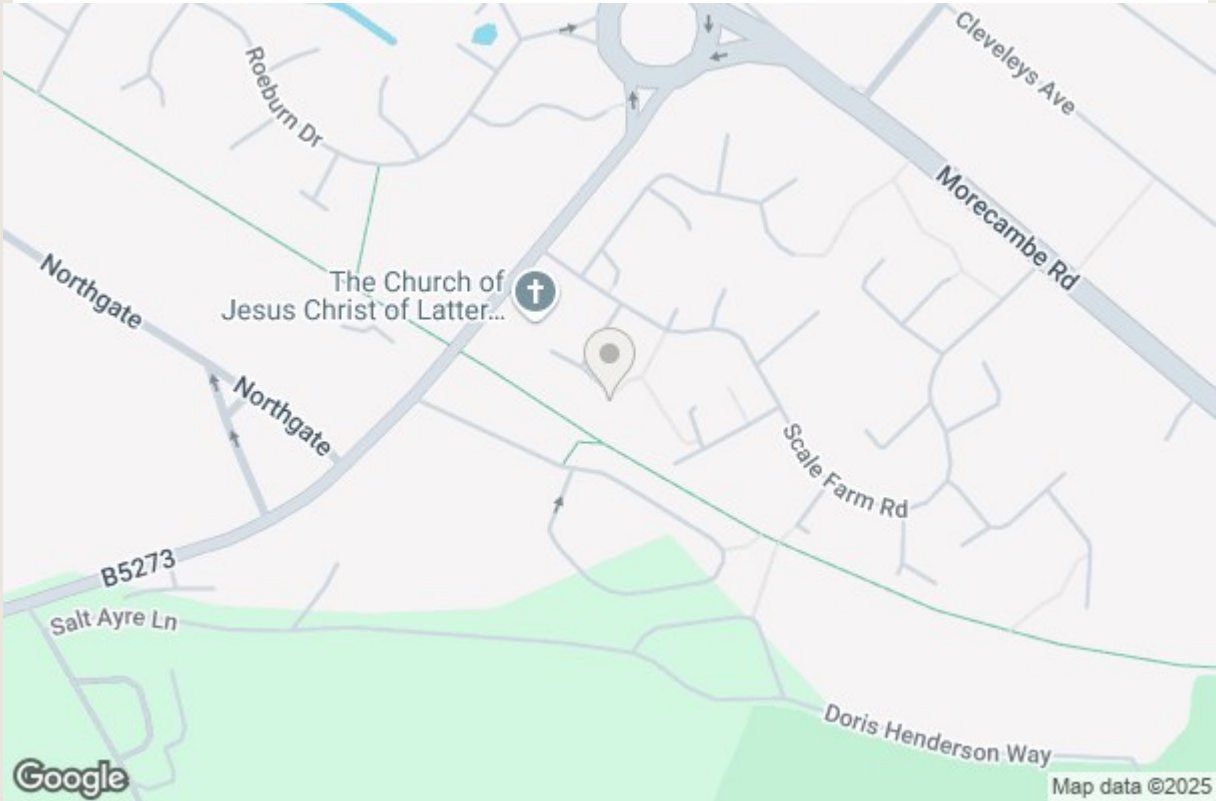
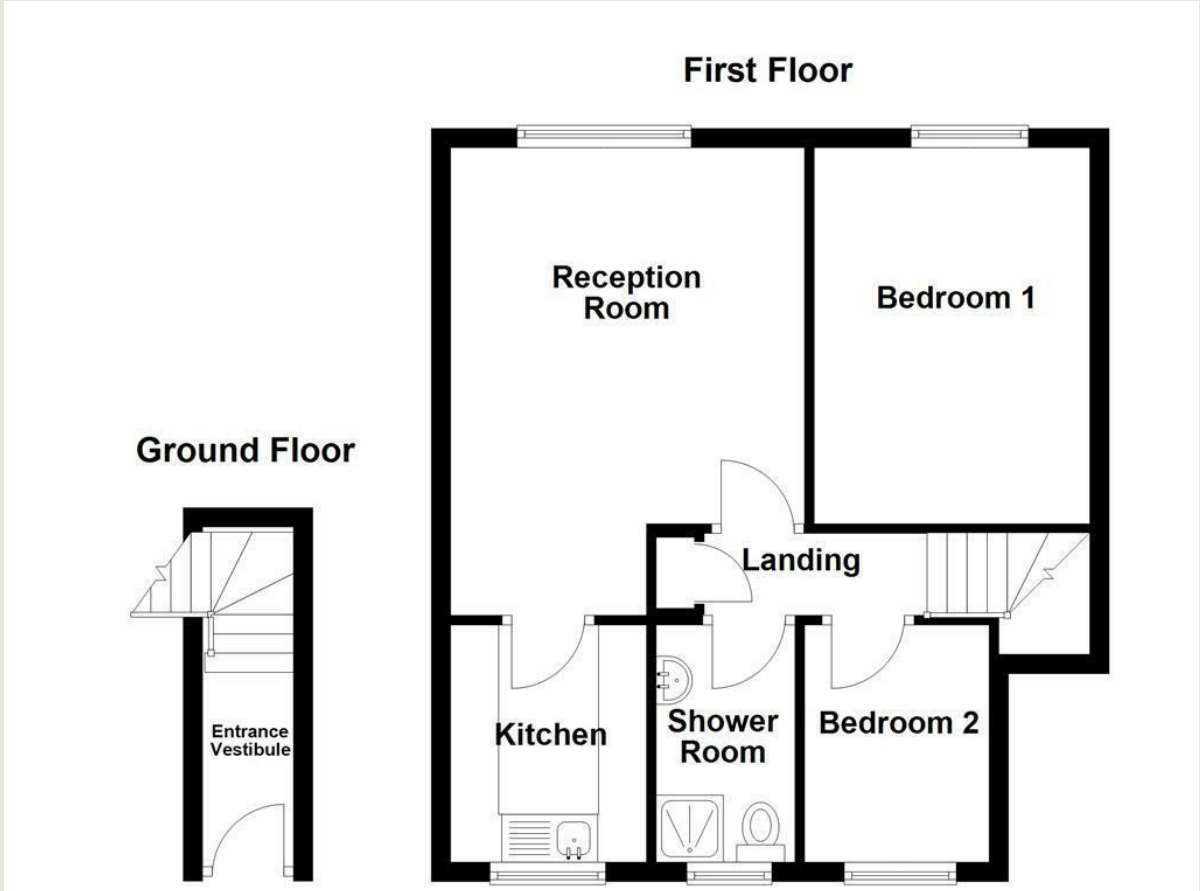
GET IN TOUCH TODAY

01524 889000

[lancaster@rbestateagents.co.uk](mailto:lancaster@rbestateagents.co.uk)

[www.rbstateagents.co.uk](http://www.rbstateagents.co.uk)

# Take a nosey round



Energy Efficiency Rating		
Very energy efficient - lower running costs		
(92 plus) <b>A</b>		
(81-91) <b>B</b>		
(69-80) <b>C</b>		
(55-68) <b>D</b>		
(39-54) <b>E</b>		
(21-38) <b>F</b>		
(1-20) <b>G</b>		
Not energy efficient - higher running costs		
England & Wales	EU Directive 2002/91/EC	

Environmental Impact (CO <sub>2</sub> ) Rating		
Very environmentally friendly - lower CO <sub>2</sub> emissions		
(92 plus) <b>A</b>		
(81-91) <b>B</b>		
(69-80) <b>C</b>		
(55-68) <b>D</b>		
(39-54) <b>E</b>		
(21-38) <b>F</b>		
(1-20) <b>G</b>		
Not environmentally friendly - higher CO <sub>2</sub> emissions		
England & Wales	EU Directive 2002/91/EC	