



4, Wagon Road,  
Dolphinhholme, Lancaster, LA2  
9BX

4, Wagon Road, Dolphinhholme, Lancaster

## The property at a glance 2 2 1

- Mid terrace traditional home
- Two bedrooms
- Two bathrooms
- Modern kitchen
- Original character features
- Idyllic peaceful location
- Parking
- Good transport links

**R&B**  
ESTATE AGENTS

GET IN TOUCH TODAY  
01524 889000  
lancaster@rbestateagents.co.uk  
www.rbstateagents.co.uk

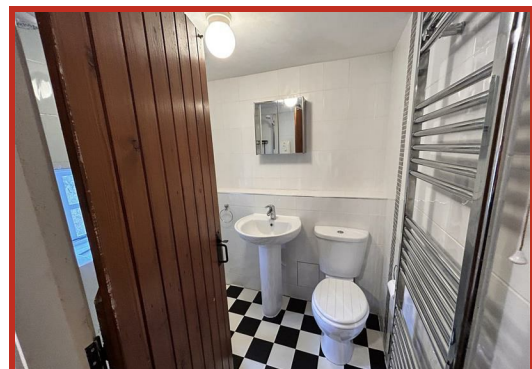
**£750**



# Get to know the property



Mid terrace four storey cottage comprising of two bedrooms, two bathrooms, kitchen/diner and lounge. Benefits include gas central heating and contemporary fixtures and fittings fused with traditional character features. The property is located in the idyllic village of Dolphinholme which is convenient for the M6 Motorway junction. Please see individual room descriptions for more information.



4 Wagon Road,  
Dolphinholme, Lancaster,  
Lancashire, LA2 9BX



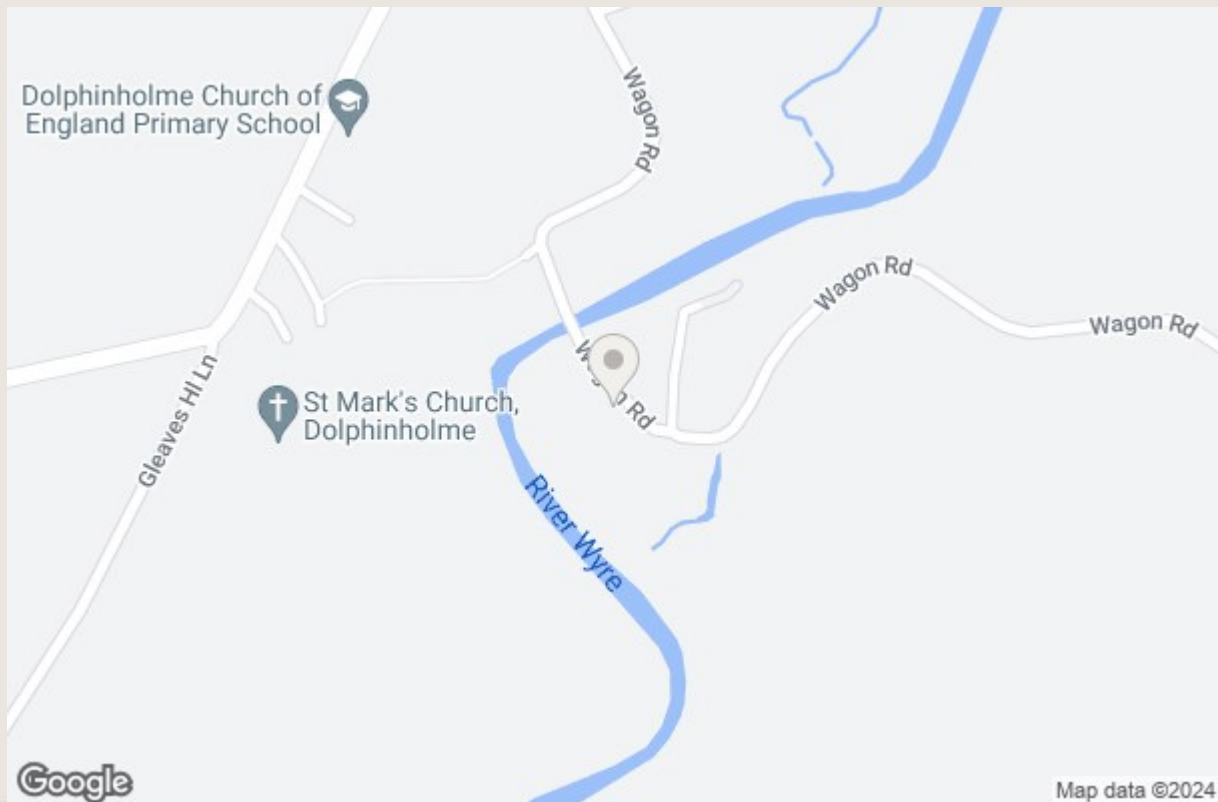
GET IN TOUCH TODAY

01524 889000

[lancaster@rbestateagents.co.uk](mailto:lancaster@rbestateagents.co.uk)

[www.rbstateagents.co.uk](http://www.rbstateagents.co.uk)

# Take a nosey round



**GET IN TOUCH TODAY**  
 01524 889000  
[lancaster@rbestateagents.co.uk](mailto:lancaster@rbestateagents.co.uk)  
[www.rbestateagents.co.uk](http://www.rbestateagents.co.uk)

Energy Efficiency Rating		Current	Potential
Very energy efficient - lower running costs			
(92 plus) <b>A</b>			
(81-91) <b>B</b>			
(69-80) <b>C</b>			
(55-68) <b>D</b>			
(39-54) <b>E</b>			
(21-38) <b>F</b>			
(1-20) <b>G</b>			
Not energy efficient - higher running costs			
<b>England &amp; Wales</b>		EU Directive 2002/91/EC	

Environmental Impact (CO <sub>2</sub> ) Rating		Current	Potential
Very environmentally friendly - lower CO <sub>2</sub> emissions			
(92 plus) <b>A</b>			
(81-91) <b>B</b>			
(69-80) <b>C</b>			
(55-68) <b>D</b>			
(39-54) <b>E</b>			
(21-38) <b>F</b>			
(1-20) <b>G</b>			
Not environmentally friendly - higher CO <sub>2</sub> emissions			
<b>England &amp; Wales</b>		EU Directive 2002/91/EC	