

oakheart



£240,000

Offers In Excess Of
Back Road, Tolleshunt D'arcy, Maldon

Nestled within the prestigious Guisnes Court, this exquisite one-bedroom top-floor apartment offers a rare opportunity to reside in a beautifully converted country mansion dating back to 1666. Located in the picturesque village of Tolleshunt D'Arcy, this exclusive residence is set within a secure gated community, providing both privacy and a sense of historic charm.

Stepping inside, the apartment immediately impresses with its spacious and well-proportioned layout, where period character

meets modern comfort. Large windows fill the rooms with natural light, highlighting the elegant features and creating a warm, inviting atmosphere. The generous living space is thoughtfully designed to maximise both style and functionality, offering ample room for relaxation and entertaining.

One of the standout features of this home is its private balcony, which extends the living space outdoors and provides the perfect setting to enjoy the breathtaking views over the meticulously

maintained 3.5-acre grounds. The tranquil surroundings offer a true sense of retreat, with lush greenery and mature trees enhancing the beauty of the estate.

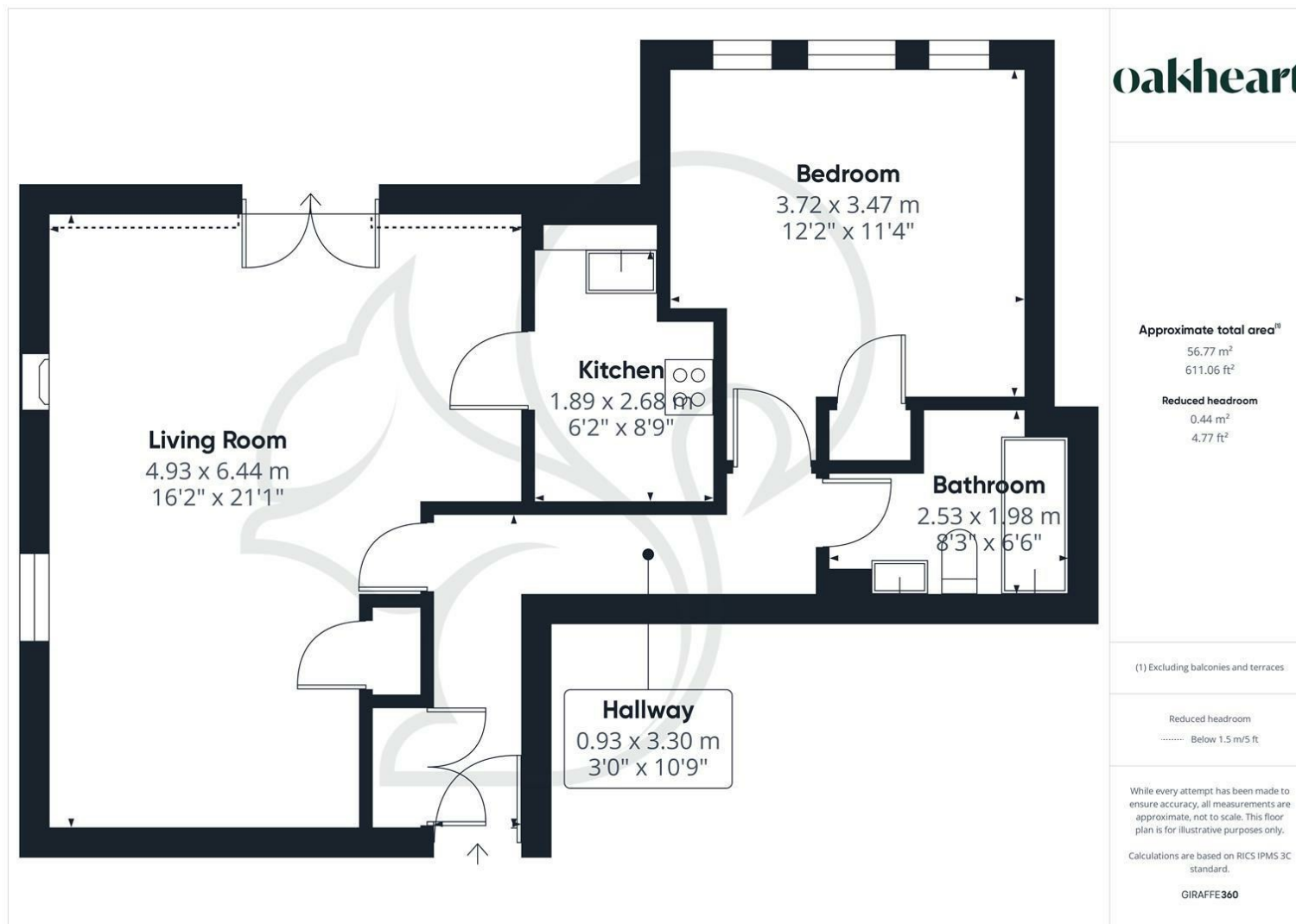
The bedroom is equally well-appointed, offering a peaceful sanctuary with scenic views, while the well-equipped kitchen and bathroom provide all the modern conveniences needed for comfortable living. The charm of the historic building is beautifully preserved, blending period elegance with contemporary living in a way that makes this apartment truly unique.












oakheart

Local Authority:
Maldon

Tenure:
Leasehold - Share of Freehold

Council Tax Band:
B

Energy Efficiency Rating

	Current	Potential
Very energy efficient - lower running costs		
(92 plus) A		
(81-91) B		
(69-80) C	71	76
(55-68) D		
(39-54) E		
(21-38) F		
(1-20) G		
Not energy efficient - higher running costs		
England & Wales	EU Directive 2002/91/EC 	

Agents Note: Whilst every care has been taken to prepare these particulars, they are for guidance purposes only. All measurements are approximate and are for general guidance purposes only and whilst every care has been taken to ensure their accuracy, they should not be relied upon.

Oakheart Mersea
01206 382191
mersea@oakheart.co.uk
34a Barfield Rd, West Mersea, Colchester, Essex, CO5 8QT

oakheart