

oakheart

£340,000

Asking Price

Spruce Close, West Mersea



Located in a peaceful cul-de-sac on Mersea Island, this two double bedroom detached bungalow offers a fantastic opportunity for those seeking a home to make their own. Situated on a generous plot with beautifully landscaped rear gardens, this property provides both space and potential.

The internal layout includes a spacious lounge, a fitted kitchen, and a conservatory that opens out to the rear garden—ideal for enjoying the views and natural light throughout the day. While the property would

benefit from some modernisation, it presents a blank canvas for buyers looking to add their own style and value.

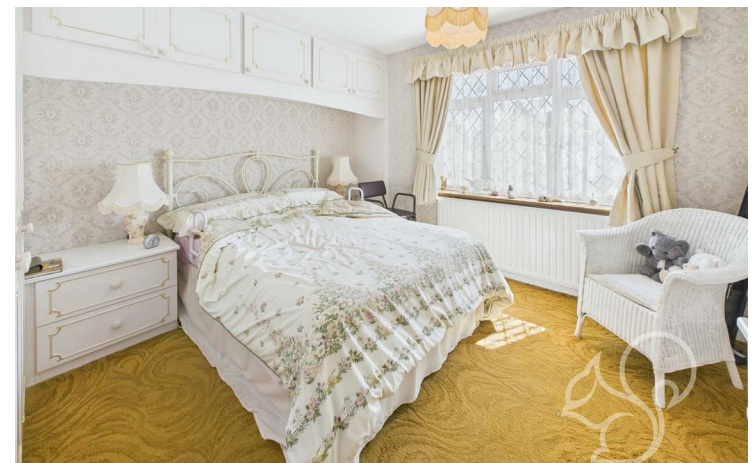
Both bedrooms are comfortable doubles, making the home suitable for couples, small families, or those downsizing. The family bathroom complete's the internal accommodation.

Externally, the well-maintained rear garden offers a peaceful retreat with established planting and patio areas, perfect for outdoor relaxation

or entertaining. The property also benefits from two garages—providing ample storage, workshop space or secure parking—and a driveway.

With its desirable location just a short distance from the beach, village shops, and amenities, Spruce Close is a rare opportunity to acquire a detached bungalow with scope to personalise in one of Mersea's sought-after residential spots.

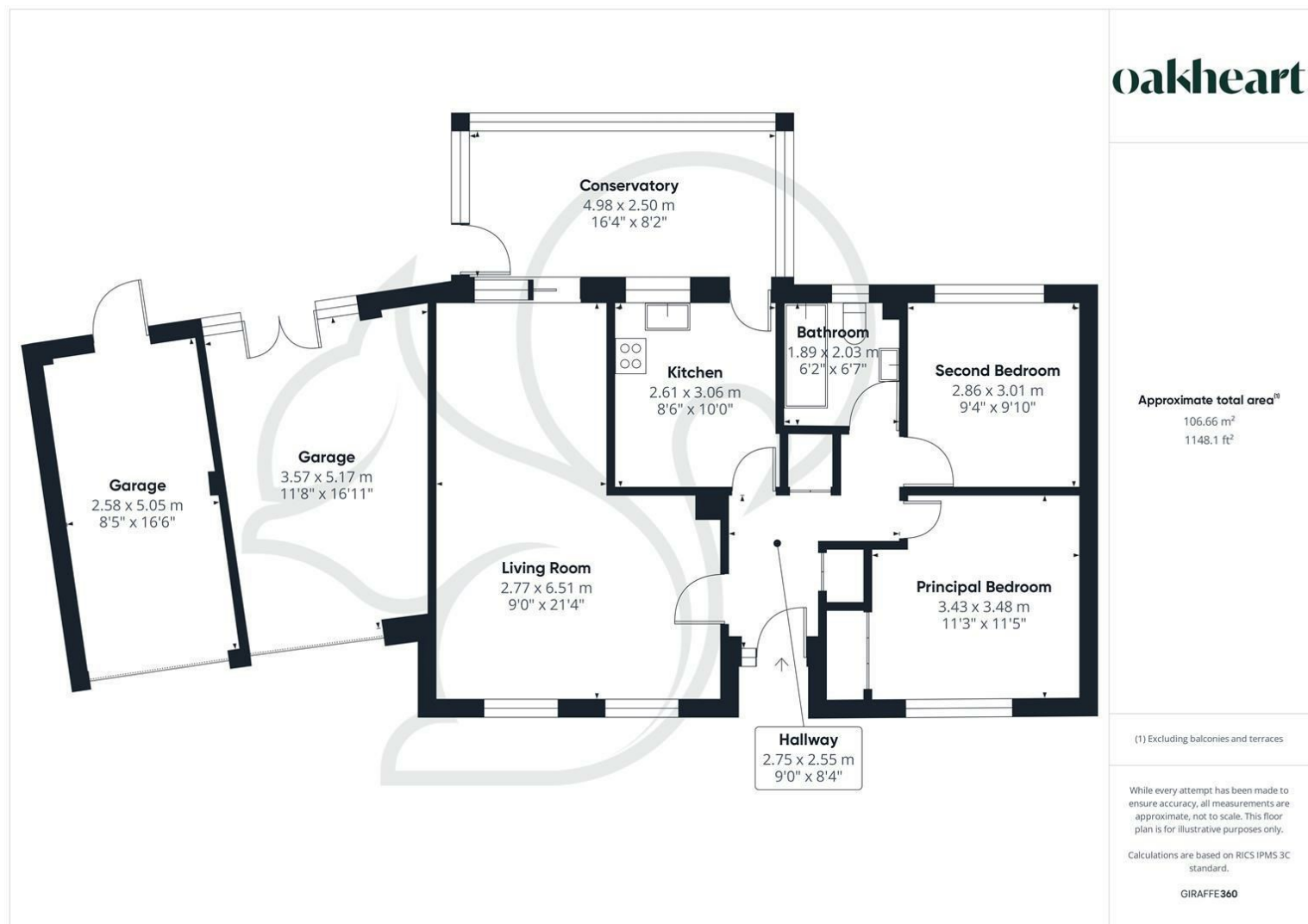
Please Call Oakheart Mersea Island For An Internal Inspection.











oakheart

Local Authority:
Colchester

Tenure:
Freehold

Council Tax Band:
D

Energy Efficiency Rating

	Current	Potential
<i>Very energy efficient - lower running costs</i>		
(92 plus) A		
(81-91) B		85
(69-80) C		
(55-68) D	55	
(39-54) E		
(21-38) F		
(1-20) G		
<i>Not energy efficient - higher running costs</i>		
England & Wales	EU Directive 2002/91/EC	

Agents Note: Whilst every care has been taken to prepare these particulars, they are for guidance purposes only. All measurements are approximate and are for general guidance purposes only and whilst every care has been taken to ensure their accuracy, they should not be relied upon.

Oakheart Mersea
01206 382191
mersea@oakheart.co.uk
34a Barfield Rd, West Mersea, Colchester, Essex, CO5 8QT

oakheart