

oakheart

£1,200,000

Asking Price

Meadow Lane, West Mersea





Nestled in the rarely available highly sought-after Meadow Lane in West Mersea, this exceptional five-bedroom detached home offers breathtaking sea views from every level. Perfectly positioned to capture the beauty of its coastal surroundings, the property boasts a thoughtfully designed layout that combines contemporary living with comfort and functionality.

Upon entering, you are welcomed into a spacious hallway that leads into the semi-open plan lounge and dining area, where large windows frame stunning sea views and flood the space with natural light. The design allows for a seamless flow between relaxation and

entertaining, creating a warm and inviting atmosphere. Additionally, sitting room and study provide the perfect retreats for quiet evenings or versatile family spaces. The well-equipped kitchen is designed with both practicality and style in mind, complemented by an adjacent utility room offering additional storage and workspace.

The first floor is home to three beautifully presented bedrooms, including a generous master suite complete with its own en-suite bathroom. The remaining two bedrooms on this level share a well-appointed family bathroom, ensuring comfort and convenience for all. As you ascend to the top floor, you will find two further

bedrooms, one of which benefits from an en-suite, making it ideal for guests or extended family. A charming seating area on the landing provides a tranquil spot to take in the uninterrupted panoramic sea views, making the most of this spectacular location.

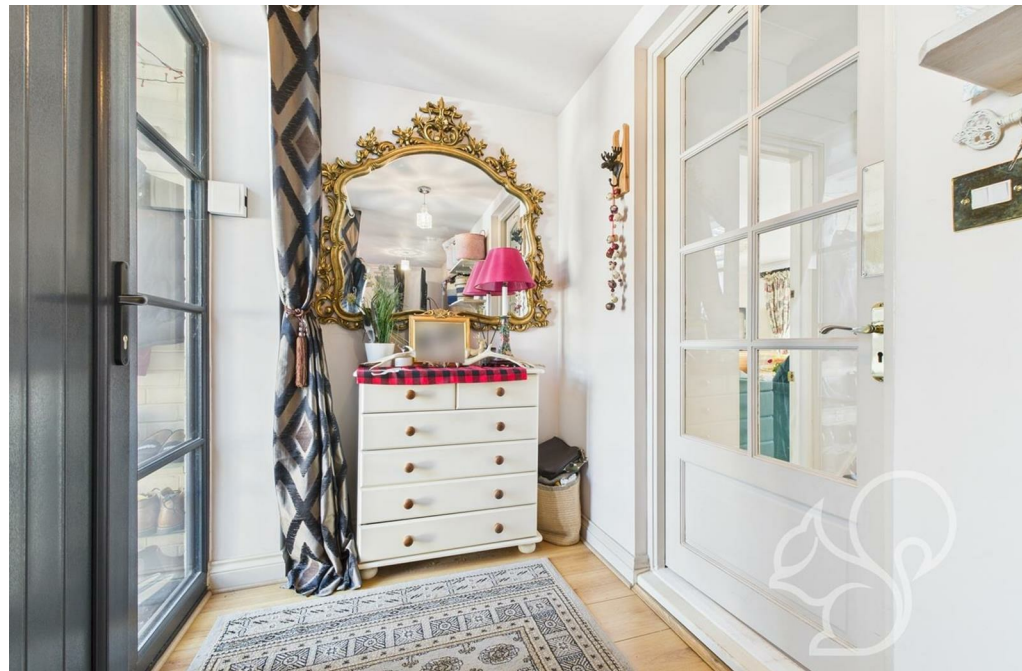
Outside, the south-facing garden is a true highlight, offering a private oasis bathed in sunlight throughout the day. A private footpath leads directly to the beach, allowing for easy access to the shoreline and the peaceful coastal lifestyle West Mersea is renowned for. With its stunning views, spacious accommodation, and enviable location, this remarkable home is a rare opportunity to enjoy the best of seaside living in one of the area's most desirable roads.

















GIRAFFE360