

oakheart



£415,000

Asking Price

Woodfield Drive, West Mersea,  
Colchester





Located in Woodfield Drive West Mersea, this charming two double bedroom detached bungalow is ideally situated in close proximity to the desirable Anchorage area of West Mersea. Positioned on a corner plot, the property offers significant development potential, subject to planning permission .

The bungalow is characterised by its immaculate presentation throughout, ensuring a move-in ready

condition for prospective buyers. The spacious kitchen, measuring 18'1" x 9'9", provides ample space for cooking and dining, making it a central hub of the home. The lounge, sized at 15'1" x 13'2", offers a comfortable and inviting space for relaxation and entertaining.

One of the standout features of this property is the generous conservatory, which measures 20'7" x 14'. This versatile space is flooded with natural light and

provides an additional area for relaxation, dining, or entertaining, seamlessly connecting the indoor and outdoor living spaces.

Overall, this property combines a prime location with well-appointed interiors and considerable potential for future development, making it a highly attractive property in West Mersea.

For an Internal Inspection Call Oakheart Mersea Island.







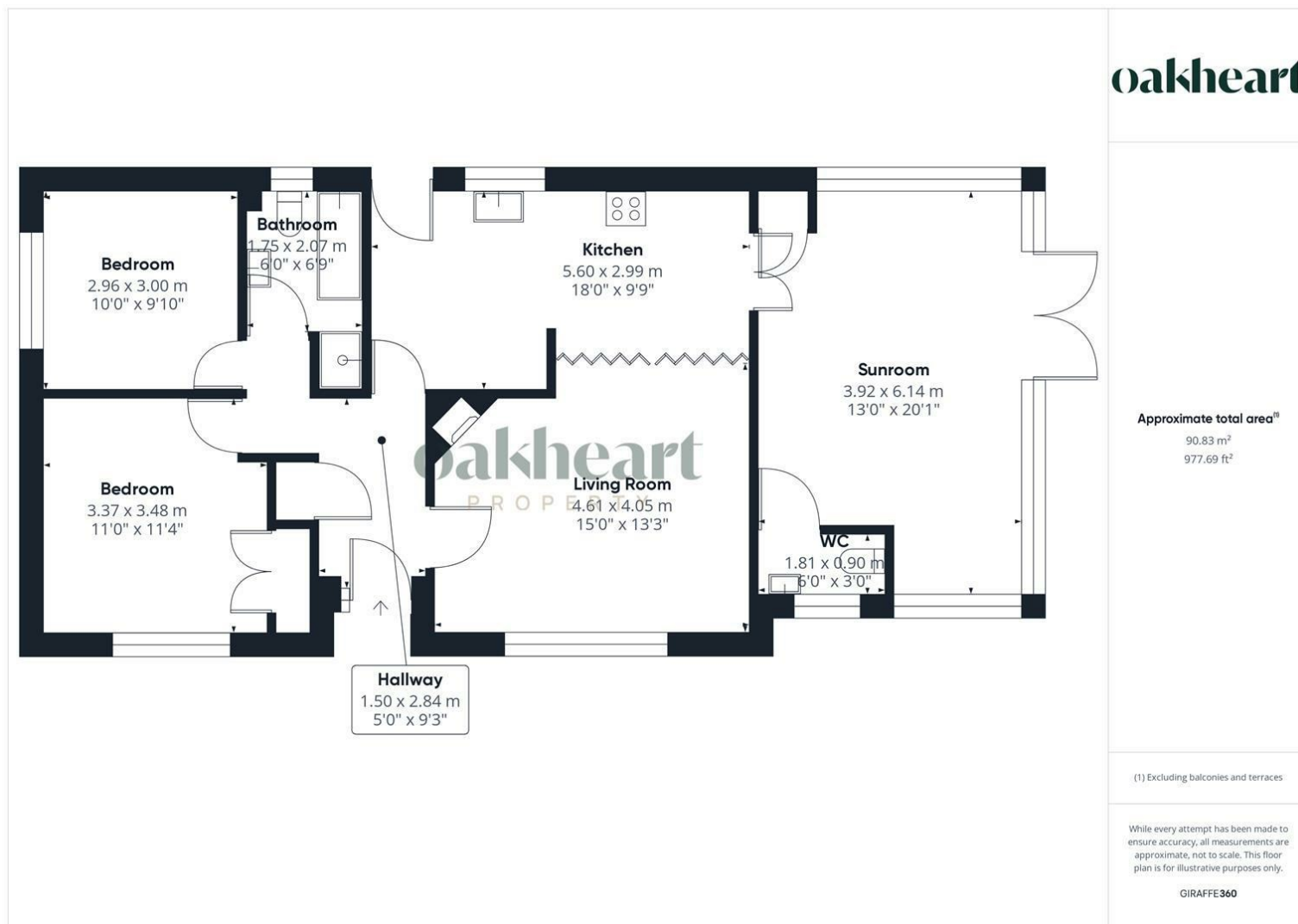












**Local Authority:**  
Colchester

**Tenure:**  
Freehold

**Council Tax Band:**  
D

### Energy Efficiency Rating

	Current	Potential
Very energy efficient - lower running costs		
(92 plus) <b>A</b>		
(81-91) <b>B</b>		<b>83</b>
(69-80) <b>C</b>	<b>66</b>	
(55-68) <b>D</b>		
(39-54) <b>E</b>		
(21-38) <b>F</b>		
(1-20) <b>G</b>		
Not energy efficient - higher running costs		
<b>England &amp; Wales</b>	EU Directive 2002/91/EC	

Agents Note: Whilst every care has been taken to prepare these particulars, they are for guidance purposes only. All measurements are approximate and are for general guidance purposes only and whilst every care has been taken to ensure their accuracy, they should not be relied upon.

Oakheart Mersea  
01206 382191  
mersea@oakheart.co.uk  
34a Barfield Rd, West Mersea, Colchester, Essex, CO5 8QT

**oakheart**