



Campion Close, Coventry, CV3 5EN

**SHELDON
BOSLEY
KNIGHT**

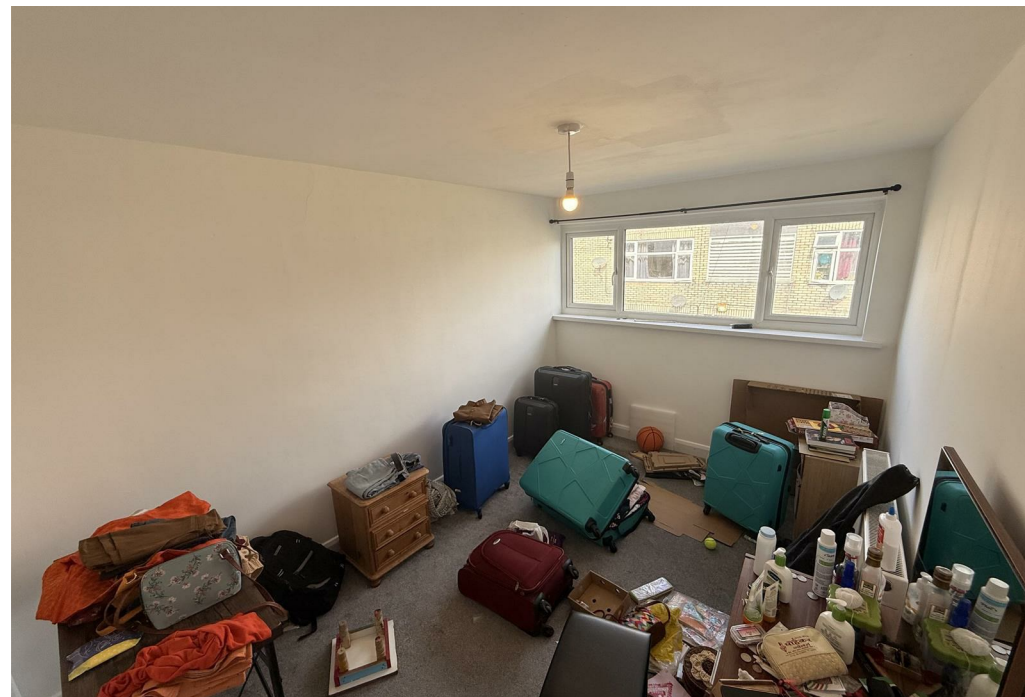
LAND AND
PROPERTY
PROFESSIONALS

Property Description

*** AVAILABLE NOW *** This well-presented four-bedroom terraced home is located in a quiet residential area of Binley, within easy reach of local shops, schools, and excellent transport links including the A46 and M69.

The ground floor comprises a welcoming entrance hallway, a spacious lounge, and a modern fitted kitchen/diner with access to the garden. Upstairs there are two double bedrooms, one single bedroom, and a contemporary family bathroom with bath, shower, W/C, and sink. Externally, the property benefits from a private rear garden and driveway parking. Offered UNFURNISHED. Council Tax Band B. Energy Rating C.







Key Features

- Available NOW
- Stivichall, Coventry
- 4 Bedrooms
- House
- Unfurnished
- Garden
- On Street Parking
- Council Tax Band D
- Energy Rating B

£1,200 PCM