



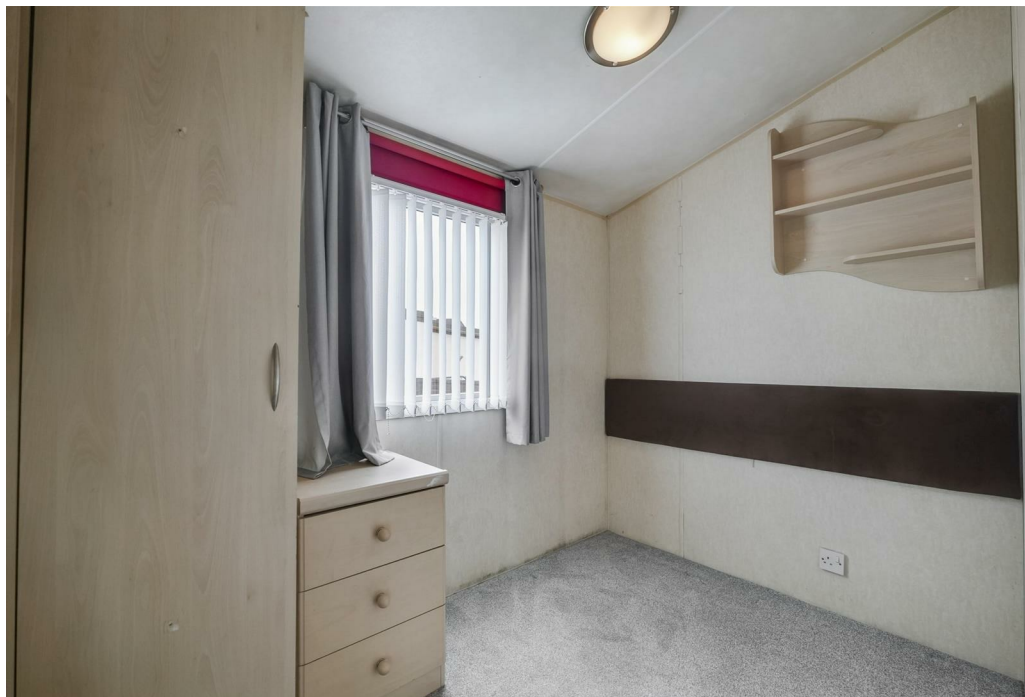
Elwy Circle, Coventry, CV7 9AU

Property Description

NO ONWARD CHAIN

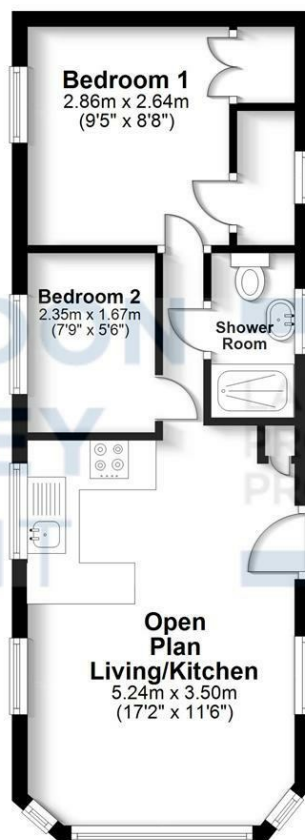
This is a two bedroom park home situated on Elwy Circle, Ash Green which is offered with no onwards chain. This a sought after dog friendly site with easy access to Coventry city. In brief this property comprises; Open plan kitchen/living space, shower room, and two bedrooms. the exterior has off road parking and garden space. With double glazed windows and gas central heating, please note services charges apply to this site. Call us now for more information. Council tax band A.





Ground Floor

Approx. 36.3 sq. metres (390.8 sq. feet)



Total area: approx. 36.3 sq. metres (390.8 sq. feet)

All efforts have been made to ensure the measurements are accurate on this floor plan, however these are for guidance purposes only.
Plan produced using PlanUp.

DISCLAIMER

All fixtures and fittings mentioned in these particulars are included in the sale, all others in the property are specifically excluded. Photographs are reproduced for general information and it must not be inferred that any item is included for sale with the property. These particulars are thought to be materially correct. Their accuracy is not guaranteed and they do not form part of any contract.

We routinely refer clients to both our recommended Legal Firm and a panel of Financial Services Providers. It is your decision whether you choose to deal with these companies. In making that decision, you should know that we receive a referral fee

Key Features

- Park Home
- Two Bedrooms
- No Onward Chain
- Off Road Parking
- Great Location
- Dog Friendly Site
- Service Charges Apply
- Council Tax Band A

£95,000

EPC Rating -

Tenure - Leasehold

Council Tax Band - A

Local Authority -
NBBC