



Middleborough Road, Coventry, CV1 4DE

**SHELDON
BOSLEY
KNIGHT**

LAND AND
PROPERTY
PROFESSIONALS

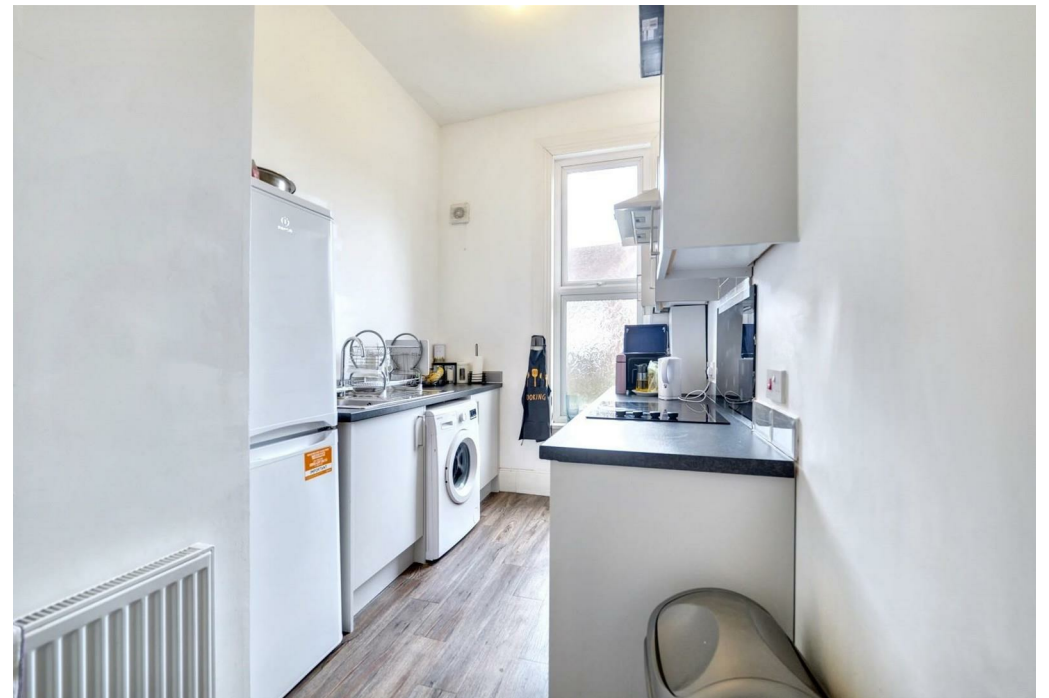
Property Description

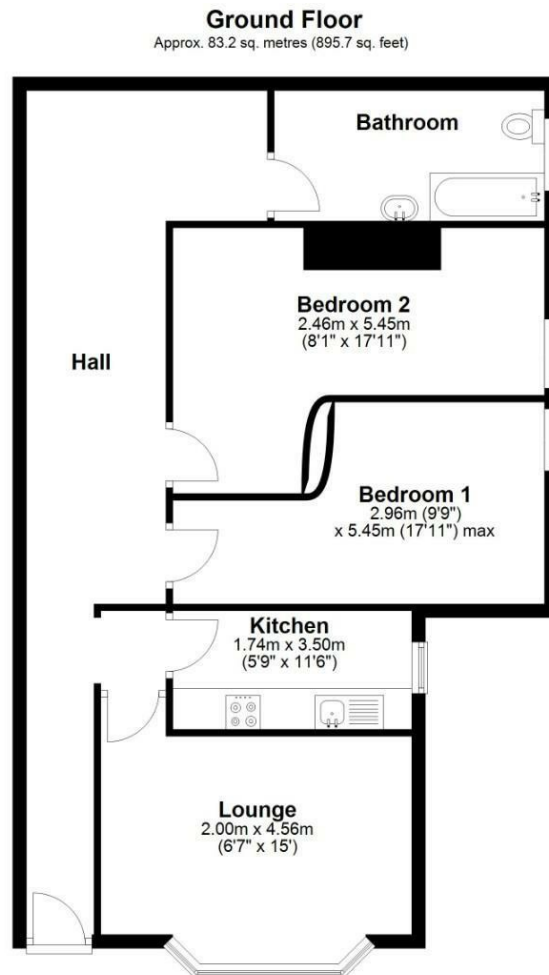
Sheldon Bosley Knight are proud and excited to welcome to the market this rare opportunity to acquire a fantastic rental investment. This property has six self contained flats all ranging in size and specification of two bedrooms, one bedroom and a bedsit. Current rental income in the region of £50,000 PA.

Middleborough Road is conveniently located close to the Coventry City centre and the train station.

Call us now for more information and to arrange a viewing.







Total area: approx. 83.2 sq. metres (895.7 sq. feet)

DISCLAIMER

All fixtures and fittings mentioned in these particulars are included in the sale, all others in the property are specifically excluded. Photographs are reproduced for general information and it must not be inferred that any item is included for sale with the property. These particulars are thought to be materially correct. Their accuracy is not guaranteed and they do not form part of any contract.

We routinely refer clients to both our recommended Legal Firm and a panel of Financial Services Providers. It is your decision whether you choose to deal with these companies. In making that decision, you should know that we receive a referral fee

Key Features

- Fantastic and Unique investment opportunity
- Six self contained flats set over three floors
- Mixture of one and bedroom apartments
- Rental Investment of approx £55,000 per annum
- Parking to the side
- Basement with further rental potential
- Call us now to arrange a viewing
- EPC - TBC

**Offers In Excess Of
£700,000**

EPC Rating -

Tenure - Freehold

Council Tax Band -

Local Authority -
Coventry City Council