



Middleborough Road, Coventry, CV1 4DE

**SHELDON
BOSLEY
KNIGHT**

LAND AND
PROPERTY
PROFESSIONALS

Property Description

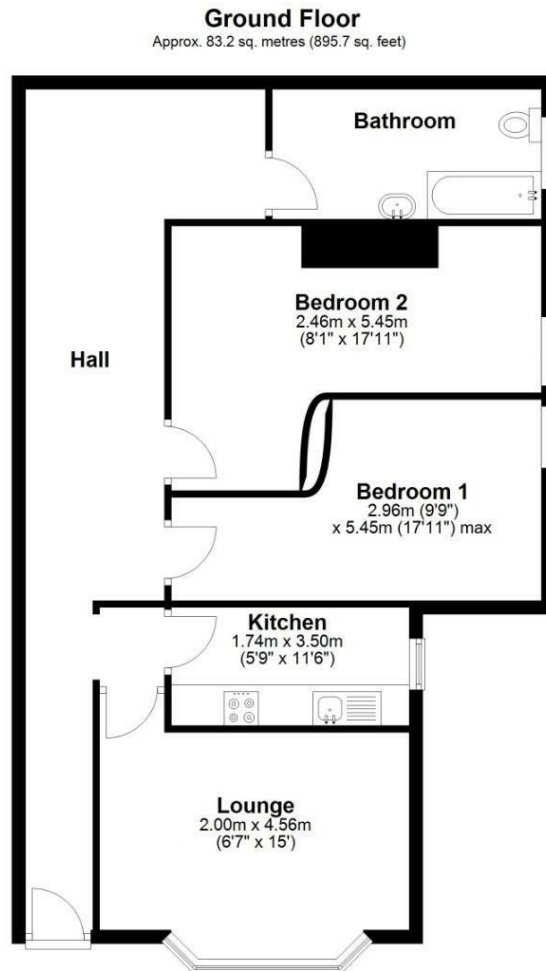
Sheldon Bosley Knight are proud and excited to welcome to the market this rare opportunity to acquire a fantastic rental investment. This property has six self contained flats all ranging in size and specification of two bedrooms, one bedroom and a bedsit. Current rental income in the region of £50,000 PA.

Middleborough Road is conveniently located close to the Coventry City centre and the train station.

Call us now for more information and to arrange a viewing.







Total area: approx. 83.2 sq. metres (895.7 sq. feet)

Key Features

- Fantastic and Unique investment opportunity
- Six self contained flats set over three floors
- Mixture of one and bedroom apartments
- Rental Investment of approx £55,000 per annum
- Parking to the side
- Basement with further rental potential
- Call us now to arrange a viewing
- EPC - TBC

**Offers In Excess Of
£700,000**

EPC Rating -

Tenure - Freehold

Council Tax Band -

Local Authority -
Coventry City Council

We routinely refer clients to both our recommended Legal Firm and a panel of Financial Services Providers. It is your decision whether you choose to deal with these companies. In making that decision, you should know that we receive a referral fee