



**Trentham Road, Coventry, CV1 5BD**

**SHELDON  
BOSLEY  
KNIGHT**

LAND AND  
PROPERTY  
PROFESSIONALS



# Property Description

A two bedroom mid terrace house with the following accommodation.  
Entrance hall, 22' Through lounge/dining room, 15' Kitchen  
There is also a lean-to to the rear.

On the first floor there are two good size bedrooms and the shower room/wc

Outside is a store to the rear of the garden

There are local shopping parades and schools in the local area as well as Coventry Canal.

The motorway network of M6, M69 are also within easy driving distance.





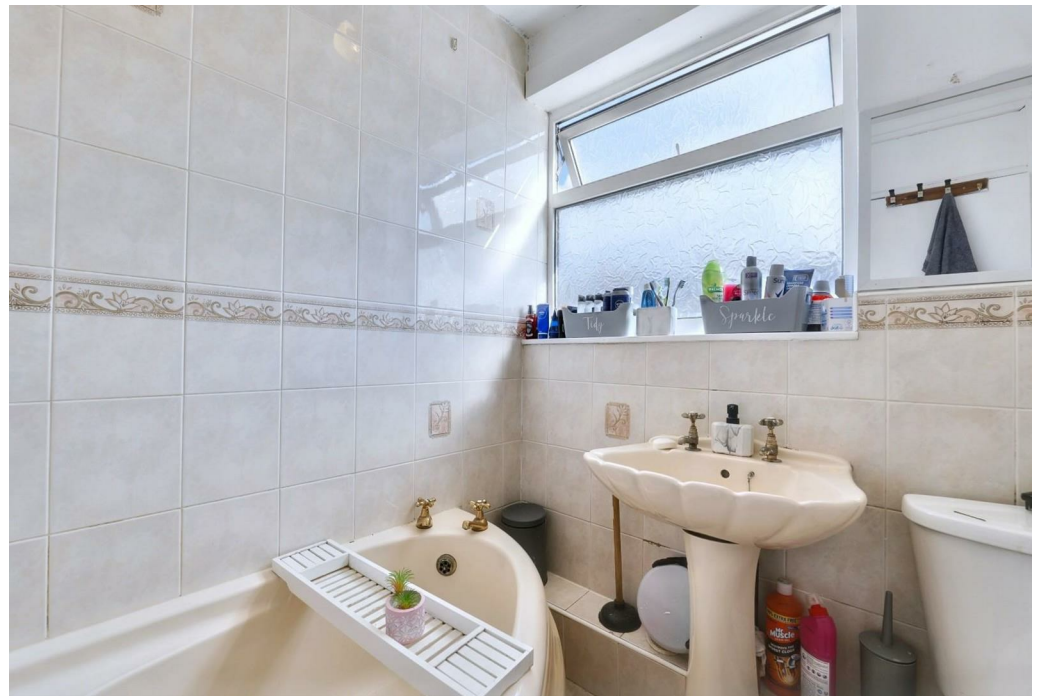
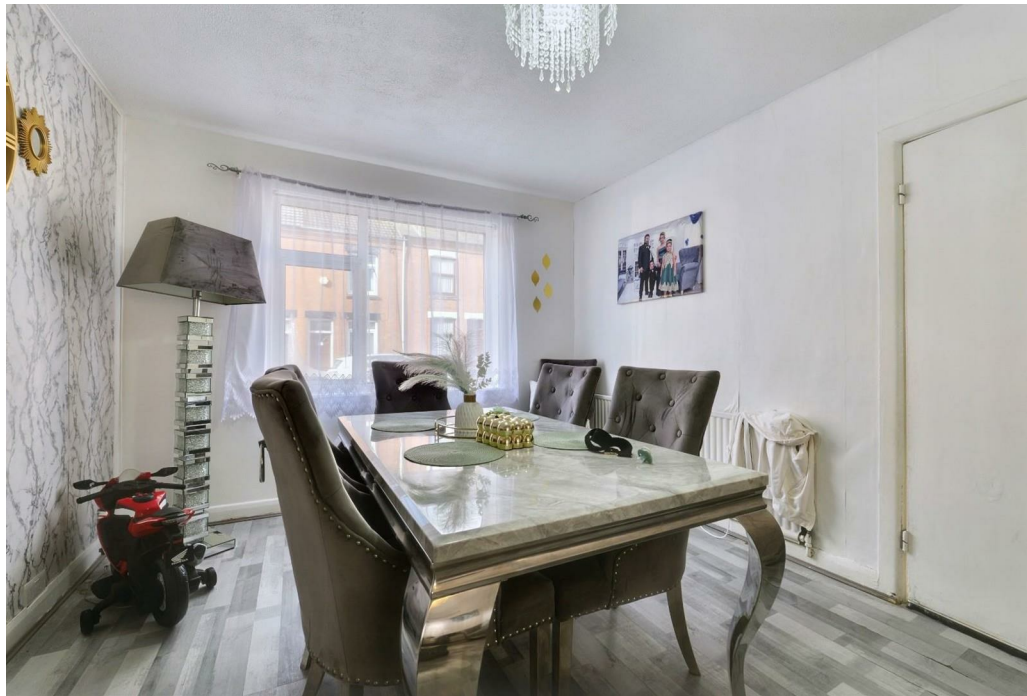


## Key Features

- 2 Bedrooms
- Mid Terrace
- 22' Through Lounge
- 15' Kitchen
- Shower Room/wc
- Garden Store
- CV1 Postcode
- City Centre is accessible

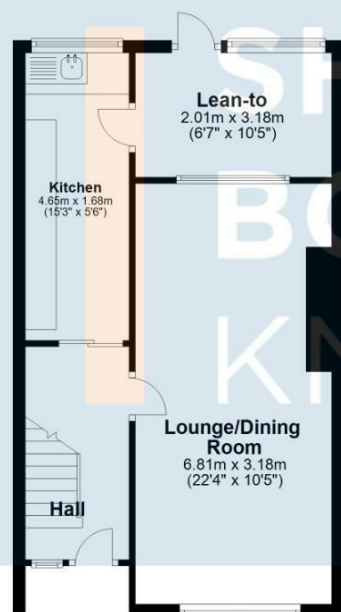
**£160,000**





### Ground Floor

Approx. 50.3 sq. metres (541.0 sq. feet)



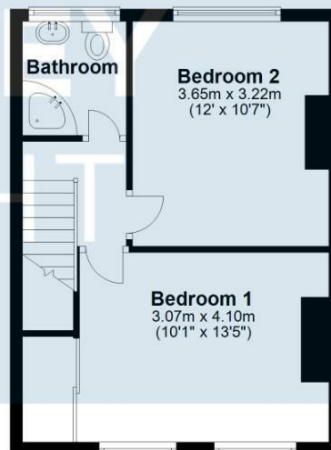
Lean-to  
2.01m x 3.18m  
(6'7" x 10'5")

Lounge/Dining  
Room  
6.81m x 3.18m  
(22'4" x 10'5")

Hall

### First Floor

Approx. 34.1 sq. metres (367.6 sq. feet)



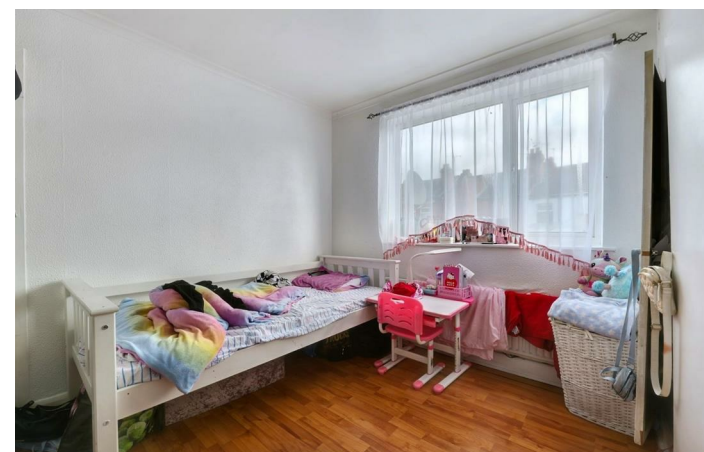
Bathroom

Bedroom 2  
3.65m x 3.22m  
(12' x 10'7")

Bedroom 1  
3.07m x 4.10m  
(10'1" x 13'5")

Total area: approx. 84.4 sq. metres (908.6 sq. feet)

All efforts have been made to ensure that the measurements on this floorplan are accurate however these are for guidance puposes only.  
Plan produced using PlanUp.



EPC Rating - C

Tenure - Freehold

Council Tax Band - A

Local Authority  
Coventry City Council





We routinely refer clients to both our recommended legal firm and a panel of financial services providers. It is your decision whether you choose to deal with these companies. In making that decision, you should know that we receive a referral fee.

**SHELDON  
BOSLEY  
KNIGHT**

LAND AND  
PROPERTY  
PROFESSIONALS