

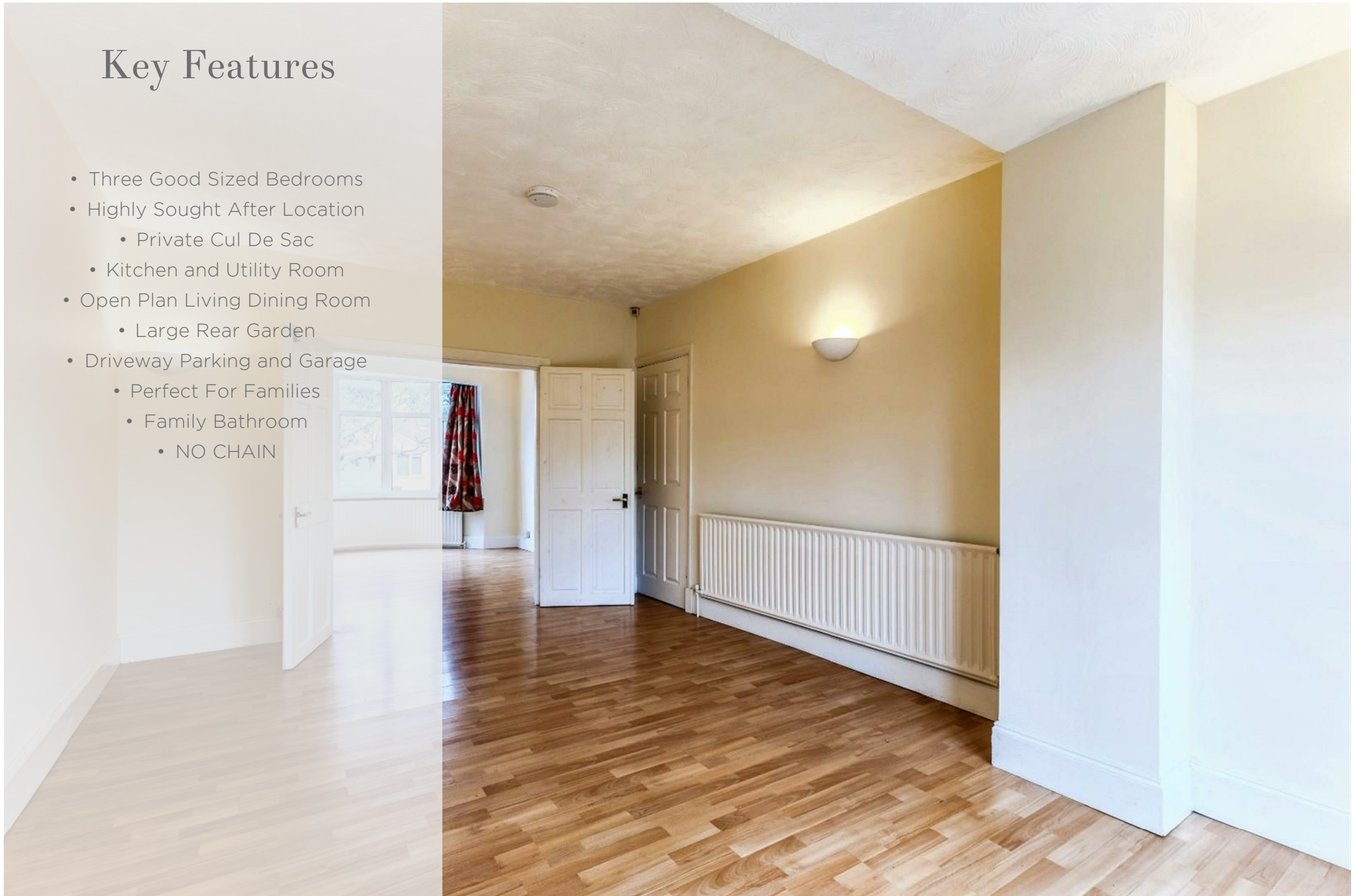


The Earls Croft Coventry CV3 5ES



Key Features

- Three Good Sized Bedrooms
- Highly Sought After Location
 - Private Cul De Sac
 - Kitchen and Utility Room
- Open Plan Living Dining Room
 - Large Rear Garden
- Driveway Parking and Garage
 - Perfect For Families
 - Family Bathroom
 - NO CHAIN





The Property

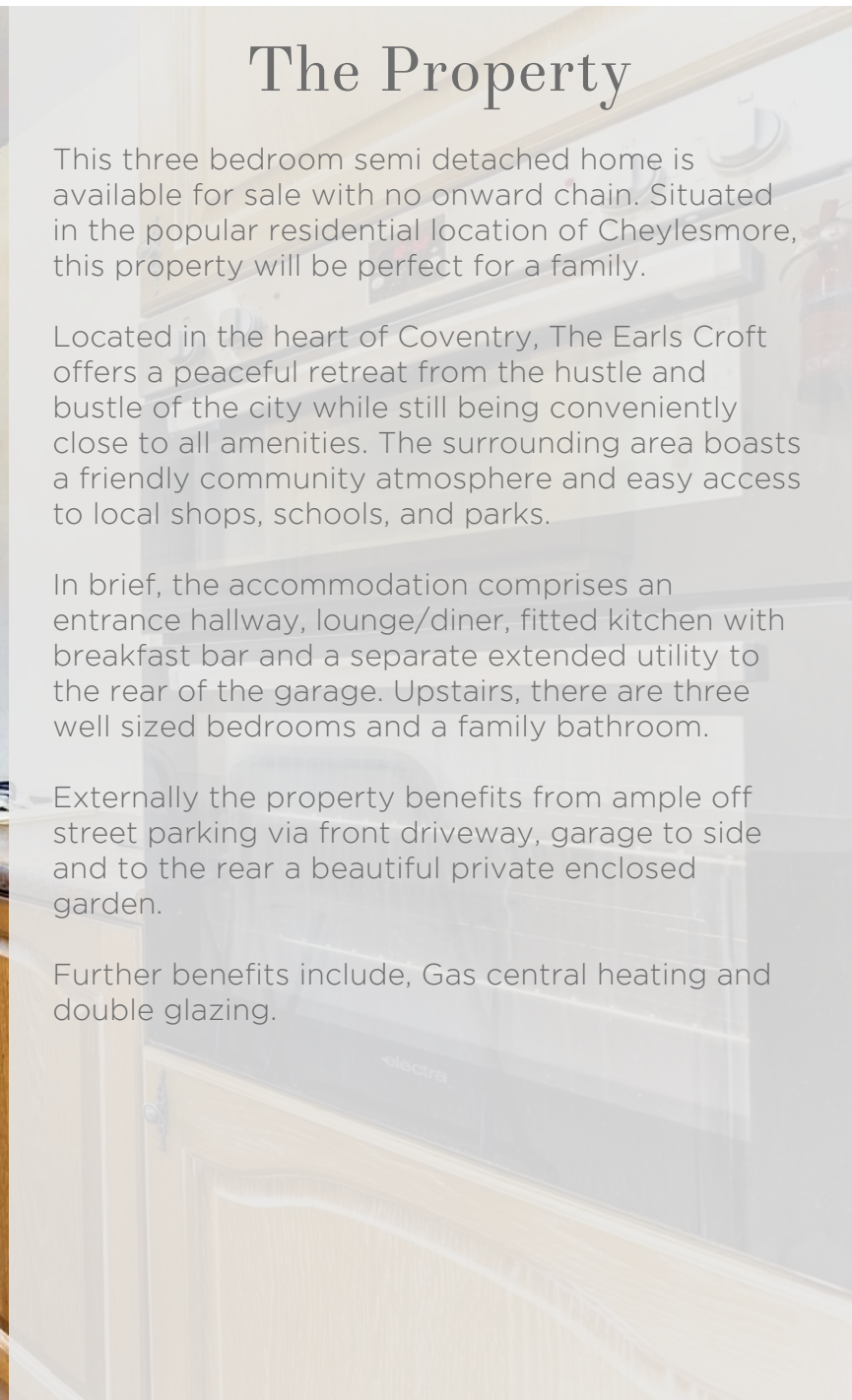
This three bedroom semi detached home is available for sale with no onward chain. Situated in the popular residential location of Cheylesmore, this property will be perfect for a family.

Located in the heart of Coventry, The Earls Croft offers a peaceful retreat from the hustle and bustle of the city while still being conveniently close to all amenities. The surrounding area boasts a friendly community atmosphere and easy access to local shops, schools, and parks.

In brief, the accommodation comprises an entrance hallway, lounge/diner, fitted kitchen with breakfast bar and a separate extended utility to the rear of the garage. Upstairs, there are three well sized bedrooms and a family bathroom.

Externally the property benefits from ample off street parking via front driveway, garage to side and to the rear a beautiful private enclosed garden.

Further benefits include, Gas central heating and double glazing.











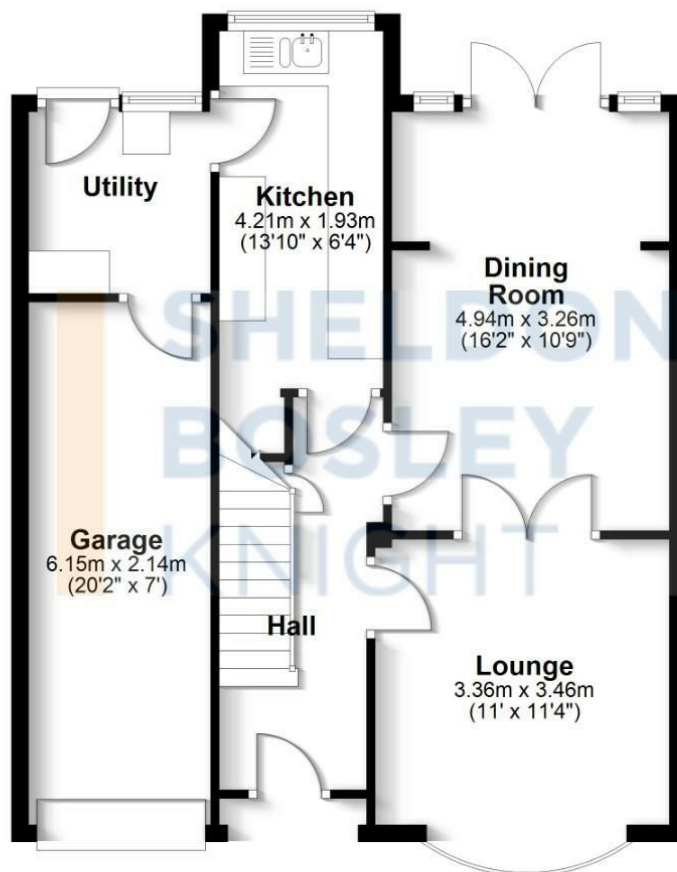




Floorplan

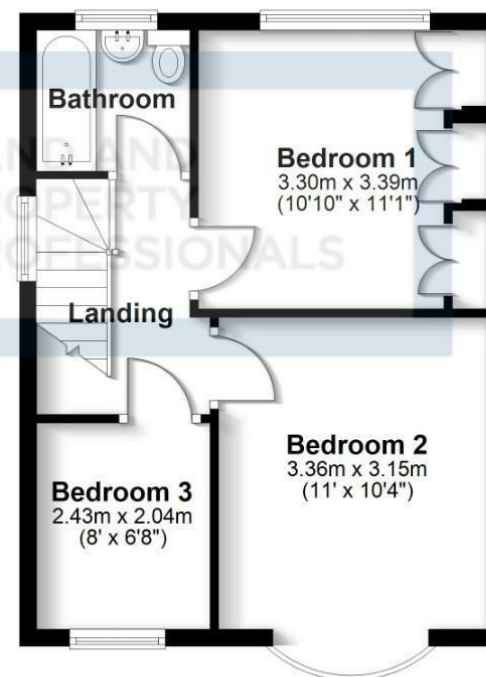
Ground Floor

Approx. 65.4 sq. metres (703.9 sq. feet)



First Floor

Approx. 36.9 sq. metres (396.8 sq. feet)



Total area: approx. 102.3 sq. metres (1100.7 sq. feet)



We routinely refer clients to both our recommended Legal Firm and a panel of Financial Services Providers. It is your decision whether you choose to deal with these companies. In making that decision, you should know that we receive a referral fee