



**Electric Wharf, Coventry, CV1 4JU**

**SHELDON  
BOSLEY  
KNIGHT**

LAND AND  
PROPERTY  
PROFESSIONALS



# Property Description

This two bedroom second floor apartment is available for sale with no upwards chain and offers a unique living experience.

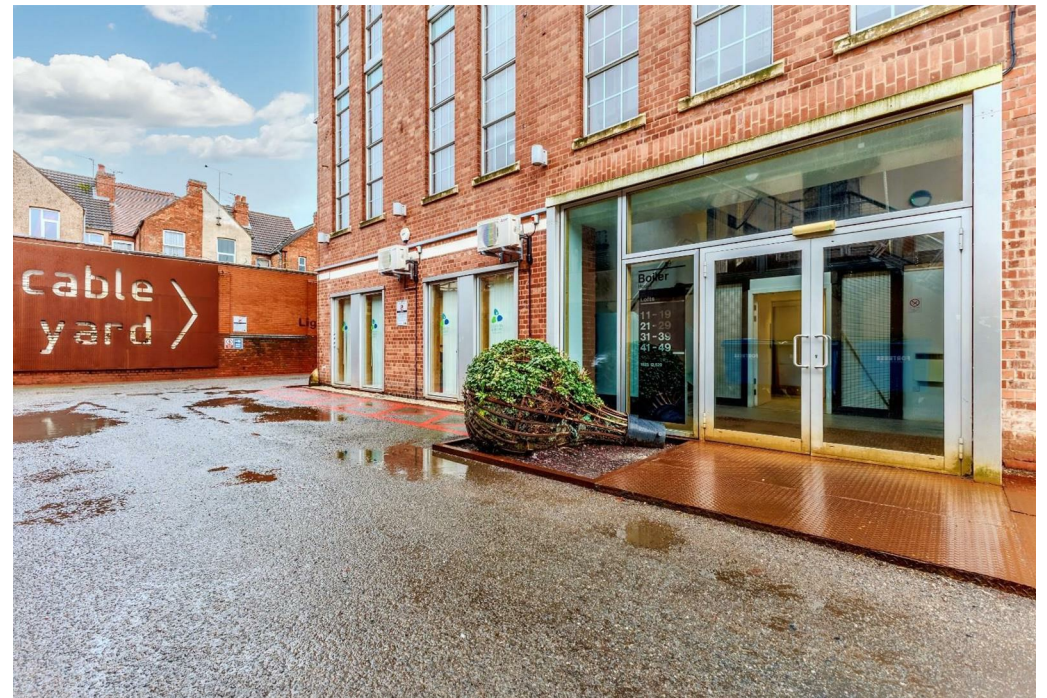
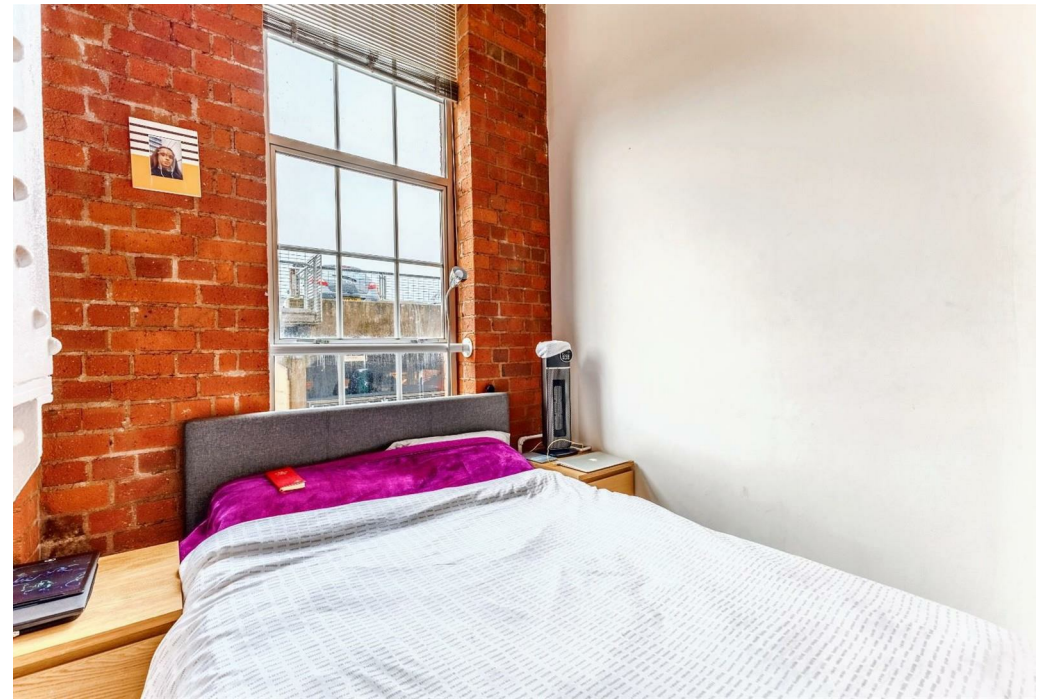
Electric Wharf is a popular development that is surrounded by local amenities and is just a brisk walk to the City Centre, making this a perfect opportunity for investors or couples seeking a blend of peaceful living and urban convenience.

In brief, the apartment comprises an open plan kitchen/diner/living area, as well as two bedrooms and a modern shower room.

Externally the property boasts secure residential parking and a clean open lobby, also benefitting from a lift.



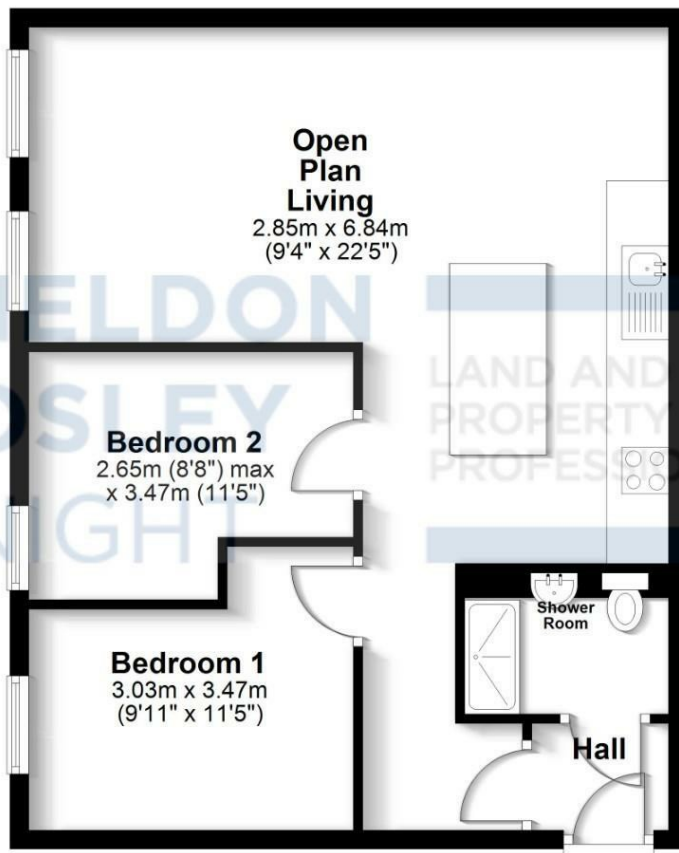






### Ground Floor

Approx. 58.7 sq. metres (632.1 sq. feet)



Total area: approx. 58.7 sq. metres (632.1 sq. feet)

## Key Features

- Two Bedrooms
- Second Floor Apartment
- Lift Service
- Long Lease
- Canal Side
- Secure Gated Parking
- Popular Development
- Perfect Location For City and University
- Transport Links Nearby
- Modern Urban Living

**£165,000**

EPC Rating - C

Tenure - Leasehold

Council Tax Band - B

Local Authority -  
Coventry City Council

We routinely refer clients to both our recommended Legal Firm and a panel of Financial Services Providers. It is your decision whether you choose to deal with these companies. In making that decision, you should know that we receive a referral fee